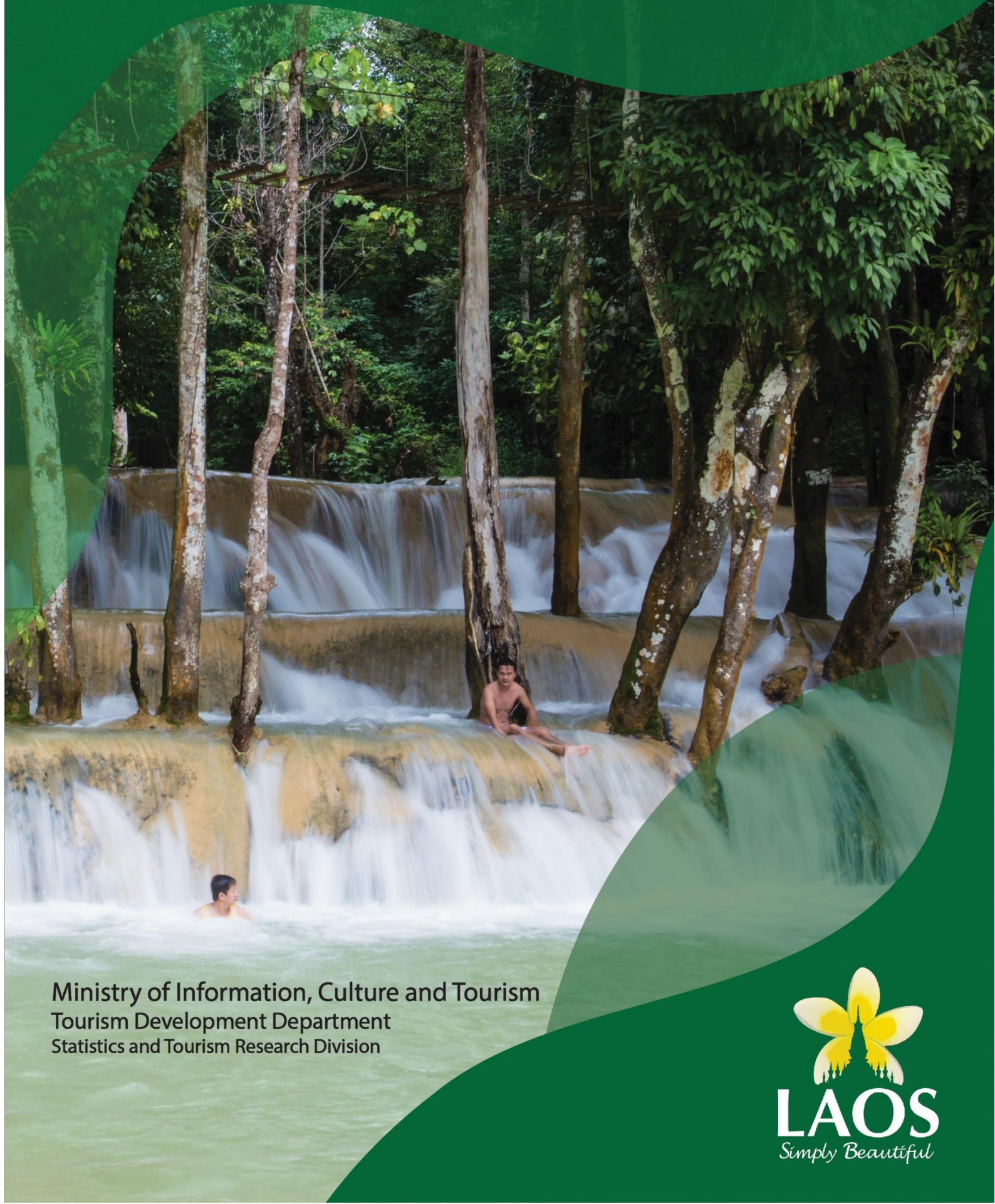


# Statistical Report On Tourism in Laos 2021



Ministry of Information, Culture and Tourism  
Tourism Development Department  
Statistics and Tourism Research Division





## ACKNOWLEDGEMENT

The Tourism Development Department (TDD), Ministry of Information, Culture and Tourism together with the Provincial Information, Culture and Tourism Department publishes annually tourism statistics relating to tourist arrivals, foreign exchange earnings from tourism, tourist expenditures, the average length of stay of tourists in Laos as well as tourist profiles, accommodation establishments and occupancy rates.

Due to the heavily outbreak of the COVID-19 in regional and international, Lao PDR has taken the measurement to close all the international checkpoints as a result there was no international arrivals in 2021. The purpose of this Statistical Report on Tourism is to provide the basic information for the relevant stakeholders/ parties to further research and study purposes since tourism is one of important sector that contribute to the Lao economy.

The Tourism Development Department would like to take this opportunity to express our gratitude to the following agencies: Provincial Tourism Division of Departments of Information, Culture and Tourism, the Lao Immigration Department, Wattay International Airport Authority, tour operators and agents as well as all types of the accommodation for their cooperation and their valuable assistance in the processing of statistical data and conducting statistical surveys.

On behalf of the tourism sector, I hope that the Lao Statistical Report on Tourism in 2021 will be useful and beneficial to all of you.



**Mrs. Phonemaly INTHAPHOME**  
Director General  
Tourism Development Department

## Contents

<b>ACKNOWLEDGEMENT</b> .....	i
<b>Background Information</b> .....	1
<b>Part I: Tourist Arrival Statistics 2021</b> .....	5
Table 1: Number of Tourist Arrivals, Revenue from Tourism, and Average Length of Stay from 1990-2021 .....	5
<b>Summary: Lao Tourism Situation in 2021</b> .....	6
<b>International and Regional Economic Situation</b> .....	7
<b>Lao Economy Trend</b> .....	8
Table 2: Tourist Arrivals to Laos by Region in 2021 .....	9
Table 3: Market Share of Tourist Arrivals by Region (%) in 2021 .....	9
Table 4: Tourist Arrivals Change over Previous Year (%) .....	9
Table 5: Number of Tourist Arrivals to Laos by Category from 2019-2021 .....	10
Table 6: Revenue Generating from Tourism 2020-2021 .....	10
Table 7: Tourist Arrivals to Laos by Nationality (Percent Increase) 2016-2021 .....	11
Table 8: Tourist Arrivals to Laos by Nationality (Market Share) 2017-2021 .....	12
Table 9: Tourist Arrivals to Laos by Month in 2021 .....	13
Table 10: Tourist Arrivals to Laos by Quarter from 2015-2021 .....	14
Table 11: Tourist Arrivals to Laos by Quarter from 2017-2021 .....	14
Table 12: Tourist Arrivals to Laos by Checkpoints 2017-2021 .....	15
Table 13: Tourist Arrivals to Laos through Checkpoints by Nationality in 2021 .....	16
Table 14: Tourism Arrivals to Laos by Province 2016-2021 .....	17
Table 15: Lao Outbound Tourism by Province from 2015-2021 .....	17
Table 16: Lao Outbound Tourism from 2018-2021 .....	18
Table 17: Domestic Tourism from 2016-2021 .....	19
<b>Domestic Tourism Situation in 2021</b> .....	19
<b>Lao Tourism Potential</b> .....	20
Table 18: Domestic Tourism Arrivals in Province by Month in 2021 .....	21
Graph 1: Number of Domestic Tourist Arrivals in 2021 .....	22
Graph 2: Number of Domestic Tourist Arrivals by Month in 2021 .....	22
Graph 3: Number of Domestic Tourist Arrivals by Province in 2021 .....	23
Graph 4: Number of Domestic Tourist Arrivals by Quarter in 2021 .....	23
Table 19: Income Generating from Tourism in 2021 .....	24
Graph 5: Increasing rate and Income rate from the Domestic Tourism .....	24
Table 20: Number of Hotels, Guesthouses, Resorts, Restaurants and Entertainment Establishments in 2021 .....	25
Table 21: Number of Accommodation Establishments, and Rooms 2017-2021 .....	25
Table 22: Number of Hotels, Guesthouses, Resort, Rooms, and Beds, in 2021 .....	26
Table 23: Occupancy Rate in each Province From 2014 - 2021 .....	26
Table 24: Tourist Arrivals to Luang Prabang Province from 2017-2021 .....	27
<b>Part II: Domestic Visitor Survey</b> .....	28
Table 25: Characteristics of Domestic Tourist Arrivals to Laos from 2020-2021 .....	29

<b>Part III: Tourism Statistics Projections</b> .....	31
Table 26: Number of Tourist Arrivals, Revenue from Tourism, Average Length of Stay from 2022-2025.....	31
Table 27: International Tourist Arrivals Forecast by Month from 2022-2025.....	32
Table 28: Number of Tour Operators in Lao PDR from 2017-2021.....	33
Table 29: Number of Tourist Attractions/ Sites in Laos in 2021.....	33
Table 30: Domestic Tourism Arrivals by Mode of Transportation and Purposes of the Visiting from 2020-2021.....	34
Table 31: Number of Homestay in Lao PDR in 2021.....	34
Table 32: Revenue from Tourism and Major Exports, 2017-2022.....	35
Table 33: Forecasting of Domestic Tourist Arrivals, Income and the Average Length of Stay from 2022-2025.....	35
<b>Part IV: Domestic Tourism Characteristics Survey</b> .....	36
Table 34: Domestic Tourism Characteristics.....	37
<b>Employment in Tourism Sector</b> .....	39
<b>Ministry of Information, Culture and Tourism</b> .....	40

## Background Information

This section includes background information on the statistical data contained in this report and on how they were obtained.

### Categories of Foreign Visitors

Foreign visitors to Laos are grouped into two categories: **international tourists and regional tourists**.

**International tourists** are those tourists who enter Laos with a valid passport and visa obtained from a Lao embassy or consulate abroad, or a visa obtained on arrival at an international border checkpoint.

**Regional tourists** are tourists from neighboring countries such as: Thailand, China, Myanmar, Vietnam and Cambodia, which share borders with Laos. They enter Laos with valid border passes or passports. Although some of them are called “day trippers,” they may make overnight stays.

From 1991 to 2002, there was a type of tourist called **Tourists for visa extension**. They are temporary workers in Thailand who cross over the border into Laos for the extension of their three-month visas before reentering Thailand. These tourists are mainly from India, Pakistan, Sri Lanka, Nepal and Bangladesh. However, from 2003 this type of tourist has been reclassified as “international tourists”.

### Sources of Data

The statistical data on **international tourists** were collected through the embarkation/disembarkation cards of the immigration department and from documents received by the Ministry of Information, Culture and Tourism (MICT) via local travel companies. These documents contain the following information:

Name of Tour Company

Name of tourist

Gender

Passport number

Nationality

Length of stay

Port of entry

Accommodations

Since 1995, data on **international tourists** have been collected only from embarkation / disembarkation cards of the immigration department.

- Data on **regional tourists** were collected from tabulations sent to the Tourism Development Department (TDD) by immigration officers at each border checkpoint.
- Data on tourist characteristics, length of stay, and average expenditure per person per day were all calculated using statistical surveys conducted periodically every year through sampling survey methods.

## Checkpoints of Lao PDR

### *By air:*

- **Wattay International Airport** is the main entry point by air for international tourists; flights are available through Lao Airlines, Thai Airways, Vietnam Airlines, Air Asia, China Eastern Airlines and Bangkok Airways from Vientiane to Bangkok, Chiang Mai, Hanoi, Ho Chi Minh, Kuala Lumpur, Kunming, Phnom Penh, Siem Reap, Seoul, Singapore, Guangzhou, Changsha, and Busan.
- **Luang Prabang International Airport** is also an international entry point, and regular flights are available from Luang Prabang to Vientiane, Pakse, Chiang Mai, Bangkok, Hanoi, Jinghong, and Siem Reap. The operating airlines at Luang Prabang International Airport are Lao Airlines, Bangkok Airway, Air Asia and Vietnam Airlines.
- **Savannakhet International Airport** is one of the international entry points which offers the international flight from Savannakhet to Bangkok and vice-versa that operated by Lao Airlines.
- **Pakse International Airport** is one of the international entry points and it is a stopover from Vientiane to Phnom Penh, Siem Reap, Ho Chi Minh and Bangkok. Lao Airlines flies from Pakse to Bangkok via Savannakhet.

In addition, there are several **provincial airports**, used only for domestic flights within the Lao PDR. (Luang Namtha, Oudomxay, Bokeo, Huaphanh, Xiengkhouang and Phangsaly).

## By land:

### From Thailand:

- Mittaphab (Friendship Bridge I)**, Vientiane Capital, the major point of entry for regional and international tourists.
- Thanaleng Railway Station**, Vientiane Capital.
- Mouang Mone, Friendship Bridge IV and Golden Triangle**, Bokeo Province.
- Pakxan**, Bolikhamxay Province.
- Thakhek, Mittaphab (Friendship Bridge III)**, Khammouane Province.
- Mittaphab (Friendship Bridge II)**, Savannakhet Province.
- Vang Tao**, Champassack Province.
- Nam Heuang Bridge, Nam Ngeun and Phoudou**, Xaiyabouly Province.

### From China:

- Boten**, LuangNamtha Province.
- Lantoui**, Phongsaly Province.

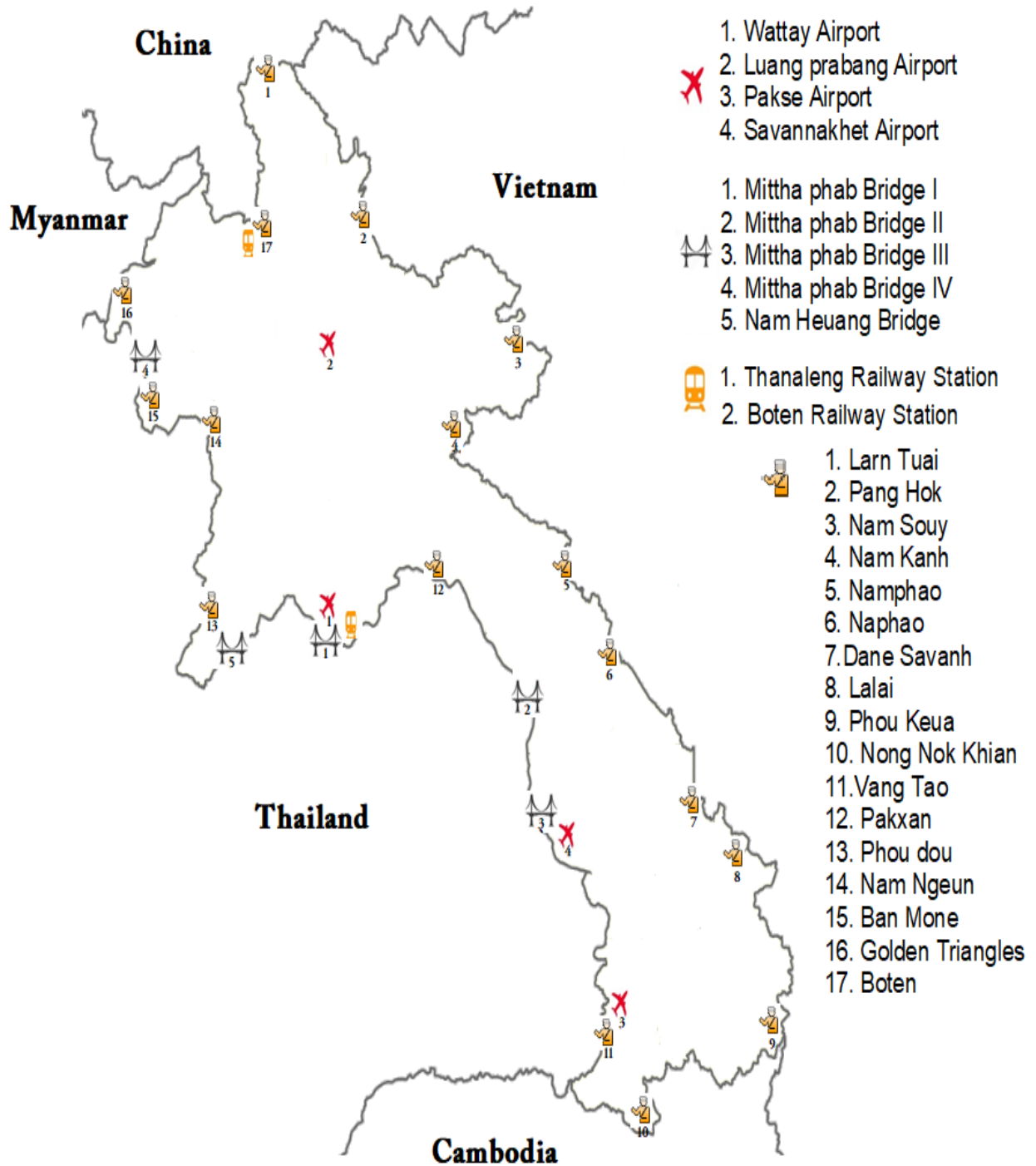
### From Vietnam:

- Dane Savanh**, Savannakhet Province, the major point of entry for Vietnamese travelers.
- Nam Phao**, Bolikhamxay Province.
- Nam Kanh**, Xieng Khuang Province (regional border checkpoint only).
- Na Phao**, Khammouane Province.
- Nam Souy**, Huaphanh Province.
- Pang Hok**, Phongsaly Province.
- Phoukeua**, Attapeu Province.
- Lalai**, Saravanh Province.

### From Cambodia:

- Nong Nok Khian**, Champassack Province.

## Laos International Border Checkpoints





## Part I: Tourist Arrival Statistics 2021

**Table 1: Number of Tourist Arrivals, Revenue from Tourism, And Average Length of Stay from 1990-2021**

Year	Number of Tourist Arrivals	(%) $\Delta$	Average Length of Stay (Days) for International Tourists	Average Length of Stay (Days) for Regional Tourists	Average Length of Stay (Days) for the Total Tourist Arrivals	Revenue from Tourism (Dollars)
1990	14,400	N/A	N/A	N/A	N/A	N/A
1991	37,613	161.2	N/A	N/A	N/A	2,250,000
1992	87,571	132.8	N/A	N/A	N/A	4,510,000
1993	102,946	17.5	3.5	N/A	N/A	6,280,000
1994	146,155	41.9	5.1	N/A	N/A	7,557,600
1995	346,460	137.0	4.3	N/A	N/A	24,738,480
1996	403,000	16.3	4.8	1.8	3.3	43,592,263
1997	463,200	14.9	5.0	3.0	4.0	73,276,904
1998	500,200	7.9	5.0	2.4	3.7	79,960,145
1999	614,278	22.8	5.5	2.4	4.0	97,265,324
2000	737,208	20.0	5.5	2.4	4.0	113,898,285
2001	673,823	-9.0	8.0	2.4	5.2	103,786,323
2002	735,662	9.1	6.5	2.1	4.3	113,409,883
2003	636,361	-14.0	6.0	2.0	4.0	87,302,412
2004	894,806	41.0	6.5	2.0	4.3	118,947,707
2005	1,095,315	22.0	7.0	2.0	4.5	146,770,074
2006	1,215,106	11.0	7.0	2.0	4.5	173,249,896
2007	1,623,943	34.0	7.0	2.0	4.5	233,304,695
2008	1,736,787	7.0	6.5	2.0	4.3	275,515,758
2009	2,008,363	16.0	7.0	2.0	4.5	267,700,224
2010	2,513,028	25.0	7.0	2.0	4.5	381,669,031
2011	2,723,564	8.0	7.0	2.0	4.5	406,184,338
2012	3,330,072	22.3	7.2	2.0	4.6	506,022,586
2013	3,779,490	13.0	8.4	2.0	5.2	595,909,127
2014	4,158,719	10.0	7.9	2.0	4.9	641,636,543
2015	4,684,429	13.0	7.5	2.0	4.8	725,365,681
2016	4,239,047	-10.0	7.5	2.0	4.8	724,191,957
2017	3,868,838	-8.7	8.3	2.0	5.2	648,067,008
2018	4,186,432	8.2	7.9	2.0	5.0	811,010,661
2019	4,791,065	14.4	7.9	2.0	5.0	934,710,409
2020	886,447	-81.5	7.9	2.0	5.0	213,367,141
2021	N/A	N/A	N/A	N/A	N/A	N/A

## Summary

Due to its strategic location in the heart of the Indochina Peninsula and Southeast Asia, Lao PDR is a destination for long-distance tourists who travel to the neighboring countries such as Thailand, Vietnam and Cambodia and then to Lao PDR. Therefore, the number of tourists visiting Lao PDR are depended on various factors, such as the convenience of transportation, in-out of country, diversity and quality of tourism products, safety and security of tourists. In addition, there were other factors that influenced tourist came to Lao PDR as well including the epidemic situation of COVID-19, natural disasters, the economic situation, politics, terrorism and others.

Tourism is one of the six important priorities for Lao PDR socio-economic development. Therefore, the Ministry of Information, Culture and Tourism has developed the Lao Tourism Development Strategic Plan for 2021-2025, which aligned with the government's policy to promote the natural, cultural, historical and agricultural attractions for the 'green tourism' and its sustainability. There were 6 targets set in the Tourism Development Plan for Lao PDR such as: 1. Develop the Human Resources in Tourism Sector for the better political legitimacy and provide the technical capacity building, 2. Develop and improve the tourism infrastructure and facilities, 3. Create, improve and disseminate the tourism laws and regulations, 4. Develop and improve the quality and sustainability of the tourism products and services, 5. Advertise and Promote Lao tourism to reach its target market, 6. Coordinate and cooperate with the relevant stakeholders including public and private sectors and both domestic and international for the development, promotion and effective management of tourism.

From 1990 – 2015, the number of international tourist arrivals entered to Lao PDR was steadily increasing which could be seen from 14,400 visitors in 1990 jumped to 4,684,429 in 2015. Since 2016 this trend has changed, with a drop of 10% in 2016 (4,239,047 visitors), and a further drop of 8.7% in 2017 (3,868,838). However, tourism sector remains a driver in the socio-economic development of Lao PDR. In 2018 showed a slight increase in tourist arrivals by 8.2% compared to 2017 (4,186,432) and this was considered as the successful Visiting Laos Year. In 2019, the growth continued with an Increase of about 14.4% over 2018.

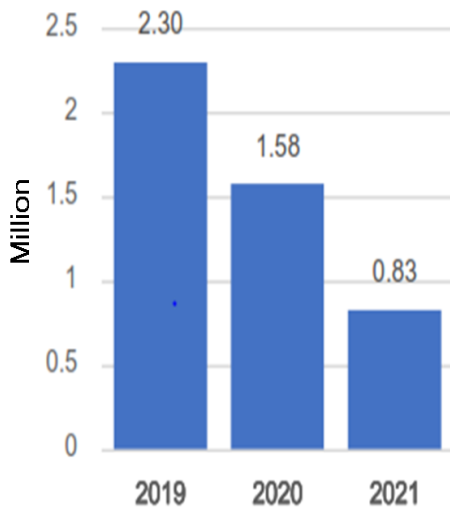
In 2020, COVID-19 badly hit the global and devastating effect the tourism industry in worldwide. To prevent the spreading of the disease, the government announced the control measures, including the closure of international checkpoints and various borders since April 2020 onward, reducing international tourists by 81.5% from 4,791,065 in 2019 to 886,447. Since then there was no international and regional visitors travel to Lao PDR.

## **International and regional economic situation**

COVID-19 outbreaks appear to be exacerbated throughout the global and region, but with the advent of vaccines to deal with the plague, combined with the immunization efforts of many countries around the world. As a result, most of countries around the world are now introducing the concept of 'New Normal' which reducing the measures of lock down. These include the United States, the United Kingdom, China, etc.

In addition, many countries in Europe and Asia have also been hit economically by the war between Russia and Ukraine, which they are currently suffering with the inflation, rising of the oil prices and high living costs. According to the International Monetary Fund (IMF), the global economic forecast for 2022 has been revised from 4.9% in October 2021 to 4.4% in January 2022, which was 0.5% decreasing.

As a result, Lao PDR has been hit badly by the foreign currency fluctuation (exchange rate weakens) and high inflation rate. In addition, oil and commodity prices in the market were double increased due to the inability to import oil from major producers.



Lao tourism has been severely affected by the outbreak of COVID-19, which could be seen through the figure of tourist and its revenues was significantly dropped in 2021 compared to 2020. The number of domestic tourist visitors slowed down from 2.3 million in 2019 to 828,592 in 2021.

Source: National Institute Of Economics and Sciences based on data from Ministry of Information, Culture and Tourism

## Lao Economy Trends

The Lao economy in 2022 is expected to grow less than planned due to various factors, which included the inflation, rising of living costs, big jump in the world oil prices, increasing of the commodity prices and a stronger foreign currency, especially the US Dollar, Thai Baht and Yuan. However, the National Institute of Economics and Social Sciences has analyzed that Lao PDR's economy will grow by 4.4% in 2022 and the 'industrial sector' will be the main driver of the economic growth, which contributes 2.8% to the total economic growth, follow by tourism at 0.7%, agriculture at 0.3% and the net taxes on products at 0.2% respectively.

Details	2016	2017	2018	2019	2020	2021	2022	2023
Contribution to the economy growth	7.00%	6.90%	6.30%	5.50%	3.30%	3.50%	4.00%	4.50%
Industry	3.90%	3.90%	2.70%	2.00%	3.30%	2.30%	2.70%	2.90%
Tourism & Service Sector	1.90%	1.80%	2.70%	2.70%	-0.50%	0.50%	0.70%	0.90%
Agriculture	0.50%	0.50%	0.20%	0.20%	0.20%	0.30%	0.20%	0.20%
Net Taxes on Products	0.80%	0.70%	0.60%	0.60%	0.30%	0.30%	0.30%	0.50%



**Table 2: Tourist Arrivals to Laos by Region in 2021**

Region	2015	2016	2017	2018	2019	2020	2021
ASEAN	3,588,538	3,083,383	2,747,096	2,886,844	3,198,829	555,519	NA
Asia Pacific	778,942	836,282	884,875	1,055,415	1,317,478	226,297	NA
Europe	217,307	221,908	161,194	165,808	182,465	70,459	NA
Americas	88,987	86,211	64,227	69,101	82,652	30,176	NA
Africa and Middle East	10,655	11,263	11,446	9,264	9,641	3,996	NA
<b>Grand Total</b>	<b>4,684,429</b>	<b>4,239,047</b>	<b>3,868,838</b>	<b>4,186,432</b>	<b>4,791,065</b>	<b>886,447</b>	<b>NA</b>

**Table 3: Market Share of Tourist Arrivals by Region (%) in 2021**

Region	2015	2016	2017	2018	2019	2020	2021
ASEAN	76.61%	72.74%	71.01%	68.96%	66.77%	62.67%	NA
Asia Pacific	16.63%	19.73%	22.87%	25.21%	27.50%	25.53%	NA
Europe	4.64%	5.23%	4.17%	3.96%	3.81%	7.95%	NA
Americas	1.90%	2.03%	1.66%	1.65%	1.73%	3.40%	NA
Africa and Middle East	0.23%	0.27%	0.30%	0.22%	0.20%	0.45%	NA
<b>Grand Total</b>	<b>100%</b>	<b>100%</b>	<b>100%</b>	<b>100%</b>	<b>100%</b>	<b>100%</b>	<b>NA</b>

**Table 4: Tourist Arrivals Change over Previous Year (%)**

Region	15/14	16/15	17/16	18/17	19/18	20/19	21/20
ASEAN	11%	-14%	-11%	5%	11%	-83%	NA
Asia Pacific	24%	7%	6%	19%	25%	-83%	NA
Europe	4%	2%	-27%	3%	10%	-61%	NA
Americas	3%	-3%	-26%	8%	20%	-63%	NA
Africa and Middle East	19%	6%	2%	-19%	4%	-59%	NA
<b>Grand Total</b>	<b>13%</b>	<b>-10%</b>	<b>-8.73%</b>	<b>8.2%</b>	<b>14.4%</b>	<b>-81.5%</b>	<b>NA</b>

**Table 5: Number of Tourist Arrivals to Laos by Category from 2019-2021**

Category	Border Pass		Border Pass		Passport		Total	
	Day Tripper	Stay Overnight	2020	2021	2020	2021	2020	2021
	2020		2020	2021	2020	2021	2020	2021
<b>Grand Total</b>	<b>74,823</b>	<b>120,832</b>	<b>195,655</b>	<b>N/A</b>	<b>690,792</b>	<b>N/A</b>	<b>886,447</b>	<b>N/A</b>
<b>International Tourist</b>					<b>205,269</b>		<b>205,269</b>	<b>N/A</b>
<b>Regional Tourist</b>	<b>74,823</b>	<b>120,832</b>	<b>195,655</b>	<b>N/A</b>	<b>485,523</b>	<b>N/A</b>	<b>681,178</b>	<b>N/A</b>
Thailand	56,315	84,473	140,788	N/A	209,315	N/A	350,103	N/A
Vietnam	7,216	14,650	21,866	N/A	164,314	N/A	186,180	N/A
China	10,493	20,368	30,861	N/A	107,605	N/A	138,466	N/A
Cambodia	289	434	723	N/A	4,289	N/A	5,012	N/A
Myanmar	510	907	1,417	N/A	-	N/A	1,417	N/A

**Table 6: Revenue Generating from Tourism 2020-2021**

Category	Number of Tourist Arrivals (person)	Average Length of Stay (days)	Average Expenditure per Person per day (dollars)	Revenue from Tourism in 2020 (dollars)	Revenue from Tourism in 2021 (dollars)
<b>Total</b>	<b>886,447</b>	<b>5</b>	<b>56.47</b>	<b>213,367,141</b>	<b>N/A</b>
<b>International Tourist</b>	<b>205,269</b>	<b>7.93</b>	<b>83.64</b>	<b>136,147,784</b>	<b>N/A</b>
<b>Regional Tourist</b>	<b>681,178</b>			<b>77,219,357</b>	<b>N/A</b>
Thai (Passport)	209,315	3	52	32,653,140	N/A
Thai (Border pass)	140,788	1	20	2,815,760	N/A
Vietnam (Passport)	164,314	3	30	14,788,260	N/A
Vietnam (Day Tripper)	21,866	1	12	262,392	N/A
China (Passport)	107,605	3	80	25,825,200	N/A
China (Day Tripper)	30,861	1	15	462,915	N/A
Cambodia (Passport)	4,289	3	30	386,010	N/A
Cambodia (Border pass)	723	1	12	8,676	N/A
Myanmar (Passport)	-	3	30	-	N/A
Myanmar (Border pass)	1,417	1	12	17,004	N/A

**Table 7: Tourist Arrivals to Laos by Nationality (Percent Increase) from 2016-2021**

Region	Country	2016	2017	2018	2019	2020	% ∇	2021
<b>Grand Total</b>		<b>4,239,047</b>	<b>3,868,838</b>	<b>4,186,432</b>	<b>4,791,065</b>	<b>886,447</b>	<b>-81.5</b>	<b>N/A</b>
<b>ASEAN</b>		<b>3,083,383</b>	<b>2,747,096</b>	<b>2,886,844</b>	<b>3,198,829</b>	<b>555,519</b>	<b>-83</b>	<b>N/A</b>
	Brunei	484	342	278	389	103	-74	N/A
	Cambodia	16,536	15,108	18,908	28,342	5,012	-82	N/A
	Indonesia	5,010	3,241	3,487	5,161	1,217	-76	N/A
	Malaysia	24,391	19,114	26,002	28,321	5,800	-80	N/A
	Myanmar	3,695	2,848	22,132	22,524	1,417	-94	N/A
	Philippines	16,750	10,168	10,826	17,187	3,679	-79	N/A
	Singapore	8,512	6,829	7,692	11,730	2,008	-83	N/A
	Thailand	2,009,605	1,797,803	1,929,934	2,160,300	350,103	-84	N/A
	Vietnam	998,400	891,643	867,585	924,875	186,180	-80	N/A
<b>Asia and Pacific</b>		<b>836,282</b>	<b>884,875</b>	<b>1,055,415</b>	<b>1,317,478</b>	<b>226,297</b>	<b>-83</b>	<b>N/A</b>
	Australia	33,077	20,886	19,607	24,750	7,271	-71	N/A
	China	545,493	639,185	805,833	1,022,727	138,466	-86	N/A
	India	8,249	4,343	4,864	8,152	1,743	-79	N/A
	Japan	49,191	32,064	38,985	41,736	11,085	-73	N/A
	Korea (Rep)	173,260	170,571	174,405	203,191	40,210	-80	N/A
	New Zealand	4,787	3,202	3,460	3,965	1,226	-69	N/A
	Taiwan (pr. of China)	14,005	4,329	4,823	6,956	1,714	-75	N/A
	Others	8,220	10,295	3,438	6,001	24,582	310	N/A
<b>Europe</b>		<b>221,908</b>	<b>161,194</b>	<b>165,808</b>	<b>182,465</b>	<b>70,459</b>	<b>-61</b>	<b>N/A</b>
	Austria	5,324	2,874	3,237	3,320	1,250	-62	N/A
	Belgium	5,682	4,371	5,322	6,099	1,970	-68	N/A
	Denmark	4,479	3,198	3,892	3,134	1,591	-49	N/A
	Finland	3,218	2,023	2,287	1,719	780	-55	N/A
	France	54,953	36,760	39,315	44,416	15,509	-65	N/A
	Germany	34,018	23,776	22,915	25,346	8,632	-66	N/A
	Greece	593	481	520	586	246	-58	N/A
	Italy	10,052	7,537	6,198	7,330	2,751	-62	N/A
	Netherlands	7,004	5,500	7,804	8,877	2,287	-74	N/A
	Norway	4,018	2,334	2,913	2,248	874	-61	N/A
	Russia	13,033	10,986	8,963	12,054	3,144	-74	N/A
	Spain	5,461	4,589	5,309	6,157	1,476	-76	N/A
	Sweden	5,795	3,483	4,802	3,475	1,419	-59	N/A
	Switzerland	10,603	7,956	9,749	8,512	2,921	-66	N/A
	United Kingdom	39,170	27,723	26,801	31,976	11,592	-64	N/A
	Others	18,505	17,603	15,781	17,216	14,017	-19	N/A
<b>Americas</b>		<b>86,211</b>	<b>64,227</b>	<b>69,101</b>	<b>82,652</b>	<b>30,176</b>	<b>-63</b>	<b>N/A</b>
	Canada	19,315	13,467	10,759	12,873	4,638	-64	N/A
	USA	58,094	38,765	49,178	61,184	18,116	-70	N/A
	Others	8,802	11,995	9,164	8,595	7,422	-14	N/A
<b>Africa and Middle East</b>		<b>11,263</b>	<b>11,446</b>	<b>9,264</b>	<b>9,641</b>	<b>3,996</b>	<b>-59</b>	<b>N/A</b>
	Israel	3,593	2,128	2,997	4,041	1,664	-59	N/A
	Others	7,670	9,318	6,267	5,600	2,332	-58	N/A

**Table 8: Tourist Arrivals to Laos by Nationality (Market Share) from 2017-2021**

Region	Country	2017		2018		2019		2020		2021
<b>Grand Total</b>		<b>3,868,838</b>	<b>100%</b>	<b>4,186,432</b>	<b>100%</b>	<b>4,791,065</b>	<b>100%</b>	<b>886,447</b>	<b>100%</b>	<b>N/A</b>
<b>ASEAN</b>		<b>2,747,096</b>	<b>71.01</b>	<b>2,886,844</b>	<b>68.96</b>	<b>3,198,829</b>	<b>66.77</b>	<b>555,519</b>	<b>62.67</b>	<b>N/A</b>
	Brunei	342	0.01	278	0.01	389	0.01	103	0.01	N/A
	Cambodia	15,108	0.39	18,908	0.45	28,342	0.59	5,012	0.57	N/A
	Indonesia	3,241	0.08	3,487	0.08	5,161	0.11	1,217	0.14	N/A
	Malaysia	19,114	0.49	26,002	0.62	28,321	0.59	5,800	0.65	N/A
	Myanmar	2,848	0.07	22,132	0.53	22,524	0.47	1,417	0.16	N/A
	Philippines	10,168	0.26	10,826	0.26	17,187	0.36	3,679	0.42	N/A
	Singapore	6,829	0.18	7,692	0.18	11,730	0.24	2,008	0.23	N/A
	Thailand	1,797,803	46.47	1,929,934	46.10	2,160,300	45.09	350,103	39.50	N/A
	Vietnam	891,643	23.05	867,585	20.72	924,875	19.30	186,180	21.00	N/A
<b>Asia and Pacific</b>		<b>884,875</b>	<b>22.87</b>	<b>1,055,415</b>	<b>25.21</b>	<b>1,317,478</b>	<b>27.50</b>	<b>226,297</b>	<b>25.53</b>	<b>N/A</b>
	Australia	20,886	0.54	19,607	0.47	24,750	0.52	7,271	0.82	N/A
	China	639,185	16.52	805,833	19.25	1,022,727	21.35	138,466	15.62	N/A
	India	4,343	0.11	4,864	0.12	8,152	0.17	1,743	0.20	N/A
	Japan	32,064	0.83	38,985	0.93	41,736	0.87	11,085	1.25	N/A
	Korea (Rep)	170,571	4.41	174,405	4.17	203,191	4.24	40,210	4.54	N/A
	New Zealand	3,202	0.08	3,460	0.08	3,965	0.08	1,226	0.14	N/A
	Taiwan (pr. of China)	4,329	0.11	4,823	0.12	6,956	0.15	1,714	0.19	N/A
	Others	10,295	0.27	3,438	0.08	6,001	0.13	24,582	2.77	N/A
<b>Europe</b>		<b>161,194</b>	<b>4.17</b>	<b>165,808</b>	<b>3.96</b>	<b>182,465</b>	<b>3.81</b>	<b>70,459</b>	<b>7.95</b>	<b>N/A</b>
	Austria	2,874	0.07	3,237	0.08	3,320	0.07	1,250	0.14	N/A
	Belgium	4,371	0.11	5,322	0.13	6,099	0.13	1,970	0.22	N/A
	Denmark	3,198	0.08	3,892	0.09	3,134	0.07	1,591	0.18	N/A
	Finland	2,023	0.05	2,287	0.05	1,719	0.04	780	0.09	N/A
	France	36,760	0.95	39,315	0.94	44,416	0.93	15,509	1.75	N/A
	Germany	23,776	0.61	22,915	0.55	25,346	0.53	8,632	0.97	N/A
	Greece	481	0.01	520	0.01	586	0.01	246	0.03	N/A
	Italy	7,537	0.19	6,198	0.15	7,330	0.15	2,751	0.31	N/A
	Netherlands	5,500	0.14	7,804	0.19	8,877	0.19	2,287	0.26	N/A
	Norway	2,334	0.06	2,913	0.07	2,248	0.05	874	0.10	N/A
	Russia	10,986	0.28	8,963	0.21	12,054	0.25	3,144	0.35	N/A
	Spain	4,589	0.12	5,309	0.13	6,157	0.13	1,476	0.17	N/A
	Sweden	3,483	0.09	4,802	0.11	3,475	0.07	1,419	0.16	N/A
	Switzerland	7,956	0.21	9,749	0.23	8,512	0.18	2,921	0.33	N/A
	United Kingdom	27,723	0.72	26,801	0.64	31,976	0.67	11,592	1.31	N/A
	Others	17,603	0.45	15,781	0.38	17,216	0.36	14,017	1.58	N/A
<b>Americas</b>		<b>64,227</b>	<b>1.66</b>	<b>69,101</b>	<b>1.65</b>	<b>82,652</b>	<b>1.73</b>	<b>30,176</b>	<b>3.40</b>	<b>N/A</b>
	Canada	13,467	0.35	10,759	0.26	12,873	0.27	4,638	0.52	N/A
	USA	38,765	1.00	49,178	1.17	61,184	1.28	18,116	2.04	N/A
	Others	11,995	0.31	9,164	0.22	8,595	0.18	7,422	0.84	N/A
<b>Africa and Middle East</b>		<b>11,446</b>	<b>0.30</b>	<b>9,264</b>	<b>0.22</b>	<b>9,641</b>	<b>0.20</b>	<b>3,996</b>	<b>0.45</b>	<b>N/A</b>
	Israel	2,128	0.06	2,997	0.07	4,041	0.08	1,664	0.19	N/A
	Others	9,318	0.24	6,267	0.15	5,600	0.12	2,332	0.26	N/A



**Table 9: Tourist Arrivals to Laos by Month in 2021**

Region	Country	Months												Total	
		Jan	Feb	Mar	Apr	May	Jun	Jul	Aug	Sep	Oct	Nov	Dec	2020	2021
<b>Grand Total</b>		<b>351,104</b>	<b>345,900</b>	<b>189,443</b>										<b>886,447</b>	<b>N/A</b>
<b>ASEAN</b>		<b>186,852</b>	<b>233,120</b>	<b>135,547</b>										<b>555,519</b>	<b>N/A</b>
	Brunei	44	32	27										103	N/A
	Cambodia	1,874	1,689	1,449										5,012	N/A
	Indonesia	596	360	261										1,217	N/A
	Malaysia	2,641	1,855	1,304										5,800	N/A
	Myanmar	509	660	248										1,417	N/A
	Philippines	1,528	1,336	815										3,679	N/A
	Singapore	785	754	469										2,008	N/A
	Thailand	116,211	157,659	76,233										350,103	N/A
	Vietnam	62,664	68,775	54,741										186,180	N/A
<b>Asia and Pacific</b>		<b>121,849</b>	<b>73,659</b>	<b>30,789</b>										<b>226,297</b>	<b>N/A</b>
	Australia	3,555	2,412	1,304										7,271	N/A
	China	72,119	44,108	22,239										138,466	N/A
	India	776	626	341										1,743	N/A
	Japan	3,714	4,826	2,545										11,085	N/A
	Korea (Rep)	16,680	19,981	3,549										40,210	N/A
	New Zealand	700	302	224										1,226	N/A
	Taiwan (pr. of China)	852	618	244										1,714	N/A
	Others	23,453	786	343										24,582	N/A
<b>Europe</b>		<b>27,364</b>	<b>25,737</b>	<b>17,358</b>										<b>70,459</b>	<b>N/A</b>
	Austria	449	458	343										1,250	N/A
	Belgium	699	757	514										1,970	N/A
	Denmark	411	662	518										1,591	N/A
	Finland	267	332	181										780	N/A
	France	4,876	6,383	4,250										15,509	N/A
	Germany	3,487	2,722	2,423										8,632	N/A
	Greece	101	99	46										246	N/A
	Italy	1,186	1,109	456										2,751	N/A
	Netherlands	926	802	559										2,287	N/A
	Norway	259	375	240										874	N/A
	Russia	1,404	789	951										3,144	N/A
	Spain	496	622	358										1,476	N/A
	Sweden	541	462	416										1,419	N/A
	Switzerland	928	1,174	819										2,921	N/A
	United Kingdom	3,099	4,956	3,537										11,592	N/A
	Others	8,235	4,035	1,747										14,017	N/A
<b>Americas</b>		<b>13,402</b>	<b>11,666</b>	<b>5,108</b>										<b>30,176</b>	<b>N/A</b>
	Canada	1,654	1,912	1,072										4,638	N/A
	USA	7,821	7,212	3,083										18,116	N/A
	Others	3,927	2,542	953										7,422	N/A
<b>Africa and Middle East</b>		<b>1,637</b>	<b>1,718</b>	<b>641</b>										<b>3,996</b>	<b>N/A</b>
	Israel	574	767	323										1,664	N/A
	Others	1,063	951	318										2,332	N/A

**Table 10: Tourist Arrivals to Laos by Quarter from 2015-2021**

Months	2015	2016	2017	2018	2019	2020	2021
<b>Grand Total</b>	<b>4,684,429</b>	<b>4,239,047</b>	<b>3,868,838</b>	<b>4,186,432</b>	<b>4,791,065</b>	<b>886,447</b>	<b>N/A</b>
<b>1st QUARTER</b>	<b>1,284,896</b>	<b>1,248,017</b>	<b>1,045,329</b>	<b>1,067,696</b>	<b>1,062,377</b>	<b>886,447</b>	<b>N/A</b>
January	436,358	400,140	339,768	358,248	331,524	351,104	
February	426,697	450,902	350,344	347,227	337,356	345,900	
March	421,841	396,975	355,217	362,221	393,497	189,443	
<b>2nd QUARTER</b>	<b>1,040,693</b>	<b>1,002,972</b>	<b>959,209</b>	<b>1,059,584</b>	<b>1,166,082</b>	<b>-</b>	<b>N/A</b>
April	416,628	363,538	346,559	376,133	404,945		
May	325,095	343,162	314,344	339,165	392,491		
June	298,970	296,272	298,306	344,286	368,646		
<b>3rd QUARTER</b>	<b>1,158,084</b>	<b>922,826</b>	<b>822,418</b>	<b>964,806</b>	<b>1,218,128</b>	<b>-</b>	<b>N/A</b>
July	337,805	296,242	278,971	282,602	418,537		
August	358,358	323,603	280,983	386,911	437,586		
September	461,921	302,981	262,464	295,293	362,005		
<b>4th QUARTER</b>	<b>1,200,756</b>	<b>1,065,232</b>	<b>1,041,882</b>	<b>1,094,346</b>	<b>1,344,478</b>	<b>-</b>	<b>N/A</b>
October	400,054	336,863	325,574	348,281	413,251		
November	420,650	367,964	358,997	352,225	473,648		
December	380,052	360,405	357,311	393,840	457,579		

**Table 11: Tourist Arrivals to Laos by Quarter from 2017-2021**

Months	2017	2018	2019	2020			% ▽ 20/19	2021
				International	Regional	Total		
<b>Grand Total</b>	<b>3,868,838</b>	<b>4,186,432</b>	<b>4,791,065</b>	<b>205,269</b>	<b>681,178</b>	<b>886,447</b>	<b>-81.5</b>	<b>N/A</b>
January	339,768	358,248	331,524	97,727	253,377	351,104	5.9	N/A
February	350,344	347,227	337,356	73,009	272,891	345,900	2.5	N/A
March	355,217	362,221	393,497	34,533	154,910	189,443	-51.9	N/A
April	346,559	376,133	404,945				-100	N/A
May	314,344	339,165	392,491				-100	N/A
June	298,306	344,286	368,646				-100	N/A
July	278,971	282,602	418,537				-100	N/A
August	280,983	386,911	437,586				-100	N/A
September	262,464	295,293	362,005				-100	N/A
October	325,574	348,281	413,251				-100	N/A
November	358,997	352,225	473,648				-100	N/A
December	357,311	393,840	457,579				-100	N/A

**Table 12: Tourist Arrivals to Laos by Checkpoint from 2017-2021**

Porty of Entry	2017	2018	2019	2020	Regional Visitors	Percent Share	Percent Change	2021
<b>Grand Total</b>	<b>3,838,157</b>	<b>4,186,432</b>	<b>4,791,065</b>	<b>886,447</b>	<b>624,181</b>	<b>% ▽ 100</b>	<b>% ▽ 20/19</b>	<b>N/A</b>
Wattay International Airport	364,714	355,621	574,137	103,559	-	2.16	-81.96	N/A
Savannakhet International Airport	3,709	18,236	2,966	643	-	0.01	-78.32	N/A
Pakse International Airport	12,378	14,567	12,545	5,152	-	0.11	-58.93	N/A
Luang Prabang International Airport	139,375	224,543	202,159	65,844	-	1.37	-67.43	N/A
Mitthaphab Bridge I	863,642	1,124,613	1,321,006	212,499	180,304	4.44	-83.91	N/A
ThaN/Aleng Railway Station	4,048	17,310	2,923	730	288	0.02	-75.03	N/A
Boten	493,308	485,873	536,906	79,827	79,496	1.67	-85.13	N/A
Mitthaphab Bridge IV	174,161	156,677	156,478	41,998	21,099	0.88	-73.16	N/A
Golden Triangles	-	163,544	240,777	22,909	22,264	0.48	-90.49	N/A
Ban Mone	-	21,304	19,478	540	540	0.01	-97.23	N/A
Mitthaphab Bridge II	517,903	419,304	405,031	79,427	73,130	1.66	-80.39	N/A
Dane Savanh	208,626	215,190	236,403	42,446	39,487	0.89	-82.05	N/A
Vang Tao	181,587	200,149	206,030	50,012	40,890	1.04	-75.73	N/A
Nong Nok Khian	28,915	31,332	51,904	10,721	6,123	0.22	-79.34	N/A
N/Amphao	168,933	177,238	128,093	27,034	25,371	0.56	-78.90	N/A
Pakxan	28,294	32,299	40,410	5,576	5,406	0.12	-86.20	N/A
Mitthaphab Bridge III	153,076	73,293	94,017	20,624	18,495	0.43	-78.06	N/A
N/Aphao	141,574	112,589	135,667	33,019	32,705	0.69	-75.66	N/A
N/Am Heuang Bridge	42,857	40,276	69,827	8,492	8,021	0.18	-87.84	N/A
N/Am Ngeun	50,303	52,099	53,351	13,337	13,029	0.28	-75.00	N/A
Phou dou	15,849	10,579	9,371	1,537	1,502	0.03	-83.60	N/A
N/Am Kanh	73,406	45,361	61,261	13,328	12,540	0.28	-78.24	N/A
N/Am Souy	16,943	10,913	14,766	4,289	4,008	0.09	-70.95	N/A
Pang Hok	33,983	34,311	45,597	8,587	5,884	0.18	-81.17	N/A
Lam Tuai	6,420	19,451	33,176	2,365	2,365	0.05	-92.87	N/A
Phou Keua	64,044	55,917	61,664	9,643	9,036	0.20	-84.36	N/A
Lalai	50,109	73,843	75,122	22,309	22,198	0.47	-70.30	N/A

**Table 13: Tourist Arrivals to Laos Through the Checkpoint by Nationality in 2021**

Region	Country	Port of Entry												
		Attapeu	Bokeo			Bolikhamsay		Champasak			Huaphanh	Khammoune		Luang Prabang
		Phou Keua	Mithphab Bridge IV	Golden Triangles	Ban Mone	Pakxan	Namphao	Vang Tao	Pakse International Airport	Nong Nok Khian	Nam Souy	Mithphab Bridge III	Naphao	Luang International Prabang Airport
<b>Grand Total</b>		<b>9,643</b>	<b>41,998</b>	<b>22,909</b>	<b>540</b>	<b>5,576</b>	<b>27,034</b>	<b>50,012</b>	<b>5,152</b>	<b>10,721</b>	<b>4,289</b>	<b>20,624</b>	<b>33,019</b>	<b>65,844</b>
<b>ASEAN</b>		<b>9,022</b>	<b>16,216</b>	<b>2,755</b>	<b>533</b>	<b>5,478</b>	<b>25,557</b>	<b>40,766</b>	<b>1,122</b>	<b>5,697</b>	<b>3,975</b>	<b>18,147</b>	<b>32,707</b>	<b>12,896</b>
	Brunei	-	-	-	-	-	-	-	2	1	-	1	-	8
	Cambodia	6	24	19	-	51	23	242	41	2,723	5	52	-	133
	Indonesia	5	29	41	-	4	10	7	24	6	-	15	1	193
	Malaysia	1	149	133	-	68	18	81	38	23	2	72	1	462
	Myanmar	2	18	24	533	1	10	14	6	11	-	11	2	45
	Philippines	14	290	8	-	4	220	61	42	25	5	28	5	319
	Singapore	2	32	32	-	3	3	37	14	15	-	14	1	580
	Thailand	63	14,677	2,334	-	5,241	302	38,927	289	46	3	13,514	359	10,077
	Vietnam	8,929	997	164	-	106	24,971	1,397	666	2,847	3,960	4,440	32,338	1,079
<b>Asia and Pacific</b>		<b>65</b>	<b>7,493</b>	<b>19,972</b>	<b>7</b>	<b>52</b>	<b>358</b>	<b>6,620</b>	<b>1,362</b>	<b>1,071</b>	<b>91</b>	<b>1,286</b>	<b>134</b>	<b>16,613</b>
	Australia	3	919	20	-	-	35	84	243	135	13	116	7	2,185
	China	36	5,383	19,723	7	7	65	310	309	496	40	478	6	7,753
	India	7	22	3	-	-	46	66	57	53	-	24	1	492
	Japan	6	280	17	-	10	51	261	212	65	16	118	2	3,341
	Korea (Rep)	1	347	64	-	5	100	347	390	114	3	34	5	1,169
	New Zealand	-	162	1	-	-	15	12	34	46	-	8	7	312
	Taiwan (pr. of China)	2	51	60	-	-	13	29	59	10	-	7	-	534
	Others	10	329	84	-	30	33	5,511	58	152	19	501	106	827
<b>Europe</b>		<b>535</b>	<b>12,420</b>	<b>86</b>	<b>-</b>	<b>21</b>	<b>780</b>	<b>2,038</b>	<b>1,879</b>	<b>3,198</b>	<b>181</b>	<b>880</b>	<b>84</b>	<b>24,191</b>
	Austria	-	287	-	-	-	14	40	47	54	1	10	4	550
	Belgium	4	392	1	-	-	19	43	102	113	5	16	3	634
	Denmark	2	366	4	-	-	7	16	36	27	4	17	2	558
	Finland	1	108	1	-	-	4	19	21	32	1	31	-	226
	France	34	2,058	5	-	11	141	451	445	1,277	50	64	25	6,210
	Germany	19	2,140	7	-	3	107	150	254	480	38	115	16	3,432
	Greece	-	43	-	-	-	5	-	4	3	-	3	-	144
	Italy	4	614	9	-	-	25	39	93	124	8	21	1	1,032
	Netherlands	2	253	-	-	1	52	54	77	172	19	45	5	811
	Norway	-	114	5	-	-	3	17	16	12	-	11	-	252
	Russia	423	151	3	-	1	84	23	44	58	11	3	3	411
	Spain	-	320	-	-	-	28	17	44	94	3	23	2	615
	Sweden	-	286	-	-	-	24	16	38	30	1	36	1	370
	Switzerland	6	406	15	-	4	13	92	116	129	14	43	3	1,118
	United Kingdom	13	2,202	23	-	1	134	130	356	326	10	94	12	4,539
	Others	27	2,680	13	-	-	120	931	186	267	16	348	7	3,289
<b>Americas</b>		<b>14</b>	<b>4,791</b>	<b>96</b>	<b>-</b>	<b>20</b>	<b>150</b>	<b>557</b>	<b>662</b>	<b>463</b>	<b>38</b>	<b>302</b>	<b>15</b>	<b>11,465</b>
	Canada	6	946	7	-	2	26	78	115	159	9	94	8	1,670
	USA	6	1,631	75	-	6	69	409	418	256	27	189	5	7,922
	Others	2	2,214	14	-	12	55	70	129	48	2	19	2	1,873
<b>Africa and Middle East</b>		<b>7</b>	<b>1,078</b>	<b>-</b>	<b>-</b>	<b>5</b>	<b>189</b>	<b>31</b>	<b>127</b>	<b>292</b>	<b>4</b>	<b>9</b>	<b>79</b>	<b>679</b>
	Israel	4	527	-	-	-	42	13	69	268	-	4	-	427
	Others	3	551	-	-	5	147	18	58	24	4	5	79	252



Port of Entry														Total	
Luang Namtha	Phongsaly		Savannakhet			Sravanh	Vientiane			Xayabouli			Xieng Khouang	2020	2021
Boten	Larn Tuai	Pang Hok	Mitha phab Bridge II	Dane Savanh	Savanh Airport	Lalai	Mitha phab Bridge I	Thanaleng Railway Station	Wattay Airport	Nam Heuang Bridge	Nam Ngeun	Phou dou	Nam Kanh		
79,827	2,365	8,587	79,427	42,446	643	22,309	212,499	730	103,559	8,492	13,337	1,537	13,328	886,447	NA
1,127	-	5,897	73,849	39,617	133	22,189	181,690	348	20,705	8,006	13,046	1,508	12,533	555,519	NA
-	-	1	-	1	-	-	51	2	36	-	-	-	-	103	NA
2	-	2	155	12	1	2	701	4	788	24	2	-	-	5,012	NA
-	-	-	32	7	1	-	278	3	549	1	5	2	4	1,217	NA
28	-	11	245	58	9	-	1,411	10	2,920	26	28	5	1	5,800	NA
17	-	-	177	10	2	-	245	12	253	1	20	2	1	1,417	NA
-	-	7	514	165	3	5	1,100	25	817	3	14	-	5	3,679	NA
8	-	2	47	9	5	-	419	21	749	7	7	-	1	2,008	NA
1,065	-	305	70,088	3,972	108	22	155,901	265	10,343	7,860	12,845	1,473	24	350,103	NA
7	-	5,569	2,591	35,383	4	22,160	21,584	6	4,250	84	125	26	12,497	186,180	NA
78,504	2,365	244	1,931	788	134	41	25,573	215	61,031	135	94	12	106	226,297	NA
6	-	6	171	93	22	-	416	13	2,736	19	13	-	16	7,271	NA
78,405	2,365	8	119	110	34	14	1,873	1	20,816	52	37	1	18	138,466	NA
-	-	8	19	49	2	3	121	2	764	-	2	-	2	1,743	NA
26	-	11	211	77	46	3	1,830	111	4,326	20	7	-	38	11,085	NA
24	-	29	265	311	2	6	6,204	40	30,672	21	31	-	26	40,210	NA
6	-	168	27	24	2	-	25	-	372	3	1	-	1	1,226	NA
14	-	1	14	1	13	-	60	-	840	3	-	-	3	1,714	NA
23	-	13	1,105	123	13	15	15,044	48	505	17	3	11	2	24,582	NA
75	-	425	2,372	1,414	160	25	4,540	123	14,077	226	138	9	582	70,459	NA
2	-	6	18	12	1	-	29	-	164	4	1	-	6	1,250	NA
2	-	24	43	32	5	-	53	5	457	8	5	-	4	1,970	NA
-	-	1	57	9	1	1	31	9	430	6	1	-	6	1,591	NA
4	-	2	61	19	7	-	4	-	230	5	-	-	4	780	NA
10	-	132	371	217	56	14	172	23	3,536	30	57	-	120	15,509	NA
17	-	42	192	154	21	1	77	14	1,261	44	19	1	28	8,632	NA
-	-	-	3	4	-	-	1	-	36	-	-	-	-	246	NA
-	-	40	32	35	2	-	34	3	616	6	-	-	13	2,751	NA
2	-	55	75	47	8	-	17	2	557	17	2	-	14	2,287	NA
-	-	-	73	9	1	-	16	2	326	10	1	-	6	874	NA
9	-	15	131	148	-	4	1,231	10	365	1	6	-	9	3,144	NA
5	-	18	11	29	-	-	10	5	234	1	-	-	17	1,476	NA
-	-	3	111	23	3	-	83	2	372	6	4	-	10	1,419	NA
4	-	28	100	12	16	-	267	14	478	17	17	-	9	2,921	NA
11	-	36	408	217	25	-	148	5	2,777	26	23	-	76	11,592	NA
9	-	23	686	447	14	5	2,367	29	2,238	45	2	8	260	14,017	NA
108	-	1,981	1,106	523	187	48	477	8	6,913	112	57	8	75	30,176	NA
27	-	16	156	69	22	3	115	1	1,088	1	8	-	12	4,638	NA
43	-	22	720	323	111	11	307	6	5,383	96	37	3	41	18,116	NA
38	-	1,943	230	131	54	34	55	1	442	15	12	5	22	7,422	NA
13	-	40	169	104	29	6	219	36	833	13	2	-	32	3,996	NA
2	-	28	5	33	1	-	2	-	212	-	-	-	27	1,664	NA
11	-	12	164	71	28	6	217	36	621	13	2	-	5	2,332	NA

**Table 14: Tourist Arrivals to Laos by Province from 2016 – 2021**

Province	2016	2017	2018	2019	2020	2021
<b>Grand Total</b>	<b>6,783,874</b>	<b>6,372,514</b>	<b>6,553,315</b>	<b>7,358,039</b>	<b>1,490,073</b>	<b>N/A</b>
Attapeu	130,773	71,924	98,720	164,139	22,445	N/A
Bokeo	219,603	207,864	331,477	637,842	155,359	N/A
Bolikhamxay	231,920	181,710	215,513	157,607	60,449	N/A
Champasak	621,870	831,779	979,264	1,077,645	17,807	N/A
Houaphanh	50,039	50,154	39,877	58,757	10,723	N/A
Khammouane	538,027	464,584	283,494	444,396	39,283	N/A
Luang N/Amtha	531,366	600,369	573,145	661,852	79,998	N/A
Luang Prabang	643,319	472,942	576,610	638,101	142,435	N/A
Oudomxay	192,496	186,351	130,540	118,468	40,817	N/A
Phongsaly	103,583	144,012	135,593	160,012	35,064	N/A
Saravanh	88,325	92,550	37,453	112,770	23,895	N/A
SavanN/Akhet	866,630	724,243	603,623	650,339	144,914	N/A
Sekong	34,024	38,429	30,720	55,438	1,711	N/A
Vientiane Capital	1,643,692	1,347,866	2,018,174	1,868,985	520,758	N/A
Vientiane Province	589,948	592,650	295,583	329,857	129,419	N/A
Xaisomboun	26,465	15,831	8,069	21,252	561	N/A
Xaiyabouli	197,628	218,995	118,190	117,172	42,497	N/A
Xieng Khouang	74,166	130,261	77,270	83,407	21,938	N/A

**Table 15: Lao Outbound Tourism by Province from 2015 – 2021**

Border Check Point	2015	2016	2017	2018	2019	2020	% ▽	2021
<b>Grand Total</b>	<b>3,066,525</b>	<b>3,058,815</b>	<b>3,049,152</b>	<b>3,206,870</b>	<b>2,690,430</b>	<b>706,904</b>	<b>-73.7</b>	<b>N/A</b>
Attapeu	7,497	5,249	5,569	4,322	3,842	1,648	-57.1	N/A
Bokeo	34,576	54,223	43,222	83,887	65,602	20,904	-68.1	N/A
Bolikhamsay	102,043	105,683	103,780	118,121	86,243	30,367	-64.8	N/A
Champasak	157,069	216,080	260,246	261,998	217,821	74,552	-65.8	N/A
Huaphanh	3,957	5,617	2,293	5,632	3,710	1,422	-61.7	N/A
Khammouane	495,225	495,540	393,197	92,312	68,488	23,406	-65.8	N/A
LuangN/Amtha	162,989	130,575	113,235	145,205	106,106	24,451	-77.0	N/A
Luangprabang	1,998	1,890	1,801	8,873	7,878	1,368	-82.6	N/A
Phongsaly	3,967	4,756	4,721	30,536	32,682	8,767	-73.2	N/A
Sravanh			11,384	9,964	11,506	3,491	-69.7	N/A
SavanN/Akhet	347,932	329,345	389,178	604,589	381,415	133,122	-65.1	N/A
Vientiane Capital	1,570,894	1,543,693	1,535,634	1,635,403	1,331,654	311,563	-76.6	N/A
Xayabouli	170,153	159,343	174,752	197,276	366,915	68,874	-81.2	N/A
Xiengkhouang	8,225	6,821	10,140	8,752	6,568	2,969	-54.8	N/A

**Table 16: Lao Outbound Tourism from 2018 – 2021**

Border Check Point	Total	Total	2020					Total	
	2018	2019	Official	Visit	Travel	Business	Other	2020	2021
<b>Total</b>	<b>3,206,870</b>	<b>2,690,430</b>	<b>2,099</b>	<b>290,375</b>	<b>328,690</b>	<b>35,700</b>	<b>50,040</b>	<b>706,904</b>	<b>N/A</b>
<b>Friendship bridge I</b>	<b>1,512,054</b>	<b>1,189,344</b>	<b>240</b>	<b>177,230</b>	<b>63,649</b>	<b>21</b>	<b>29,946</b>	<b>271,086</b>	<b>N/A</b>
Border Pass	534,178	345,353	-	106,185	18,265	-	-	124,450	N/A
Passport	977,876	843,991	240	71,045	45,384	21	29,946	146,636	N/A
<b>Wattay International Airport</b>	<b>123,349</b>	<b>142,310</b>	<b>5</b>	<b>2,744</b>	<b>13,875</b>	<b>13,875</b>	<b>9,978</b>	<b>40,477</b>	<b>N/A</b>
Border Pass	-	-	-	-	-	-	-	-	N/A
Passport	123,349	142,310	5	2,744	13,875	13,875	9,978	40,477	N/A
<b>Luangnamtha</b>	<b>145,205</b>	<b>106,106</b>	<b>107</b>	<b>6,308</b>	<b>6,798</b>	<b>10,730</b>	<b>508</b>	<b>24,451</b>	<b>N/A</b>
Border Pass	138,082	98,093	62	6,304	6,304	10,730	-	23,400	N/A
Passport	7,123	8,013	45	4	494	-	508	1,051	N/A
<b>Bolikhamstay</b>	<b>118,121</b>	<b>86,243</b>	<b>67</b>	<b>14,948</b>	<b>14,929</b>	<b>423</b>	<b>-</b>	<b>30,367</b>	<b>N/A</b>
Border Pass	44,736	29,312	-	3,206	8,388	423	-	12,017	N/A
Passport	73,385	56,931	67	11,742	6,541	-	-	18,350	N/A
<b>Khammouane</b>	<b>92,312</b>	<b>68,488</b>	<b>3</b>	<b>2,171</b>	<b>13,908</b>	<b>374</b>	<b>6,950</b>	<b>23,406</b>	<b>N/A</b>
Border Pass	32,034	6,523	-	9	374	374	15	772	N/A
Passport	60,278	61,965	3	2,162	13,534	-	6,935	22,634	N/A
<b>Savannakhet</b>	<b>587,535</b>	<b>380,913</b>	<b>48</b>	<b>666</b>	<b>131,244</b>	<b>92</b>	<b>791</b>	<b>132,841</b>	<b>N/A</b>
Border Pass	309,961	156,857	6	143	64,533	3	328	65,013	N/A
Passport	277,574	224,056	42	523	66,711	89	463	67,828	N/A
<b>Savannakhet International Airport</b>	<b>17,054</b>	<b>502</b>	<b>1</b>	<b>140</b>	<b>140</b>	<b>-</b>	<b>-</b>	<b>281</b>	<b>N/A</b>
Border Pass	-	-	-	-	-	-	-	-	N/A
Passport	17,054	502	1	140	140	-	-	281	N/A
<b>Bokeo</b>	<b>83,887</b>	<b>65,602</b>	<b>9</b>	<b>96</b>	<b>20,649</b>	<b>86</b>	<b>64</b>	<b>20,904</b>	<b>N/A</b>
Border Pass	36,176	31,826	-	96	9,166	82	64	9,408	N/A
Passport	47,711	33,776	9	-	11,483	4	-	11,496	N/A
<b>Champasak</b>	<b>259,337</b>	<b>202,715</b>	<b>124</b>	<b>43,782</b>	<b>22,941</b>	<b>-</b>	<b>-</b>	<b>66,847</b>	<b>N/A</b>
Border Pass	102,307	75,586	-	4,408	20,312	-	-	24,720	N/A
Passport	157,030	127,129	124	39,374	2,629	-	-	42,127	N/A
<b>Champasak Airport</b>	<b>2,661</b>	<b>15,106</b>	<b>2</b>	<b>-</b>	<b>7,703</b>	<b>-</b>	<b>-</b>	<b>7,705</b>	<b>N/A</b>
Border Pass	-	-	-	-	-	-	-	-	N/A
Passport	2,661	15,106	2	-	7,703	-	-	7,705	N/A
<b>Xayabouli</b>	<b>197,276</b>	<b>366,915</b>	<b>25</b>	<b>41,786</b>	<b>16,962</b>	<b>8,620</b>	<b>1,481</b>	<b>68,874</b>	<b>N/A</b>
Border Pass	69,552	156,187	-	9,932	7,620	8,620	1,481	27,653	N/A
Passport	127,724	210,728	25	31,854	9,342	-	-	41,221	N/A
<b>Huaphanh</b>	<b>5,632</b>	<b>3,710</b>	<b>841</b>	<b>13</b>	<b>390</b>	<b>176</b>	<b>2</b>	<b>1,422</b>	<b>N/A</b>
Border Pass	2,177	939	-	12	299	49	2	362	N/A
Passport	3,455	2,771	841	1	91	127	-	1,060	N/A
<b>Luangprabang International Airport</b>	<b>8,873</b>	<b>7,878</b>	<b>3</b>	<b>88</b>	<b>1,275</b>	<b>2</b>	<b>-</b>	<b>1,368</b>	<b>N/A</b>
Border Pass	-	-	-	-	-	-	-	-	N/A
Passport	8,873	7,878	3	88	1,275	2	-	1,368	N/A
<b>Xiengkhouang</b>	<b>8,752</b>	<b>6,568</b>	<b>31</b>	<b>303</b>	<b>2,578</b>	<b>57</b>	<b>-</b>	<b>2,969</b>	<b>N/A</b>
Border Pass	2,419	1,189	12	99	361	57	-	529	N/A
Passport	6,333	5,379	19	204	2,217	-	-	2,440	N/A
<b>Attapeu</b>	<b>4,322</b>	<b>3,842</b>	<b>529</b>	<b>56</b>	<b>794</b>	<b>9</b>	<b>260</b>	<b>1,648</b>	<b>N/A</b>
Border Pass	586	260	2	12	63	-	-	77	N/A
Passport	3,736	3,582	527	44	731	9	260	1,571	N/A
<b>Phongsaly</b>	<b>30,536</b>	<b>32,682</b>	<b>-</b>	<b>-</b>	<b>7,477</b>	<b>1,230</b>	<b>60</b>	<b>8,767</b>	<b>N/A</b>
Border Pass	24,720	25,407	-	-	6,032	1,230	60	7,322	N/A
Passport	5,816	7,275	-	-	1,445	-	-	1,445	N/A
<b>Sravanh</b>	<b>9,964</b>	<b>11,506</b>	<b>64</b>	<b>44</b>	<b>3,378</b>	<b>5</b>	<b>-</b>	<b>3,491</b>	<b>N/A</b>
Border Pass	1,897	3,853	-	10	1,078	-	-	1,088	N/A
Passport	8,067	7,653	64	34	2,300	5	-	2,403	N/A

**Table 17: Domestic Tourism from 2016 – 2021**

Province	2016	2017	2018	2019	2020	2021
<b>Grand Total</b>	<b>1,986,738</b>	<b>2,236,914</b>	<b>2,818,576</b>	<b>2,350,851</b>	<b>1,581,100</b>	<b>828,592</b>
Attapeu	27,571	28,840	85,549	66,793	41,247	16,585
Bokeo	42,561	48,565	53,020	52,442	17,932	6,058
Bolikhamxay	60,875	60,950	73,115	134,169	68,926	28,228
Champasak	399,692	479,838	329,609	292,093	25,122	73,455
Houaphanh	12,642	17,707	30,682	23,401	12,226	11,318
Khammouane	163,799	135,516	140,336	149,078	274,122	203,516
Luang Namtha	14,754	242,883	182,392	40,549	36,955	23,586
Luang Prabang	173,733	182,470	178,409	221,934	133,212	69,731
Oudomxay	78,148	71,597	82,063	112,118	93,525	118,469
Phongsaly	40,063	60,807	-	8,623	39,910	29,418
Saravanh	65,025	66,700	73,383	82,450	17,294	20,653
Savannakhet	335,279	341,364	369,840	476,697	434,325	55,269
Sekong	13,121	10,764	26,409	53,559	38,289	17,266
Vientiane Capital	65,680	55,953	706,677	144,232	10,504	4,698
Vientiane Province	363,061	353,874	357,836	382,139	261,562	104,599
Xaisomboun	19,022	15,272	19,569	17,465	15,175	10,215
Xaiyabouli	99,892	15,928	42,229	29,222	17,923	9,988
Xieng Khouang	11,820	47,886	67,458	63,887	42,851	25,540

## Domestic Tourism Situation in 2021

From January to December 2021, there were 828,592 domestic tourists traveling across the country, which suffered a decrease of -47.6% compared to 2020, generating the revenue of 1,102,275,937,600 LAK, which dropped - 5% compared to the same period of last year. The provinces with the highest number of domestic tourists in 2021 were Khammouane, Oudomxay, Vientiane province and other respectively.

The overview of “Lao Thiew Laos” despite being affected by the outbreak of COVID-19, the domestic tourism situation has been steadily improving as the government has reduced the travel control measures, allowing the tourism business to reopen up their businesses such as hotels, guesthouses, restaurants and tourist attractions.

## Lao Tourism Potential

- **Domestic Tourist Visitor:** it can be identified as a short / medium / long term strategy. In addition, promoting the domestic tourism is the main priority area that International Organizations will provide the financial support to Lao PDR in 2022. With the Lao-China Railway and the Vientiane Capital – Vang Vieng Highway, it expects to generate the huge amount of income from domestic tourism.
- **Green Tourism:** Lao PDR is full of the natural attractions from the north to the south, including waterfalls, scenic views, tree houses, home stay, lodging, etc. According to the World Health Organization (WHO) mentioned that the ecotourism puts people at less risk of contracting with the COVID-19 due to the body is exposed to fresh air and it help to avoids the crowds. From the statistic showed that tourists from China, Korea, Thailand and Vietnam are very interested in eco-tourism.
- **International Tourist Visitor:** the welcoming of tourists and the opening of the Lao-China railway will be able to attract more tourists and investors from the People's Republic of China to come to Laos.
- **Lao-Thiew-Lao:** through this campaign and the tourism facilities mentioned above, it estimates that the number of domestic tourists will increase significantly in 2022.

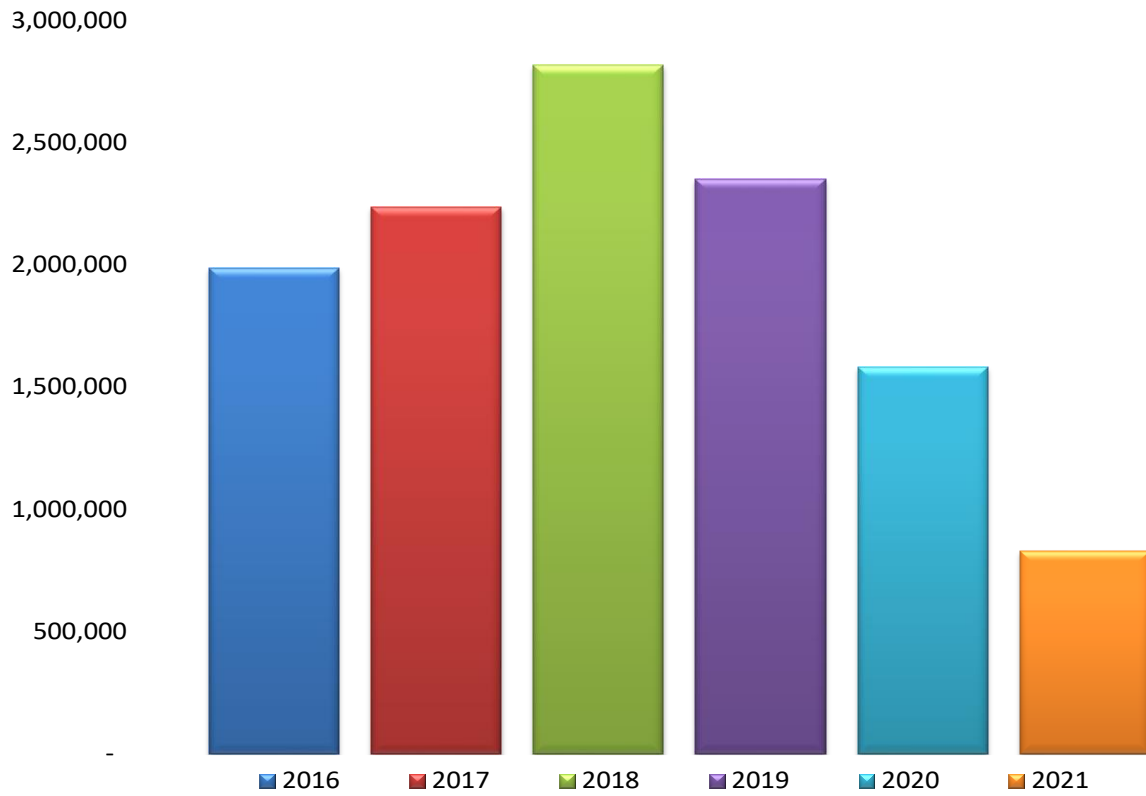
With the official launching of the Lao - China Railway, the highway from Vientiane to Vang Vieng and the reopening of the country (officially receiving the international visitors) it would attract both international and domestic visitors to visit Lao PDR and this could help to boost up and recover the Lao economy for the 2022.



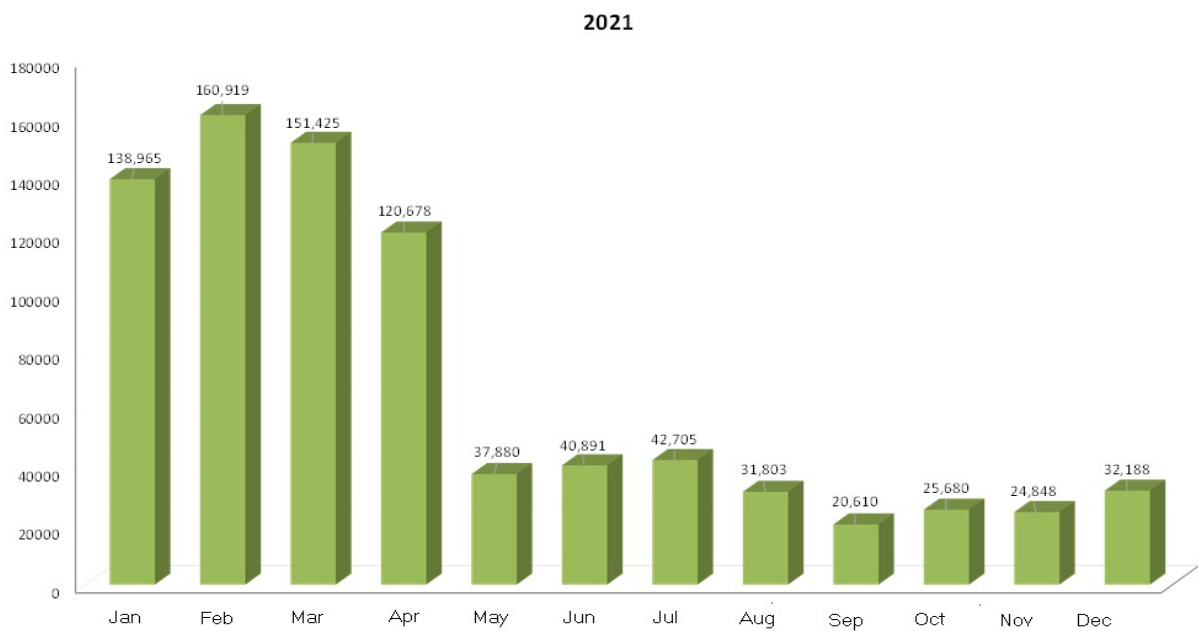
**Table 18: Domestic Tourism Arrivals in Province by Month 2021**

Province	2021												Grand
	Jan	Feb	Mar	Apr	May	Jun	Jul	Aug	Sep	Oct	Nov	Dec	Total
<b>Total</b>	<b>138,965</b>	<b>160,919</b>	<b>151,425</b>	<b>120,678</b>	<b>37,880</b>	<b>40,891</b>	<b>42,705</b>	<b>31,803</b>	<b>20,610</b>	<b>25,680</b>	<b>24,848</b>	<b>32,188</b>	<b>828,592</b>
Attapeu	5,369	4,081	4,005	1,663	-	278	363	381	445	-	-	-	16,585
Bokeo	428	983	1,271	669	646	436	719	350	247	132	82	95	6,058
Bolikhamxay	6,114	5,235	5,445	5,692	523	377	1,217	1,317	1,300	102	371	535	28,228
Champasak	16,786	19,846	17,376	-	-	-	-	-	-	6,169	6,477	6,801	73,455
Houaphanh	1,961	1,896	2,873	2,168	61	245	393	741	304	293	105	278	11,318
Khammouane	31,763	32,523	32,569	36,784	-	20,394	17,068	7,310	-	3,451	10,827	10,827	203,516
Luang Namtha	3,548	2,701	3,247	3,027	2,670	2,372	2,297	2,372	1,352	-	-	-	23,586
Luang Prabang	14,237	12,718	11,916	14,138	12,581	-	72	1,090	1,990	680	-	309	69,731
Oudomxay	16,544	16,333	17,870	15,960	442	5,335	9,775	8,427	7,673	7,896	2,731	9,483	118,469
Phongsaly	6,032	4,202	6,065	4,780	928	52	1,048	2,057	1,544	1,350	38	1,322	29,418
Saravanh	2,210	3,196	7,835	356	530	817	1,002	1,100	1,220	680	847	860	20,653
Savannakhet	10,261	21,975	12,428	6,537	238	314	2,167	-	-	325	1,024	-	55,269
Sekong	4,310	5,223	1,217	2,400	942	845	576	633	1,120	-	-	-	17,266
Vientiane Capital	1,427	440	813	314	130	250	709	165	11	40	214	185	4,698
Vientiane Province	10,790	19,251	17,158	18,206	17,650	7,656	2,022	1,991	2,795	4,562	1,614	904	104,599
Xaisomboun	1,261	1,459	1,789	1,224	494	516	516	1,240	609	-	518	589	10,215
Xaiyabouli	1,010	3,777	3,174	975	45	383	545	79	-	-	-	-	9,988
Xieng Khouang	4,914	5,080	4,374	5,785	-	621	2,216	2,550	-	-	-	-	25,540

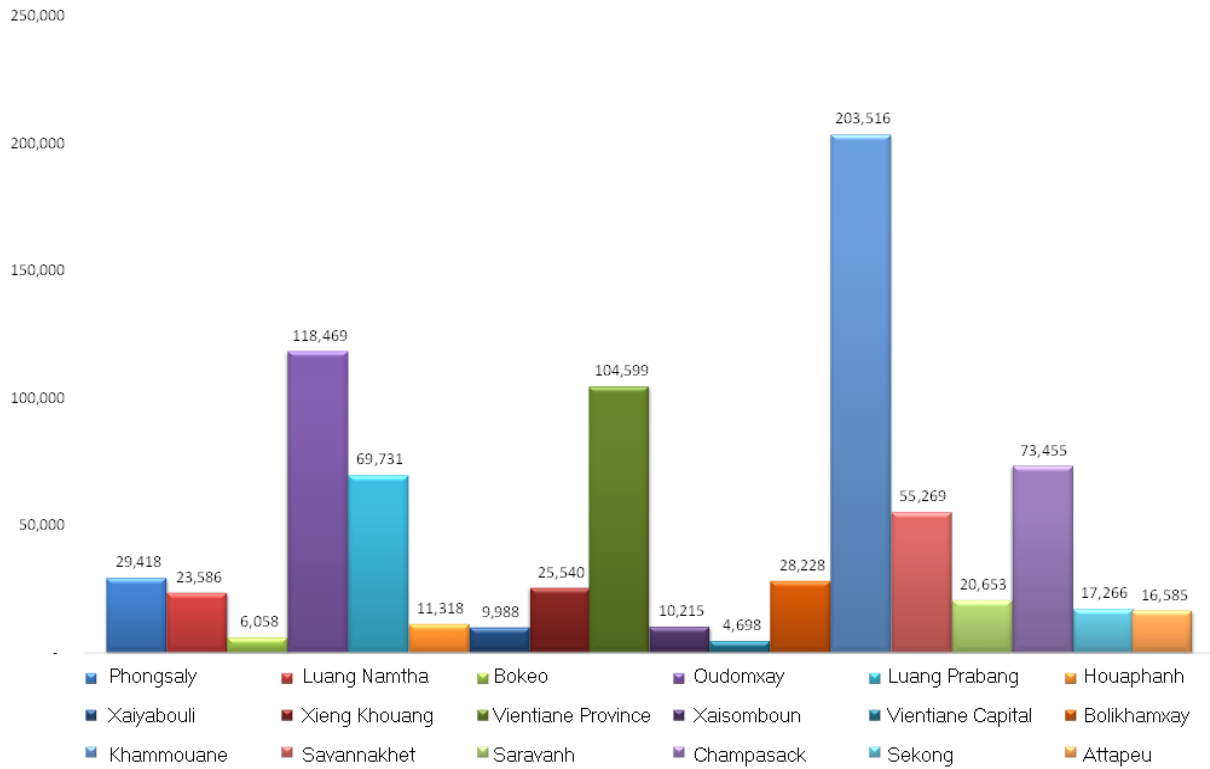
**Graph 1: Number of Domestic Tourist Arrivals in 2021**



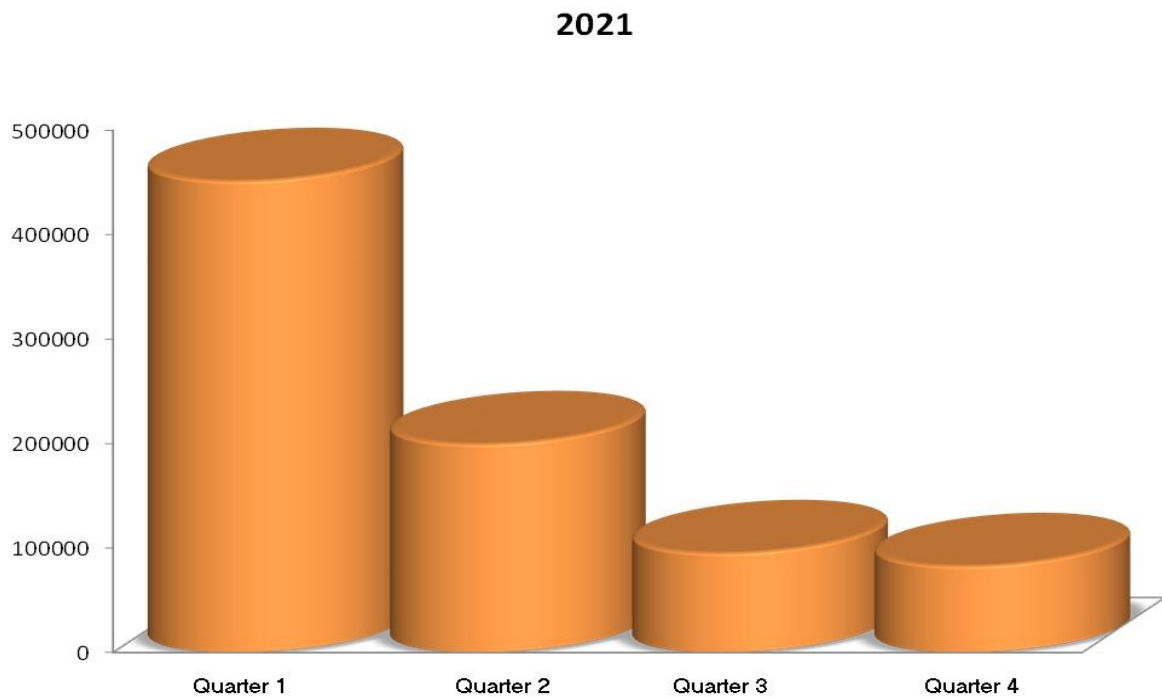
**Graph 2: Number of Domestic Tourist Arrivals by Month in 2021**



**Graph 3: Number of Domestic Tourist Arrivals by Province in 2021**



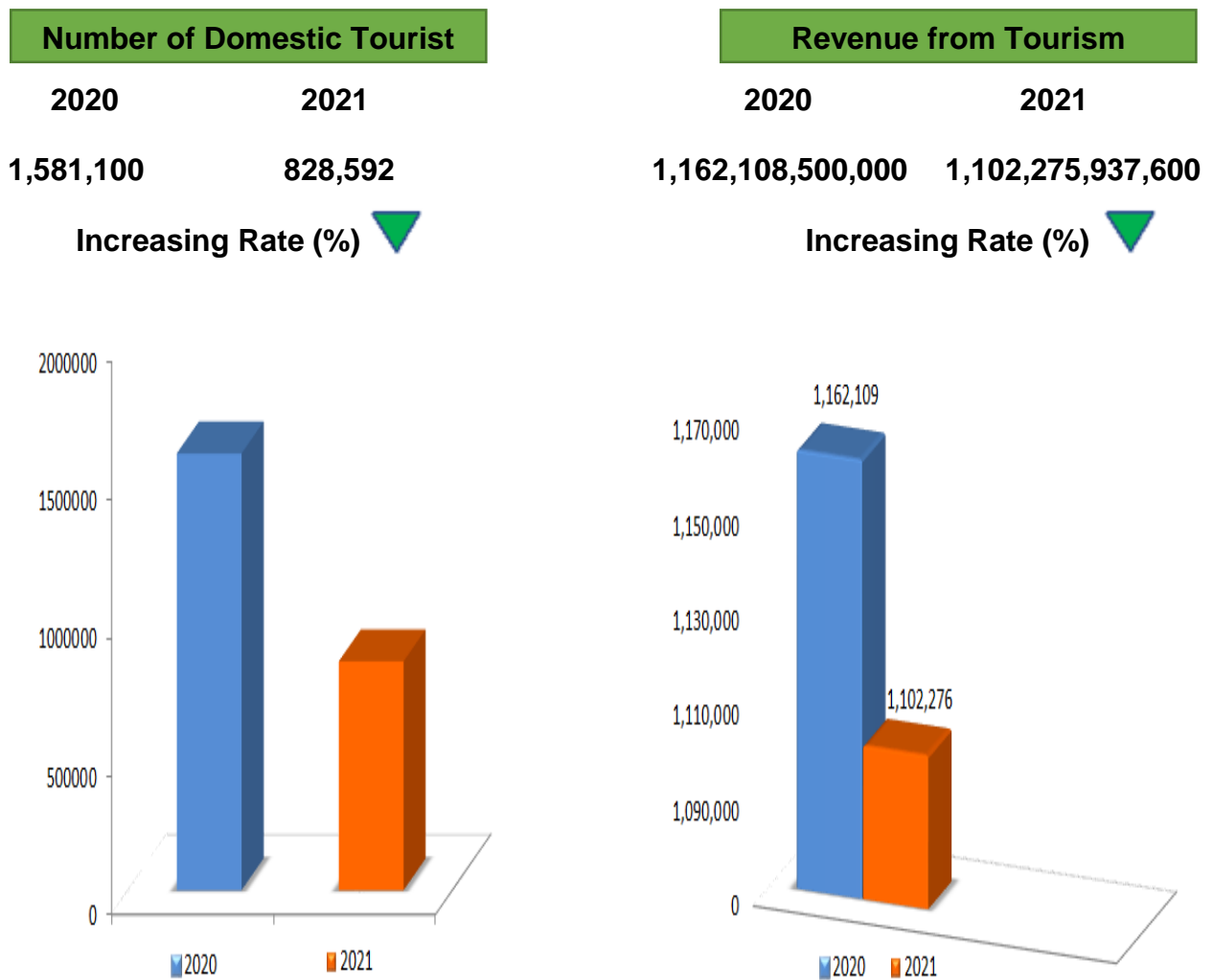
**Graph 4: Number of Domestic Tourist Arrivals by Quarter in 2021**



**Table 19: Income Generating from Tourism in 2021**

Year	Number of Domestic Tourists	Average Length of Stay (days)	Average Expenditure per Person per day (LAK)	Average Expenditure per Person per day (USD)	Revenue from Tourism (LAK)	Revenue from Tourism (USD)
2020	1,581,100	3	245,000	26	1,162,108,500,000	122,740,653
2021	828,592	2.51	530,000	45	1,102,275,937,600	93,589,466

**Graph 5: Increasing rate and Income from the Domestic Tourism**



**Table 20: Number of Hotels, Guesthouses, Resorts, Restaurants and Entertainment Establishments in 2021**

Province	Type										Total 2021
	Hotel	Guest House	Resort	Apartment	Food Garden	Cabaret	Restaurant	Eatery	Entertainment	Karaoke	
<b>Total</b>	<b>704</b>	<b>2401</b>	<b>120</b>	<b>36</b>	<b>28</b>	<b>34</b>	<b>2084</b>	<b>1428</b>	<b>163</b>	<b>111</b>	<b>7109</b>
Attapeu	22	34	1	0	0	1	56	44	3	0	161
Bokeo	20	68	6	0	3	1	69	0	2	5	174
Bolikhamxay	34	89	4	0	0	1	173	98	3	8	410
Champasack	72	220	7	0	1	0	233	197	6	13	749
Houaphanh	11	72	1	0	0	2	121	77	1	0	285
Khammouane	25	104	9	0	2	0	138	158	4	9	449
Luang Namtha	9	99	2	0	3	4	85	72	5	0	279
Luang Prabang	81	406	14	0	0	4	352	0	47	10	914
Oudomxay	22	121	7	0	5	2	108	159	6	22	452
Phongsaly	9	56	0	0	0	5	61	56	3	0	190
Saravanh	8	52	1	0	0	0	50	66	4	0	181
Savannakhet	48	173	2	0	0	5	181	0	7	5	421
Sekong	9	34	0	0	6	0	16	29	2	0	96
Vientiane Capital	259	203	29	36	4	5	124	0	20	26	706
Vientiane Province	46	324	29	0	0	0	70	297	31	10	807
Xaisomboun	3	60	0	0	0	0	52	57	1	0	173
Xaiyabouli	7	161	5	0	0	0	84	38	16	0	311
Xieng Khouang	19	125	3	0	4	4	111	80	2	3	351

**Table 21: Number of Accommodation Establishments, and Rooms 2017-2021**

Province	Number of Establishments					Number of Rooms				
	2017	2018	2019	2020	2021	2017	2018	2019	2020	2021
<b>Grand Total</b>	<b>2,734</b>	<b>3,102</b>	<b>2,920</b>	<b>3,237</b>	<b>3,261</b>	<b>50,600</b>	<b>56,825</b>	<b>55,541</b>	<b>56,347</b>	<b>60,840</b>
Attapeu	59	54	56	56	57	960	1,013	823	873	940
Bokeo	85	86	90	87	94	1,332	1,297	1,412	1,536	1,516
Bolikhamxay	126	160	159	128	127	2,388	2,884	2,913	2,314	2,365
Champasack	235	285	283	297	299	4,059	5,182	3,793	4,995	5,165
Houaphanh	68	74	73	84	84	883	956	984	1,038	1,072
Khammouane	135	139	139	138	138	2,174	2,261	2,286	1,824	2,333
Luang Namtha	107	105	110	109	110	1,545	1,519	1,509	1,837	1,802
Luang Prabang	313	477	348	491	501	5,368	5,276	6,746	6,447	6,799
Oudomxay	107	134	130	146	150	1,906	2,271	2,231	2,224	2,507
Phongsaly	71	73	74	80	65	746	905	915	1,154	973
Saravane	54	58	55	62	61	517	814	816	840	868
Savannakhet	205	223	210	222	223	4,521	4,482	4,686	4,362	4,479
Sekong	52	46	44	47	43	628	599	706	619	609
Vientiane Capital	459	483	452	476	527	13,030	14,244	14,013	14,066	16,372
Vientiane Province	312	344	340	404	399	5,592	6,203	6,372	6,370	7,017
Xaisomboun	38	45	38	60	63	336	475	336	575	713
Xaiyabouli	181	173	185	192	173	2,257	2,343	2,557	2,422	2,533
Xieng Khouang	127	143	134	158	147	2,358	4,101	2,443	2,851	2,777



**Table 22: Number of Hotels, Guesthouses, Resort, Rooms, and Beds, in 2021**

Province	Hotel			Guest House			Resort			Apartment			Total		
	No.	Room	Bed	No.	Room	Bed	No.	Room	Bed	No.	Room	Bed	No.	Room	Bed
<b>Total</b>	<b>704</b>	<b>26,968</b>	<b>36,117</b>	<b>2,401</b>	<b>30,237</b>	<b>36,833</b>	<b>120</b>	<b>2,618</b>	<b>3,251</b>	<b>36</b>	<b>1,017</b>	<b>1,197</b>	<b>3,261</b>	<b>60,840</b>	<b>77,398</b>
Attapeu	22	650	955	34	263	347	1	27	35	-	-	-	57	940	1,337
Bokeo	20	791	1,102	68	645	1,074	6	80	94	-	-	-	94	1,516	2,270
Bolikhamxay	34	1,024	1,413	89	1,290	1,657	4	51	60	-	-	-	127	2,365	3,130
Champasack	72	2,746	3,366	220	2,261	2,844	7	158	232	-	-	-	299	5,165	6,442
Houaphanh	11	242	392	72	823	1,134	1	7	7	-	-	-	84	1,072	1,533
Khammouane	25	912	1,222	104	1,234	1,558	9	187	250	-	-	-	138	2,333	3,030
Luang Namtha	9	455	623	99	1,316	1,318	2	31	41	-	-	-	110	1,802	1,982
Luang Prabang	81	2,443	3,724	406	4,122	5,497	14	234	468	-	-	-	501	6,799	9,689
Oudomxay	22	880	1,275	121	1,403	1,858	7	224	274	-	-	-	150	2,507	3,407
Phongsaly	9	340	514	56	633	714	-	-	-	-	-	-	65	973	1,228
Saravane	8	217	308	52	646	946	1	5	11	-	-	-	61	868	1,265
Savannakhet	48	2,115	2,847	173	2,261	2,595	2	103	189	-	-	-	223	4,479	5,631
Sekong	9	246	322	34	363	430	-	-	-	-	-	-	43	609	752
Vientiane Capital	259	10,407	13,324	203	4,379	4,907	29	569	615	36	1,017	1,197	527	16,372	20,043
Vientiane Province	46	2,407	3,173	324	3,786	4,343	29	824	833	-	-	-	399	7,017	8,349
Xaisomboun	3	45	60	60	668	768	-	-	-	-	-	-	63	713	828
Xaiyabouli	7	241	340	161	2,220	2,500	5	72	78	-	-	-	173	2,533	2,918
Xieng Khouang	19	807	1,157	125	1,924	2,343	3	46	64	-	-	-	147	2,777	3,564

**Table 23: Occupancy Rate in each Province from 2014-2021**

Province	2014	2015	2016	2017	2018	2019	2020	2021
<b>Average</b>	<b>54%</b>	<b>57%</b>	<b>51%</b>	<b>54%</b>	<b>53%</b>	<b>54%</b>	<b>N/A</b>	<b>N/A</b>
Attapeu	43%	52%	39%	41%	44%	54%	N/A	N/A
Bokeo	44%	56%	47%	50%	51%	67%	N/A	N/A
Bolikhamxay	42%	45%	42%	45%	46%	47%	N/A	N/A
Champasack	55%	56%	45%	56%	53%	49%	N/A	N/A
Houaphanh	45%	51%	43%	46%	41%	40%	N/A	N/A
Khammouane	75%	71%	75%	72%	75%	57%	N/A	N/A
Luang namtha	57%	56%	30%	48%	54%	64%	N/A	N/A
Luang Prabang	71%	73%	75%	71%	70%	69%	N/A	N/A
Oudomxay	50%	56%	52%	54%	56%	65%	N/A	N/A
Phongsaly	40%	46%	39%	44%	41%	47%	N/A	N/A
Saravanh	48%	53%	65%	69%	53%	52%	N/A	N/A
Savannakhet	69%	71%	53%	54%	57%	53%	N/A	N/A
Sekong	55%	48%	47%	52%	42%	51%	N/A	N/A
Vientiane Capital	73%	74%	56%	59%	62%	59%	N/A	N/A
Vientiane province	60%	65%	62%	65%	63%	61%	N/A	N/A
Xaisomboun	49%	48%	45%	43%	45%	46%	N/A	N/A
Xayabouli	41%	47%	44%	46%	44%	41%	N/A	N/A
Xieng Khouang	54%	56%	53%	57%	55%	51%	N/A	N/A

**Table 24: Tourist Arrivals to Luang Prabang Province from 2017-2021**

Region	Country	2017		2018		2019		2020		% ▽	2021
<b>Grand Total</b>		<b>655,412</b>		<b>755,019</b>		<b>860,035</b>		<b>275,647</b>		<b>-68</b>	<b>69,731</b>
<b>Laos</b>		<b>182,470</b>		<b>178,409</b>		<b>221,934</b>		<b>133,212</b>		<b>-40</b>	<b>69,731</b>
<b>Foreigner</b>		<b>472,942</b>	<b>100%</b>	<b>576,610</b>	<b>100%</b>	<b>638,101</b>	<b>100%</b>	<b>142,435</b>	<b>100%</b>	<b>-78</b>	<b>NA</b>
<b>ASEAN</b>		<b>73,719</b>	<b>15.59</b>	<b>84,827</b>	<b>14.71</b>	<b>105,496</b>	<b>16.53</b>	<b>31,471</b>	<b>22.09</b>	<b>-70</b>	<b>NA</b>
	Brunei	56	0.01	62	0.01	248	0.04	38	0.03	<b>-85</b>	NA
	Cambodia	737	0.16	290	0.05	882	0.14	325	0.23	<b>-63</b>	NA
	Indonesia	146	0.03	150	0.03	1,454	0.23	382	0.27	<b>-74</b>	NA
	Malaysia	124	0.03	349	0.06	4,884	0.77	1,146	0.80	<b>-77</b>	NA
	Myanmar	454	0.10	166	0.03	481	0.08	336	0.24	<b>-30</b>	NA
	Philippines	153	0.03	317	0.05	3,050	0.48	541	0.38	<b>-82</b>	NA
	Singapore	162	0.03	226	0.04	6,985	1.09	2,348	1.65	<b>-66</b>	NA
	Thailand	64,372	13.61	75,035	13.01	77,892	12.21	24,418	17.14	<b>-69</b>	NA
	Vietnam	7,515	1.59	8,232	1.43	9,620	1.51	1,937	1.36	<b>-80</b>	NA
<b>Asia and Pacific</b>		<b>136,530</b>	<b>28.87</b>	<b>171,726</b>	<b>29.78</b>	<b>188,725</b>	<b>29.58</b>	<b>44,173</b>	<b>31.01</b>	<b>-77</b>	<b>NA</b>
	Australia	15,883	3.36	18,719	3.25	19,301	3.02	3,440	2.42	<b>-82</b>	NA
	China	66,392	14.04	81,052	14.06	90,567	14.19	19,926	13.99	<b>-78</b>	NA
	India	247	0.05	304	0.05	3,598	0.56	1,580	1.11	<b>-56</b>	NA
	Japan	17,930	3.79	19,213	3.33	19,312	3.03	7,015	4.93	<b>-64</b>	NA
	Korea (Rep)	34,578	7.31	38,470	6.67	38,531	6.04	2,666	1.87	<b>-93</b>	NA
	New Zealand	257	0.05	616	0.11	2,729	0.43	305	0.21	<b>-89</b>	NA
	Taiwan	1,189	0.25	3,261	0.57	4,351	0.68	1,192	0.84	<b>-73</b>	NA
	Others	54	0.01	10,091	1.75	10,336	1.62	8,049	5.65	<b>-22</b>	NA
<b>Europe</b>		<b>178,784</b>	<b>37.80</b>	<b>215,322</b>	<b>37.34</b>	<b>213,850</b>	<b>33.51</b>	<b>41,261</b>	<b>28.97</b>	<b>-81</b>	<b>NA</b>
	Austria	3,415	0.72	4,549	0.79	4,738	0.74	1,031	0.72	<b>-78</b>	NA
	Belgium	1,127	0.24	1,248	0.22	4,190	0.66	1,133	0.80	<b>-73</b>	NA
	Denmark	3,582	0.76	3,887	0.67	3,965	0.62	912	0.64	<b>-77</b>	NA
	Finland	4,530	0.96	5,616	0.97	5,732	0.90	667	0.47	<b>-88</b>	NA
	France	31,468	6.65	33,480	5.81	33,592	5.26	7,170	5.03	<b>-79</b>	NA
	Germany	30,749	6.50	32,291	5.60	32,561	5.10	6,342	4.45	<b>-81</b>	NA
	Greece	859	0.18	946	0.16	834	0.13	349	0.25	<b>-58</b>	NA
	Italy	13,156	2.78	15,673	2.72	16,055	2.52	3,389	2.38	<b>-79</b>	NA
	Netherlands	8,953	1.89	9,725	1.69	10,601	1.66	1,885	1.32	<b>-82</b>	NA
	Norway	4,382	0.93	4,697	0.81	4,732	0.74	1,011	0.71	<b>-79</b>	NA
	Russia	14,874	3.14	16,810	2.92	17,384	2.72	238	0.17	<b>-99</b>	NA
	Spain	7,147	1.51	8,713	1.51	8,792	1.38	1,618	1.14	<b>-82</b>	NA
	Sweden	4,899	1.04	5,972	1.04	5,923	0.93	1,070	0.75	<b>-82</b>	NA
	Switzerland	9,367	1.98	9,757	1.69	9,538	1.49	2,113	1.48	<b>-78</b>	NA
	United Kingdom	33,965	7.18	34,795	6.03	35,007	5.49	4,924	3.46	<b>-86</b>	NA
	Others	6,311	1.33	27,163	4.71	20,206	3.17	7,409	5.20	<b>-63</b>	NA
<b>Americas</b>		<b>74,407</b>	<b>15.73</b>	<b>90,926</b>	<b>15.77</b>	<b>115,682</b>	<b>18.13</b>	<b>23,425</b>	<b>16.45</b>	<b>-80</b>	<b>NA</b>
	Canada	21,937	4.64	22,497	3.90	25,973	4.07	3,323	2.33	<b>-87</b>	NA
	USA	29,178	6.17	34,280	5.95	57,020	8.94	13,282	9.32	<b>-77</b>	NA
	Others	23,292	4.92	34,149	5.92	32,689	5.12	6,820	4.79	<b>-79</b>	NA
<b>Africa and Middle East</b>		<b>9,502</b>	<b>2.01</b>	<b>13,809</b>	<b>2.39</b>	<b>14,348</b>	<b>2.25</b>	<b>2,105</b>	<b>1.48</b>	<b>-85</b>	<b>NA</b>
	Israel	5,324	1.13	5,791	1.00	5,130	0.80	692	0.49	<b>-87</b>	NA
	Others	4,178	0.88	8,018	1.39	9,218	1.44	1,413	0.99	<b>-85</b>	NA

## Part II: Domestic Visitor Survey

The results in this section of the report relate to information obtained from 1,125 domestic visitors surveyed during the period March - December 2021 at the Wattay International Airport (Vientiane Capital), Luang Prabang International Airport (Luang Prabang), Pakse International Airport (Champasack) and Vientiane Province. The Domestic visitors who were randomly interviewed represent all tourist arrivals to Provinces.

From the survey conducted by Tourism Development Department, it could be seen that there were more female tourist visitors than male in 2020, but in 2021 there was more male tourist visitors. In 2020, 47% of the visitors were in the age between 20-29 years old while in 2021 was the age between 30-39 years old which accounted for 37.2%. Most of the domestic tourists were working as the private sector workers, housewives, government officials and students. The top three purposes of the traveling were leisure, attending meetings and visiting family.

In addition, the average of income from the domestic tourists was 3 - 4 million LAK/ month for 2020 and more than 6 million LAK/ month in 2021. It also mentioned that in 2020, most tourists traveled by their private car, which accounted for 67.1% and up to 90% in 2021. The group traveler was the highest among other types in 2020 (46.7%) and in 2021, the trend was changed since 46.1% of visitors traveled with their family.

Moreover, 45.7% of the domestic tourists prefer to stay in guesthouse in 2020. However, 49% was reported staying at 'various places' in 2021. The average expenditure of domestic tourists in 2020 was between 2-3 million LAK, while in 2021 was less than 500,000 LAK and the average length of stay was 3 days.

**Table 25: Characteristics of Domestic Tourist Arrivals to Laos from 2020-2021**

CHARACTERISTIC	2020	2021
<b>GENDER</b>	<b>100%</b>	<b>100%</b>
Male	43.7	57.2
Female	56.3	42.8
<b>AGE</b>	<b>100%</b>	<b>100%</b>
15 - 19 years old	7.0	10.1
20 - 29 years old	47.0	33.9
30 - 39 years old	28.0	37.2
40 - 49 years old	15.0	16.7
50 - 59 years old	2.0	2.0
Over 60 years old	1.0	0.1
<b>OCCUPATION</b>	<b>100%</b>	<b>100%</b>
Government Officials	26.6	15.8
Private Sector	26.4	33.9
Student	10.4	33.5
Housewife	32.1	13.6
Retired Staff	1.7	0.8
Trading/ Entrepreneur	2.4	0.4
Others	0.4	2.0
<b>PURPOSE OF VISIT</b>	<b>%</b>	<b>%</b>
Leisure	84.7	87.4
Business	6.0	7.7
Visit family	6.7	19.4
Official, convention and seminar	8.5	10.0
Education/ Field Trip		0.2
Treatment	0.7	2.0
Religion	0.6	3.0
Others	0.3	1.2
<b>MONTHLY INCOME</b>	<b>100%</b>	<b>100%</b>
Less than 1,000,000 LAK	19.3	13.7
1,000,001 - 2,000,000 LAK	10.2	4.4
2,000,001 - 3,000,000 LAK	14.2	12.2
3,000,001 - 4,000,000 LAK	19.5	16.6
4,000,001 - 5,000,000 LAK	9.2	11.2
5,000,001 - 6,000,000 LAK	12.4	18.4
More than 6,000,000 LAK	15.2	23.6

CHARACTERISTIC	2020	2021
<b>TYPE OF TRANSPORTATION</b>	<b>%</b>	<b>%</b>
Airplane	22.1	9.3
Bus	9.0	3.9
Private car	67.1	90.0
Tour bus	1.2	1.3
Boat	2.2	0.9
Others	0.6	2.0
<b>PERSONS ACCOMPANIED WITH</b>	<b>%</b>	<b>%</b>
Alone	13.6	9.0
Family	39.0	46.1
Spouse/partner	-	7.4
Colleague	-	21.7
Friend	46.7	25.6
Others	0.9	2.4
<b>TYPE OF ACCOMMODATION</b>	<b>%</b>	<b>%</b>
Hotel	26.4	33.4
Guest House	45.7	11.2
Private house	24.6	10.3
Relative's house	-	5.2
Others	3.3	49.0
<b>AVERAGE EXPENDITURE</b>	<b>100%</b>	<b>100%</b>
Less than 500,000	22.3	45.0
500,001 - 1,000,000	13.3	17.8
1,000,001-2,000,000	21.4	17.5
2,000,001-3,000,000	24.0	10.8
3,000,001-4,000,000	9.7	4.4
4,000,001-5,000,000	5.9	1.1
More than 5,000,000	3.4	3.5
<b>AVERAGE LENGTH OF STAY (DAYS)</b>	<b>3</b>	<b>2.51</b>

## Part III: Tourism Statistics Projection

**Table 26: Number of Tourist Arrivals, Revenue from Tourism, Average Length of Stay from 2022-2025**

Year	Number of Tourist Arrivals	Revenue from Tourism (Dollars)	Average Length of Stay (Days) for international tourists	Remark
1993	102,946	6,280,000	3.5	
1994	146,155	7,557,600	5.1	
1995	346,460	24,738,480	4.3	
1996	403,000	43,592,263	4.1	
1997	463,200	73,276,904	5.0	
1998	500,200	79,960,145	5.0	
1999	614,278	97,265,324	5.5	
2000	737,208	113,898,285	5.5	
2001	673,823	103,786,323	8.0	
2002	735,662	113,409,883	6.5	
2003	636,361	87,302,412	6.0	
2004	894,806	118,947,707	6.5	
2005	1,095,315	146,770,074	7.0	
2006	1,215,106	173,249,896	7.0	
2007	1,623,943	233,304,695	7.0	
2008	1,736,787	275,515,758	6.5	
2009	2,008,363	267,700,224	7.0	
2010	2,513,028	381,669,031	7.0	
2011	2,723,564	406,184,338	7.0	
2012	3,330,072	506,022,586	7.2	
2013	3,779,490	595,909,127	8.4	
2014	4,158,719	641,636,543	7.9	
2015	4,684,429	725,365,681	7.5	
2016	4,239,047	724,191,957	7.57	
2017	3,868,838	648,067,008	8.39	
2018	4,186,432	811,010,661	7.99	
2019	4,791,065	934,710,409	7.93	
2020	886,447	213,367,141	7.93	
2021	NA	NA	NA	
2022	900,000	218,050,440	7.93	Estimated
2023	1,403,474	340,031,247	7.93	Estimated
2024	2,367,280	573,540,494	7.93	Estimated
2025	3,214,381	778,774,655	7.93	Estimated



**Table 27: International Tourist Arrivals Forecast by Month from 2022-2025**

Year	Jan	Feb	Mar	Apr	May	Jun	Jul	Aug	Sep	Oct	Nov	Dec	Total
2005	77,093	81,766	113,722	100,477	83,665	96,140	67,878	85,940	77,694	99,437	100,217	111,286	1,095,315
2006	111,917	112,520	104,675	99,928	94,017	85,016	79,525	93,045	86,762	108,720	111,747	127,234	1,215,106
2007	150,853	140,238	137,463	117,805	141,771	117,741	121,541	127,687	126,071	152,366	139,478	150,929	1,623,943
2008	158,776	149,744	140,256	142,321	150,314	149,299	133,355	122,636	128,427	134,943	158,673	168,043	1,736,787
2009	186,668	176,596	154,059	101,288	117,754	140,929	161,055	156,239	178,194	191,697	190,132	253,752	2,008,363
2010	229,032	196,746	210,337	224,753	179,168	140,929	182,876	201,273	195,318	220,925	237,692	265,613	2,484,662
2011	265,367	237,554	257,454	221,854	266,080	237,153	244,181	219,440	209,259	182,671	192,683	189,868	2,723,564
2012	298,227	283,945	285,583	314,494	287,100	267,306	213,953	238,725	228,186	275,948	347,212	289,393	3,330,072
2013	345,411	350,459	308,847	331,717	297,038	273,152	297,439	308,065	280,235	326,579	331,823	328,725	3,779,490
2014	367,980	384,664	360,675	366,610	339,580	232,400	316,631	304,725	368,666	382,064	365,824	368,900	4,158,719
2015	436,358	426,697	421,841	416,628	325,095	298,970	337,805	358,358	461,921	400,054	420,650	380,052	4,684,429
2016	400,140	450,902	396,975	363,538	343,162	296,272	296,242	323,603	302,981	336,863	367,964	360,405	4,239,047
2017	339,764	350,380	355,217	346,559	314,344	298,306	278,971	280,983	262,464	325,574	358,997	357,280	3,868,838
2018	358,248	347,227	362,221	376,133	339,165	344,286	282,602	386,911	295,293	348,281	352,225	393,840	4,186,432
2019	331,524	337,356	393,497	404,945	392,491	368,646	418,537	437,586	362,005	413,251	473,648	457,579	4,791,065
2020	351,104	345,900	189,443										886,447
2021	NA	NA	NA	NA	NA	NA	NA	NA	NA	NA	NA	NA	NA
2022	79,511	78,912	78,443	76,997	71,935	65,582	67,267	71,435	69,832	76,416	81,306	82,364	900,000
2023	123,991	123,057	122,325	120,070	112,176	102,269	104,899	111,396	108,898	119,163	126,791	128,439	1,403,474
2024	209,139	207,564	206,328	202,526	189,211	172,500	176,935	187,895	183,682	200,996	213,861	216,643	2,367,280
2025	283,977	281,838	280,160	274,997	256,918	234,227	240,249	255,131	249,410	272,921	290,389	294,164	3,214,381

**Table 28: Number of Tour Operators in Lao PDR from 2017-2021**

Province	Number of Travel Agents					Number of Branch Travel Agents				
	2017	2018	2019	2020	2021	2017	2018	2019	2020	2021
<b>Total</b>	<b>422</b>	<b>503</b>	<b>539</b>	<b>549</b>	<b>549</b>	<b>45</b>	<b>36</b>	<b>36</b>	<b>34</b>	<b>32</b>
Attapeu	3	3	3	3	3	0	0	0	0	0
Bokeo	17	15	15	15	15	1	1	1	1	1
Bolikhamxay	4	4	6	6	6	0	0	0	0	0
Champasack	30	32	27	27	27	7	7	7	7	7
Houaphanh	2	2	2	2	2	0	0	0	0	0
Khammouane	5	6	6	5	5	2	1	1	0	0
Luang Namtha	7	7	7	9	9	1	1	1	1	1
Luang Prabang	67	78	81	81	81	20	17	16	16	14
Oudomxay	3	3	5	5	5	0	0	0	0	0
Phongsaly	1	3	2	2	2	1	0	0	0	0
Saravane	2	2	2	2	2	0	0	0	0	0
Savannakhet	11	11	10	10	10	0	0	0	0	0
Sekong	0	0	0	0	0	0	0	0	0	0
Vientiane Capital	238	292	317	327	327	8	3	5	4	4
Vientiane Province	18	25	32	32	32	2	3	3	3	3
Xaisomboun	0	0	0	0	0	0	0	0	0	0
Xaiyabouli	8	12	16	15	15	0	0	0	0	0
Xieng Khouang	6	8	8	8	8	3	3	2	2	2

**Table 29: Number of Tourist Attractions/ Sites in Laos in 2021**

Province	Natural sites	Cultural sites	Historical sites	Garand Total	Operated	Registered	Under development
<b>Total</b>	<b>1,314</b>	<b>591</b>	<b>294</b>	<b>2,199</b>	<b>809</b>	<b>1,040</b>	<b>587</b>
Attapeu	33	18	12	63	19	11	7
Bokeo	53	14	10	77	18	40	41
Bolikhamxay	100	12	3	115	30	47	7
Champasak	127	55	35	217	217	13	16
Houaphanh	43	28	62	133	15	83	4
Khammouane	143	33	31	207	28	157	120
Luang Namtha	55	47	7	109	62	68	15
Luang Prabang	114	77	33	224	24	90	25
Oudomxay	54	40	12	106	30	58	46
Phongsaly	27	74	4	105	80	69	7
Saravanh	50	38	6	94	33	90	16
Savannakhet	74	32	11	117	112	24	60
Sekong	19	6	9	34	5	17	14
Vientiane Capital	45	24	15	84	19	11	21
Vientiane Province	171	25	4	200	44	168	165
Xaisomboun	57	5	10	72	4	35	8
Xaiyabouli	70	19	7	96	49	5	13
Xieng Khouang	79	44	23	146	20	54	2

**Table 30: Domestic Tourist Arrivals by Mode of Transportation and Purposes of the visiting from 2020 - 2021**

Year	2020	2021
<b>Grand Total</b>	<b>1,581,100</b>	<b>828,592</b>
<b>TYPE OF TRANSPORTATION</b>		
Airplane	349,423	77,059
Bus	142,299	32,315
Private car	1,060,918	745,733
Tour bus	18,973	10,772
Boat	9,487	7,457
Others		25,686
<b>PURPOSE OF VISIT</b>		
Holiday	1,339,192	724,189
Business	105,934	63,802
Visit family	94,866	160,747
Official, convention and seminar	134,394	82,859
Education		1,657
Therapy	11,068	16,572
Religion	9,487	24,858
Others	4,743	9,943

**Table 31: Number of Homestay in Lao PDR in 2021**

Province	Homestay				
	District	Village	No	Room	Bed
<b>Total</b>	<b>30</b>	<b>39</b>	<b>335</b>	<b>438</b>	<b>1,115</b>
Attapeu	-	-	-	-	-
Bokeo	-	-	-	-	-
Bolikhamxay	2	3	22	28	44
Champasack	4	5	38	66	113
Houaphanh	1	1	2	9	15
Khammouane	3	4	64	75	238
Luang Namtha	1	3	26	34	34
Luang Prabang	2	2	36	36	106
Oudomxay	3	4	33	33	180
Phongsaly	2	2	6	6	24
Saravane	1	1	1	4	4
Savannakhet	4	5	40	61	183
Sekong	1	1	2	5	10
Vientiane Capital	-	-	-	-	-
Vientiane Province	2	2	13	26	52
Xaisomboun	-	-	-	-	-
Xaiyabouli	3	5	50	51	104
Xieng Khouang	1	1	2	4	8

**Table 32: Revenue from Tourism and Major Exports from 2017-2021**

Product	2021		2020		2019		2018		2017	
	Revenue	Rank	Revenue	Rank	Revenue	Rank	Revenue	Rank	Revenue	Rank
<b>Tourism</b>	<b>93.5</b>	<b>7</b>	<b>213.3</b>	<b>5</b>	<b>934.7</b>	<b>4</b>	<b>811.0</b>	<b>4</b>	<b>648.0</b>	<b>4</b>
Garments	190.0	5	192.5	6	213.5	6	193.9	6	182.3	6
Electricity	2,317.3	1	1,976.4	1	1,326.8	3	1,408.1	3	1,280.3	3
Wood Products	42.4	8	27.2	8	58.9	8	184.5	7	48.6	8
Coffee	95.2	6	90.8	7	69.4	7	102.6	8	105.1	7
Agricultural Products	1,155.1	4	1,186.2	4	921.0	5	586.4	5	582.5	5
Minerals	1,701.2	3	1,314.4	3	1,438.0	2	1,439.4	2	1,390.5	1
Handicrafts	12.9	9	4.6	9	54.3	9	18.0	9	3.2	9
Other Industries	2,112.5	2	1,375.7	2	1,781.7	1	1,476.9	1	1,295.0	2

Source : Ministry of Industry and Commerce.

It could be seen that from 2017 to 2020, tourism was one of the top 4 income generating sectors in Lao PDR after the exporting electricity, minerals and other industries before tourism revenue will fall to seventh place in 2021 due to COVID-19 pandemic. The government was taken the measures of lock down the country.

**Table 33: Forecasting of the Domestic Tourist Arrivals, revenue and Average Length of Stay from 2022-2025**

Year	Number of Domestic Tourist Arrivals	Revenue from Tourism (LAK)	Average Length of Stay (Days) for international tourists	Remark
2016	1,986,738	NA	NA	
2017	2,236,914	NA	NA	
2018	2,818,576	NA	NA	
2019	2,350,851	NA	NA	
2020	1,581,100	1,162,108,500,000	3.00	
2021	828,592	1,102,275,937,600	2.51	
2022	1,066,000	1,129,960,000,000	2.00	Estimated
2023	1,291,329	1,368,808,740,000	2.00	Estimated
2024	1,339,277	1,419,633,620,000	2.00	Estimated
2025	1,494,882	1,584,574,920,000	2.00	Estimated

Source of data: Ministry of Information, Culture and Tourism, Tourism Development Department.

## Part IV: Domestic Tourism Stream Survey

The table below shows the results of the weekend tourism survey, which interviewed 1,000 local tourists between September and December 2021 with the high potential tourism areas such as Luang Prabang, Vientiane Province and Champasack provinces. The correspondents were the tourist who traveled on weekend to the natural, historical, cultural attractions as well as staying at various accommodations.

According to the survey analysis of the domestic tourists mentioned that most of the tourists were from other provinces, most of them were between 30-39 years old, most of them were traders/ entrepreneurs and workers from private sector. This group of tourists earns more than 4,000,001 LAK/ month and traveling during the weekends such as Friday, Saturday and Sunday. Mostly, they were traveling with their family and friends, with the purpose of leisure and visiting friends and family. They traveled to the destination by car and airplane, with receiving the information from the social media and friends. The survey result has shown that tourists mostly like to stay at the hotels and guesthouses and they were interested in the attractions like nature/ waterfall and culture/ lifestyle. Their average length of stay was 2 days with the average expenditure of 1,000,000 LAK/ person/ time.

In addition, the survey results also highlighted that the tourists were satisfied with the tourist attractions. However, they also advised to improve the road accessibility to the attractions, improving the services, toilets and cleanliness at the tourist attractions.

**Table 34: Characteristics of Domestic Tourism Stream**

<b>CHARACTERISTIC</b>	<b>2021</b>
<b>Tourists are from</b>	<b>100%</b>
Local	12.5
Other provinces	87.5
<b>GENDER</b>	<b>100%</b>
Male	56.9
Female	43.1
<b>AGE</b>	<b>100%</b>
Below 19 years old	10.8
20 - 29 years old	34.1
30 - 39 years old	36.4
40 - 49 years old	16.6
50 - 59 years old	2
Over 60 years old	0.1
<b>OCCUPATION</b>	<b>100%</b>
Government Officials	15.6
private Sector Staff	31.2
Trading/ Entrepreneur	36
Student	13.8
Unemployed	0.8
Retired Staff	0.4
Others	2.2
<b>MONTHLY INCOME</b>	<b>100%</b>
Less than 1,000,000 LAK	14.2
1,000,001 - 1,500,000 LAK	4
1,500,001 - 2,000,000 LAK	12.2
2,000,001 - 2,500,000 LAK	16
2,500,001 - 3,000,000 LAK	9.8
3,000,001 - 4,000,000 LAK	19.5
More than 4,000,000 LAK	24.3
<b>MODES OF TRAVELING</b>	<b>%</b>
Alone	10.1
Family	45.5
Spouse/ partner	7.6
Colleague/ co-worker	21.3
Friends	24.4
Others	0.1



<b>PURPOSE OF VISIT</b>	<b>%</b>
Leisure	86
Visiting Friend & Family	21.1
Business	8.6
Official, convention and seminar	11
Education/ Field trip	0.2
Treatment	2.3
Religion	2.9
Others	0.3
<b>MODES OF TRAVELING</b>	<b>%</b>
Airplane	10
Public Transportation	3.9
Personal vehicle	89.4
Tour coach, bus, etc.	1.3
Cruise. Boat, etc.	0.9
Train	1.2
Others	0.9
<b>RESOURCES FOR TRAVEL DECISION</b>	<b>%</b>
Website	11.1
Facebook	87
Book & magazines	8.5
TV & radio	7.2
Friends	76.3
Tour company	2.6
Others	1
<b>TYPES OF ACCOMMODATION</b>	<b>%</b>
Hotel	35.6
Guesthouse	8.5
Own accommodation/ house	9.1
Relative's accommodation/ house	5.3
Others	46.2
<b>INTERESTED TYPES OF ACCOMMODATION</b>	<b>%</b>
Natural attractions	95.6
Historical attractions	23.3
Cultural attractions	42.7
Events & Festivals	3
Others	0.5
<b>LENGTH OF STAY</b>	<b>2 Days</b>
<b>AVERAGE EXPENDITURE</b>	<b>1,300,000 LAK</b>
<b>LEVELS OF SATISFACTION</b>	<b>100%</b>
Very Satisfied	16.4
Satisfied	46.6
Normal	32.8
Dissatisfied	2
Very Dissatisfied	2.2

## Employment in Tourism Sector

According to a survey conducted by the Lao National Chamber of Commerce and Industry and the results of the Tourism Skills Survey in 2021 by the Skills for Tourism Project (LAO/029), most of the businesses in the tourism sector plan to recruit more people to receive the international and domestic visitors to Laos. It is estimated that up to 4,000 jobs in tourism sector will be advertised. In addition, there are 25,254 vacancies in the special economic zones (in the first nine months of 2021).

Sector	Staff Turnover	Turnover Rate(%)	Current Vacancies	Vacancy Rate(%)	Recruitment next 12 months	Recruitment Rate(%)
Hotel	411	6.10%	192	2.80%	825	12.20%
Resort	54	4.30%	39	3.00%	25	2.00%
Guesthouse	235	3.90%	122	2.00%	247	4.10%
Restaurant	989	12.10%	441	5.40%	432	5.30%
Entertainment	228	6.50%	204	5.90%	397	11.40%
Travel services	206	12.60%	68	4.20%	321	19.70%
Attraction	305	3.70%	234	2.80%	219	2.70%
Handicrafts	325	6.30%	478	9.30%	1,501	29.30%
Region						
Vientiane Capital	1,439	15.10%	981	10.30%	3,184	33.30%
Central	596	6.20%	350	3.70%	314	3.30%
North	471	2.90%	260	1.60%	291	1.80%
South	246	4.80%	188	3.70%	179	3.50%

## Ministry of Information, Culture and Tourism Tourism Development Department

### Head Office:

P.O. Box: 3556  
Lane Xang Avenue  
Vientiane, Lao PDR  
Tel: (856 21) 212 251, 212 769, 217910, 252961.  
Fax: (856 21) 217910.

### Website:

<http://www.tourismlaos.org>  
<http://www.ecotourismlaos.com>  
<http://www.laotourismdevelopment.com>

### Provincial Offices: Country code: 856.

Attapeu	Tel: (036) 211 056	Fax: (036) 211 014
Bokeo	Tel: (084) 211 162	Fax: (084) 211 162
Bolikhambxay	Tel: (054) 212 667	Fax: (054) 212 667
Champasack	Tel: (031) 212 021	Fax: (031) 212 021
Houaphanh	Tel: (064) 312 567	Fax: (064) 312 567
Khammouane	Tel: (051) 212 512	Fax: (051) 212 512
Luang Namtha	Tel: (086) 312 047	Fax: (086) 312 047
Luang Prabang	Tel: (071) 212 487	Fax: (071) 252 904
Oudomxay	Tel: (081) 211 797	Fax: (081) 212 482
Phongsaly	Tel: (088) 210 098	Fax: (088) 210 098
Saravanh	Tel: (034) 211 528	Fax: (034) 211 528
Savannakhet	Tel: (041) 212 755	Fax: (041) 212 755
Sekong	Tel: (038) 211 361	Fax: (038) 211 013
Vientiane Capital	Tel: (021) 222 971	Fax: (021) 212 926
Vientiane Province	Tel: (023) 211 629	Fax: (023) 211 629
Xaisomboun	Tel: (026) 210 030	Fax: (026) 210 030
Xaiyabouli	Tel: (030) 5180095	Fax: (074) 211 183
Xieng Khouang	Tel: (061) 312 217	Fax: (061) 312 217

## Advisors:

Mrs. Phonemaly INTHAPHOME	Director General of Tourism Development Department
Mr. Ongeun PANYANOUVONG	Deputy Director General of Tourism Development Department
Mr. Somxay SIPASEUTH	Deputy Director General of Tourism Development Department

## Editors:

Mr. Sophab SOMSOUK	Director Statistics and Tourism Research Division
Mr. Bounthavy SISAVA	Deputy Director Statistics and Tourism Research Division
Mr. Xaynalong BOUNTA	Deputy Director Statistics and Tourism Research Division

## Assistants:

Ms. Angkham CHAIMAVONGSACK	Technical Statistics and Tourism Research Division
Mr. Daochan SINGKHAMYONG	Technical Statistics and Tourism Research Division
Ms. Ketmanyvone BUAKHAMSITH	Technical Statistics and Tourism Research Division
Mr. Thinakhone PHOMMAKAYSONE	Technical Statistics and Tourism Research Division
Ms. Tabe SENGPAKAY	Technical Statistics and Tourism Research Division

## Provincial Coordinators:

Ms. Soukpadith TANVILAY	Attapeu	Provincial Information, Cultural and Tourism Department
Mr. Soulisith SOMSY	Bokeo	Provincial Information, Cultural and Tourism Department
Mr. Sonevixay SIHALATH	Bolikhamxay	Provincial Information, Cultural and Tourism Department
Mr. Sonepasert SOUKKASERM	Champassak	Provincial Information, Cultural and Tourism Department
Mr. Yord TIMARCHAK	Huaphanh	Provincial Information, Cultural and Tourism Department
Ms. Bounthavy DAMLUESA	Khammouane	Provincial Information, Cultural and Tourism Department
Mr. Southat VONGCHAILA	Luang Namtha	Provincial Information, Cultural and Tourism Department
Ms. Noy THAMMAKHAN	Luang Prabang	Provincial Information, Cultural and Tourism Department
Mr. Kham CHITTIVONG	Oudomxay	Provincial Information, Cultural and Tourism Department
Mr. Sombat PHOMMALUNGSY	Phongsaly	Provincial Information, Cultural and Tourism Department
Ms. Hatthasin CHANTHASONE	Saravanh	Provincial Information, Cultural and Tourism Department
Mr. Chanthachak KITTAVONG	Savannaket	Provincial Information, Cultural and Tourism Department
Mr. Khanpheng SIPASERT	Sekong	Provincial Information, Cultural and Tourism Department
Mr. Sisombut THONGPHALIT	Vientiane Capital	Provincial Information, Cultural and Tourism Department
Mr. Tom SINOUNCHAN	Vientiane Province	Provincial Information, Cultural and Tourism Department
Mr. kong yang XAISOMBOUN	Xaisomboun	Provincial Information, Cultural and Tourism Department
Mr. Xerker THAO	Xaiyabuli	Provincial Information, Cultural and Tourism Department
Ms. Phanthaphone SAYPHOUKHEUA	Xieng Khouang	Provincial Information, Cultural and Tourism Department



LAOS

*Simply Beautiful*