
Statistical

Report on Tourism in Laos 2017



Ministry Of Information, Culture and Tourism
Tourism Development Department
Tourism Research Division

ACKNOWLEDGEMENT

The Tourism Development Department (TDD), Ministry of Information, Culture and Tourism publishes annually tourism statistics relating to tourist arrivals, foreign exchange earnings from tourism, tourist expenditures, the average length of stay of tourists in Laos as well as tourist profiles, accommodation establishments and occupancy rates. The purpose of this Statistical Report on Tourism is to provide the public with clear information on a rapidly expanding sector of the Lao economy.

The Tourism Development Department (TDD) would like to take this opportunity to express its gratitude to the following agencies: Provincial Tourism Division of Departments of Information, Culture and Tourism, the Lao Immigration Department, Wattay International Airport Authority, Lao travel agents and hotels for their cooperation as well as their valuable assistance in the processing of statistical data and conducting statistical surveys.

On behalf of the tourism sector, I hope that the 2017 Statistical Report on Tourism in Lao PDR will be useful and beneficial to all of you.



Dr. Aloun BOUNMIXAY
Director General
Tourism Development Department

Contents

ACKNOWLEDGEMENT	i
Background Information	1
Part I: Tourist Arrival Statistics 2017	5
Table 1: Number of Tourist Arrivals, Revenue from Tourism, and Average Length of Stay, 1990-2017	5
Summary	6
Graph 1: Region Visitor Arrivals by Month	7
Graph 2: Visitor Arrivals by Month	7
Graph 3: Seasonality 3 Years	8
Graph 4: Annual Growth in Visitor with Projection	8
Graph 5: Visitor Arrivals by Regions	9
Graph 6: Growth in Visitor Number and Expenditure from Regions	10
Table 2: Number of Tourist Arrivals to Laos by Category, 2016-2017	11
Table 3: Revenue from Tourism by Category, 2017	11
Table 4: Tourist Arrivals to Laos by Nationality (Percent Increase) 2012-2017	12
Table 5: Tourist Arrivals to Laos by Nationality (Market Share) 2013-2017	13
Market Situation	14
Table 6: Tourist Arrivals to Laos by Month in 2017	15
Table 7: Arrivals of non-resident visitors at national borders, by month	16
Table 8: Tourist Arrivals by Month through Category, 2014-2017	16
Graph 7: Origin and Growth in Visitors	17
Graph 8: Top Generating Markets	18
Table 9: Ranks Country by Tourist Expenditures, Not Total Arrivals	19
Table 10: Tourist Arrivals by Port of Entry through Category, 2013-2017	19
Graph 9: Arrivals Years Border Point	20
Table 11: Tourist Arrivals to Laos by Port of Entry in 2017	21
Table 12: Number of Domestic Tourists, 2014-2017	23
Table 13: International Visitors by Province, 2013-2017	23
Graph 10: Out-going Lao Travelers	24
Table 14: Out-going Lao Travelers, 2013-2017	24
Table 15: Room Occupancy Rates by Province, 2010-2017	25
Table 16: Number of Hotels, Guesthouses, Resorts, Restaurants and Entertainment Establishments, 2016-2017	25
Table 17: Number of Accommodation Establishments, and Rooms 2011-2017	26
Table 18: Number of Hotels, Guesthouses, Rooms, and Beds, in 2017	26
Table 19: Visitor Arrivals to Luang Phabang Province	27
Part II: International Visitor Survey	28
Table 20: Profile of International Tourist Arrivals to Laos, 2012-2017	28
Part III: Tourism Projections	30
Table 21: Tourist Arrivals to Laos, Revenue from Tourism, Average Length of Stay by Time Trend from 1993-2025	30
Table 22: Tourist Arrivals Forecast by Season from 2018 to 2025	31
Table 23: Number of Laos Travel Agents 2011-2017	32
Table 24: Number of Tourist Sites in Laos in 2017	32
Table 25: International Visitor Arrivals by Mode of Transport and Purpose of Visit, 2014-2017	33
Table 26: Revenue from Tourism and Major Exports, 2013-2017	33
Ministry of Information, Culture and Tourism	34

Background Information

This section includes background information on the statistical data contained in this report and on how they were obtained.

Categories of Foreign Visitors

Foreign visitors to Laos are grouped into two categories: **international tourists and regional tourists**.

□ **International tourists** are those tourists who enter Laos with a valid passport and visa obtained from a Lao embassy or consulate abroad, or a visa obtained on arrival at an international border checkpoint.

□ **Regional tourists** are tourists from neighboring countries such as: Thailand, China, Myanmar, Vietnam and Cambodia, which share borders with Laos. They enter Laos with valid border passes or passports. Although some of them are called “day trippers,” they may make overnight stays.

From 1991 to 2002, there was a type of tourists called **Tourists for visa extension**. They are temporary workers in Thailand who cross over the border into Laos in order to extend their three-month visas before reentering Thailand. These tourists are mainly from India, Pakistan, Sri Lanka, Nepal and Bangladesh. However, from 2003 this type of tourist has been reclassified as “international tourists”.

Data Collection

□ From 1990 to 1994, statistical data on **international tourists** were collected from embarkation/disembarkation cards of the immigration department and from documents received by the Lao National Tourism Administration (LNTA) from local travel companies. These documents contain the following information:

Name of Travel Company

Name of tourist

Sex

Passport number

Nationality

Carrier

Duration of stay

Port of entry

Place of stay

Since 1995, data on **international tourists** have been collected only from embarkation/disembarkation cards of the immigration department.

□ Data on **regional tourists** were collected from tabulations sent to the Tourism Development Department (TDD) by immigration officers at each border checkpoint.

□ Data on tourist profiles, length of stay, and average expenditure per person per day were all calculated using statistical surveys conducted periodically through sampling survey methods.

Entry Ports

By air:

□ **Wattay International Airport** is the main entry point by air for international tourists; flights are available through Thai Airways, Lao Airlines, Vietnam Airlines, Air Asia, China Eastern Airlines and Bangkok Airways from Vientiane to Bangkok, Chiang Mai, Hanoi, Hochiminh, Kuala Lumpur, Kunming, Phnom Penh, Siem Reap, Seoul, Singapore and Guangzhou.

□ **Luang Prabang International Airport** is now an international entry point, and regular flights are available from Luang Prabang to Vientiane, Chiang Mai, Bangkok, Hanoi, Jinghong, Chenedu, Siemreap, Singapore and Incheon.

□ **Savannakhet International Airport**, the only international flight on this route is from Savannakhet to Bangkok and vice-versa operated by Lao Airlines.

□ **Pakse International Airport** is stopover point from Vientiane to Phnom Penh, Siem Reap, Hochiminh and Bangkok. Lao Airlines flies daily from Pakse to Bangkok via Savannakhet.

□ In addition, there are several **provincial airports**, used only for domestic flights within the Lao PDR. (Luang Prabang, Oudomxay, Bokeo, Huaphanh, Xiengkhouang and Attapeu).

By land:

From Thailand:

- Mittaphab (Friendship Bridge I)**, Vientiane Capital City, the major point of entry for regional and international tourists.
- Thanaleng Railway Station**, Vientiane Capital City.
- Houeixay (Friendship Bridge IV) and Golden Triage**, Bokeo Province.
- Pakxan**, Bolikhamxay Province.
- Mittaphab (Friendship Bridge III)**, Khammouane Province.
- Mittaphab (Friendship Bridge II)**, Savannakhet Province.
- VangTao**, Champassack Province.
- Nam Heuang Bridge, PhanhKeo and Nam Ngeun**, Xaiyabouli Province.

From China:

- Boten**, LuangNamtha Province.
- Lantoui**, Phongsali Province.

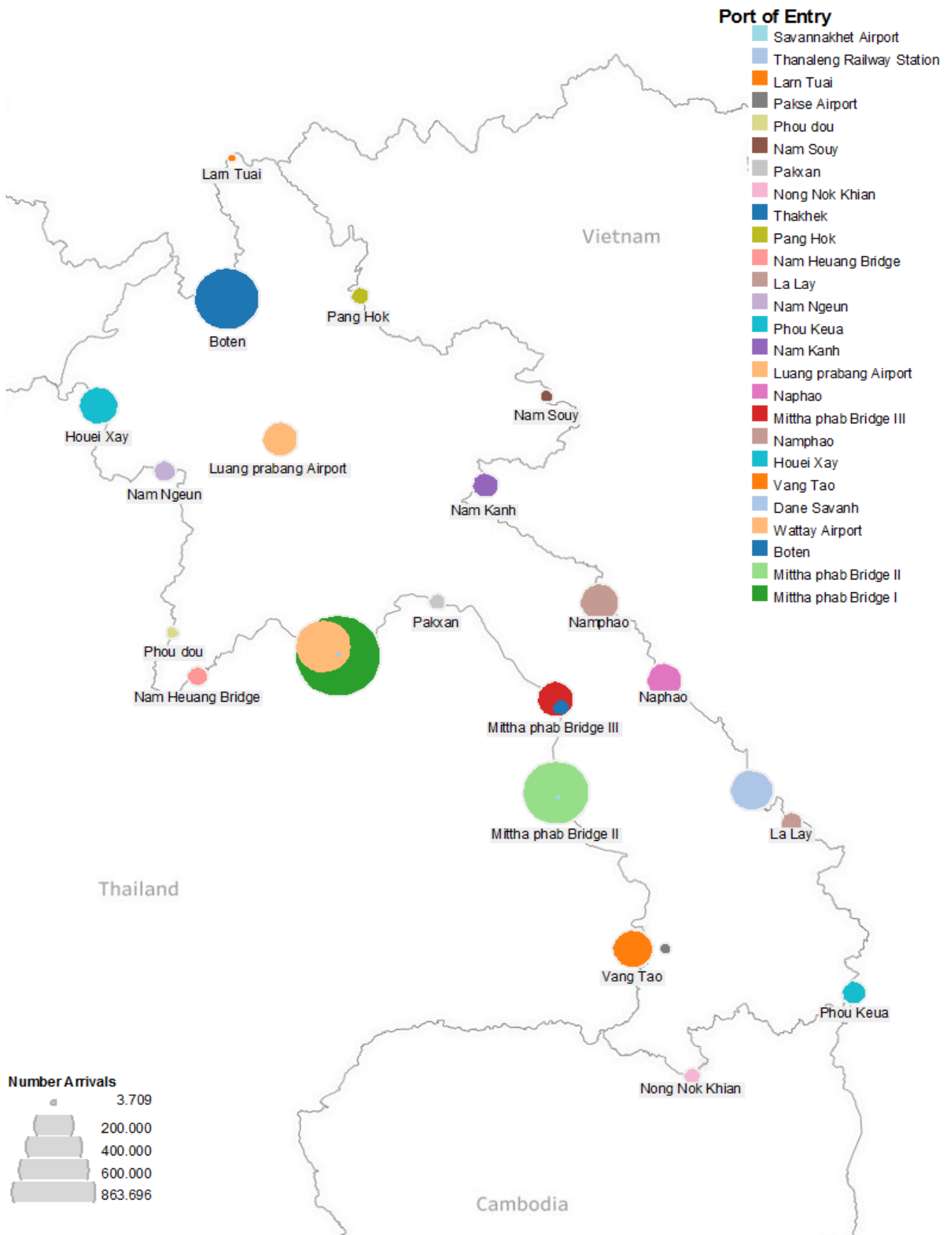
From Vietnam:

- Dane Savanh**, Savannakhet Province, the major point of entry for Vietnamese travelers.
- Nam Kanh**, XiengKhouang Province (regional border checkpoint only).
- Nam Phao**, Bolikhamxay Province.
- Na Phao**, Khammouane Province.
- NamSouy**, Huaphanh Province.
- Pang Hok**, Phongsali Province.
- Phoukeua**, Attapeu Province.
- Lalai**, Saravanh Province.

From Cambodia:

- NongNokKhian**, Champassack Province.

Laos International Border Check Points



Part I: Tourist Arrival Statistics 2017

Table 1: Number of Tourist Arrivals, Revenue from Tourism, And Average Length of Stay, 1990-2017

Year	Number of Tourist Arrivals	(%) Δ	Average Length of Stay (Days) for International Tourists	Average Length of Stay (Days) for Regional Tourists	Average Length of Stay (Days) for the Total Tourist Arrivals	Revenue from Tourism (Dollars)
1990	14,400	NA	NA	NA	NA	NA
1991	37,613	161	NA	NA	NA	2,250,000
1992	87,571	133	NA	NA	NA	4,510,000
1993	102,946	18	3.5	NA	NA	6,280,000
1994	146,155	42	5.1	NA	NA	7,557,600
1995	346,460	137	4.3	NA	NA	24,738,480
1996	403,000	16	4.8	1.8	3.3	43,592,263
1997	463,200	15	5.0	3.0	4.0	73,276,904
1998	500,200	8	5.0	2.4	3.7	79,960,145
1999	614,278	23	5.5	2.4	4.0	97,265,324
2000	737,208	20	5.5	2.4	4.0	113,898,285
2001	673,823	-9	8.0	2.4	5.2	103,786,323
2002	735,662	9	6.5	2.1	4.3	113,409,883
2003	636,361	-14	6.0	2.0	4.0	87,302,412
2004	894,806	41	6.5	2.0	4.3	118,947,707
2005	1,095,315	22	7.0	2.0	4.5	146,770,074
2006	1,215,106	11	7.0	2.0	4.5	173,249,896
2007	1,623,943	34	7.0	2.0	4.5	233,304,695
2008	1,736,787	7	6.5	2.0	4.3	275,515,758
2009	2,008,363	16	7.0	2.0	4.5	267,700,224
2010	2,513,028	25	7.0	2.0	4.5	381,669,031
2011	2,723,564	8	7.0	2.0	4.5	406,184,338
2012	3,330,072	22	7.2	2.0	4.6	506,022,586
2013	3,779,490	13	8.4	2.0	5.2	595,909,127
2014	4,158,719	10	7.9	2.0	4.9	641,636,543
2015	4,684,429	13	7.5	2.0	4.75	725,365,681
2016	4,239,047	-10	7.57	2.0	4.78	724,191,957
2017	3,868,838	-8.73	8.39	2.0	5.2	648,067,008

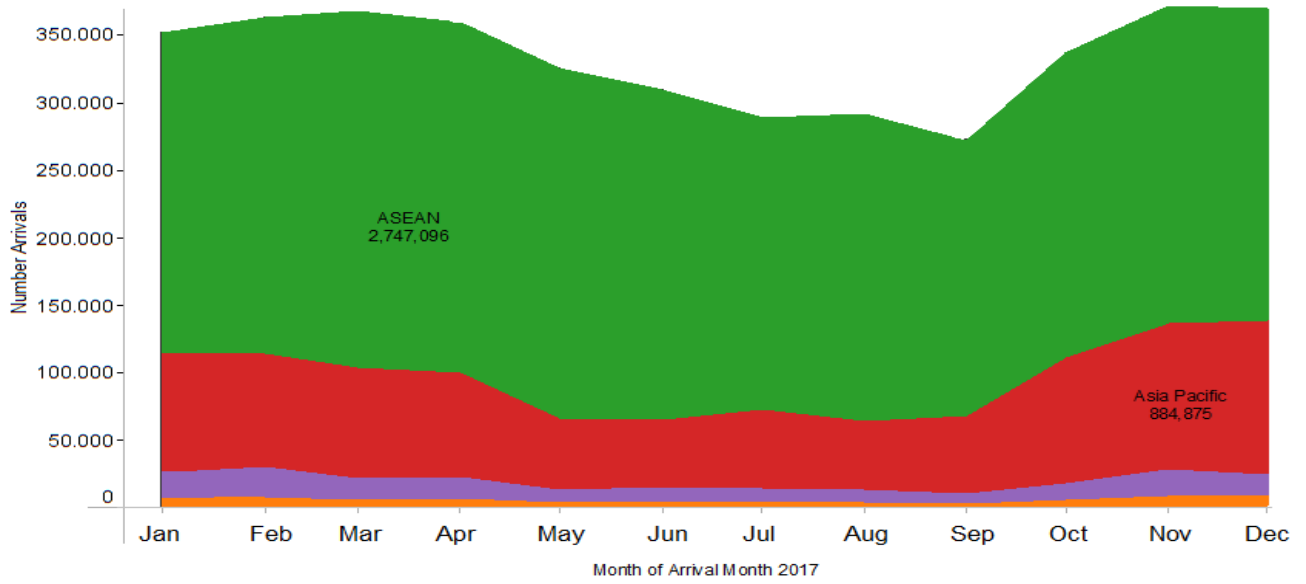
Summary

Because of its strategic location (in the center of Indochina and South-East Asia), Lao PDR is considered to be a “add on destination”. Therefore, Lao tourism performances are likely influenced by several factors at regional level, they are worldwide tourism trends, the movement of tourists to the region climate change, political and economic circumstances, natural disasters, terrorist attacks, and other, the development of unique tourism products for Laos, tourists circuits living Laos with neighboring countries and increase in tourism cooperation with regional countries will be the essential factors to contribute to the success of Lao tourism.

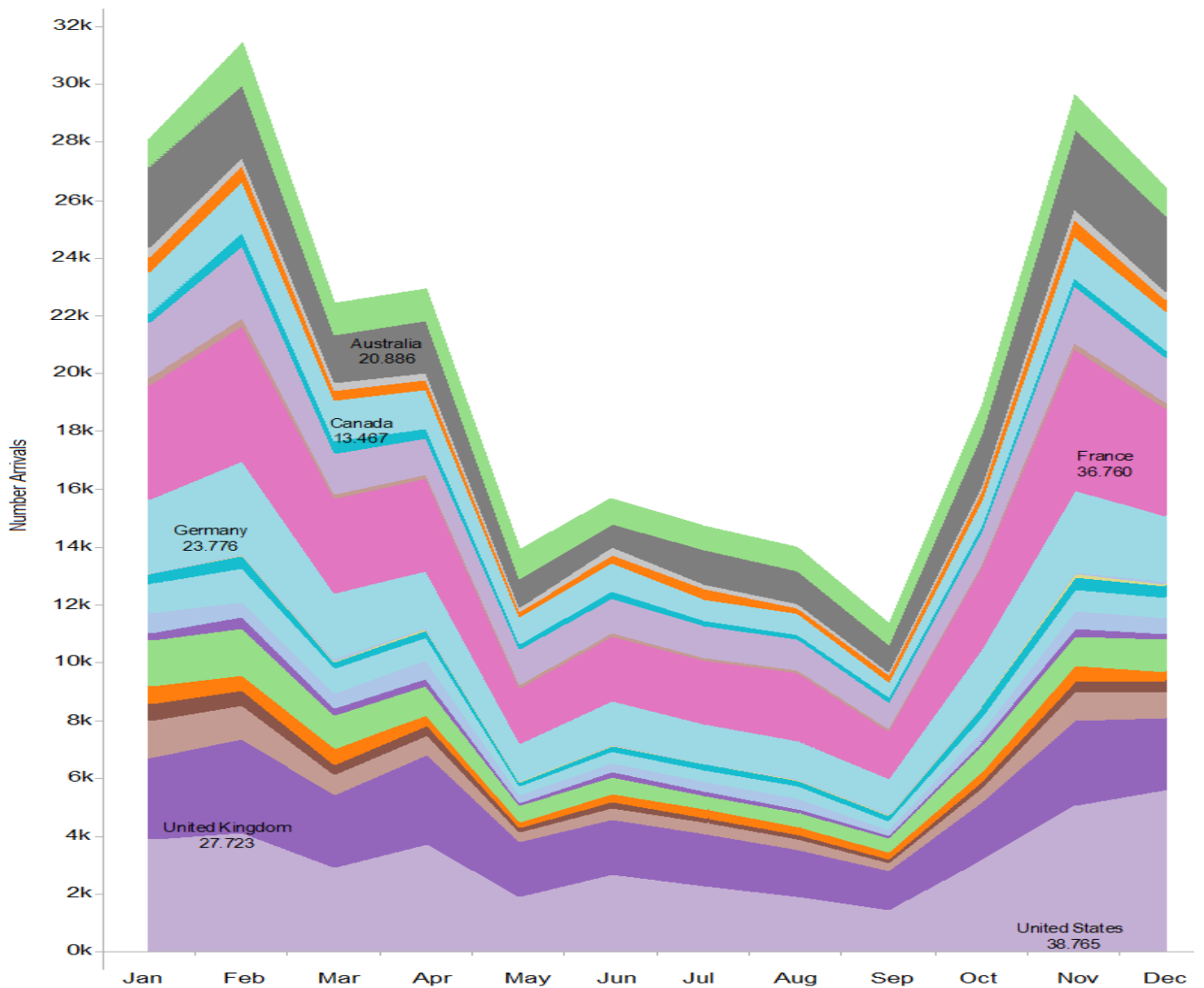
In addition, tourism is one of the eight priority programmes of the socio-economic development of the Lao government. Therefore, the Ministry of Information, Culture and Tourism has set up the National Tourism Strategy for the period 2016-2025, which is in line with the government policy.

In the period 1990 to 2016 the number of visitors increased every year. Since 2016 this trend has changed, with a drop of 9.6% in 2016 (4,215,285 visitors), and a further drop of 8.6% in 2017 (3,851,849). Only China showed an increased number of visitors to Laos in 2017.

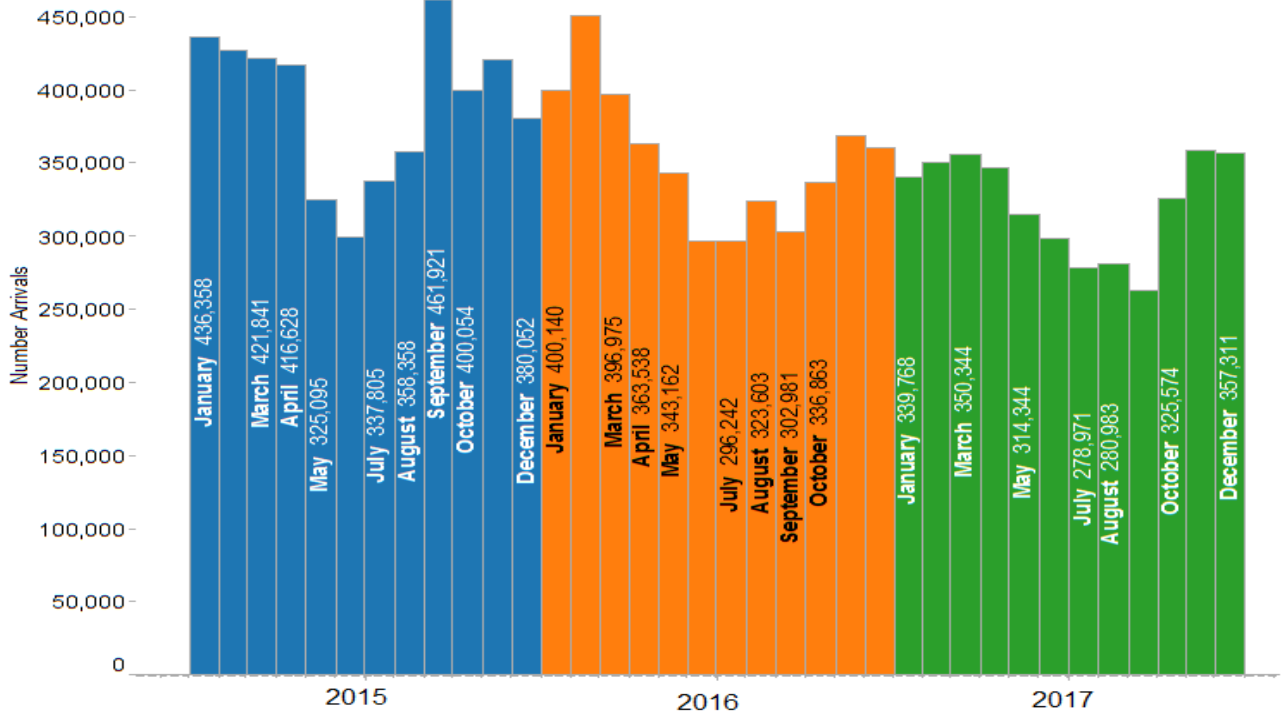
Graph 1: Region Visitor Arrivals by Month



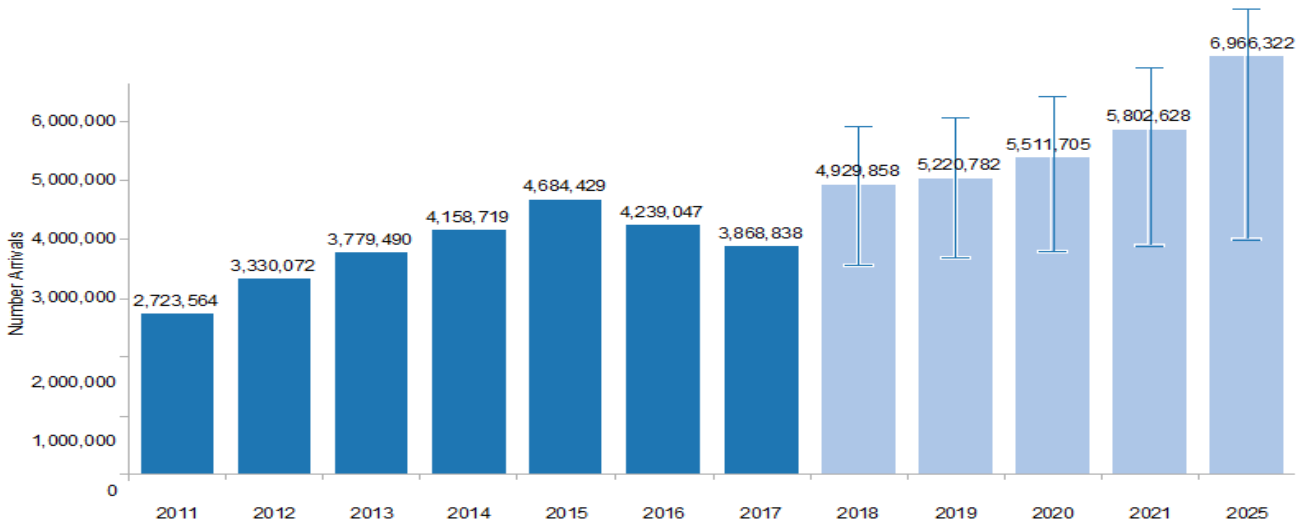
Graph 2: Visitor Arrivals by Month



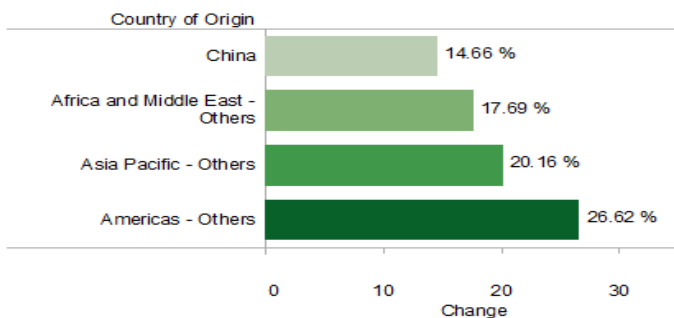
Graph 3: Seasonality 3 Years



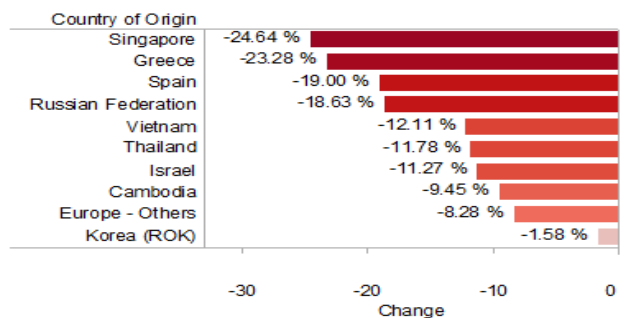
Graph 4: Annual Growth in Visitor with Projection

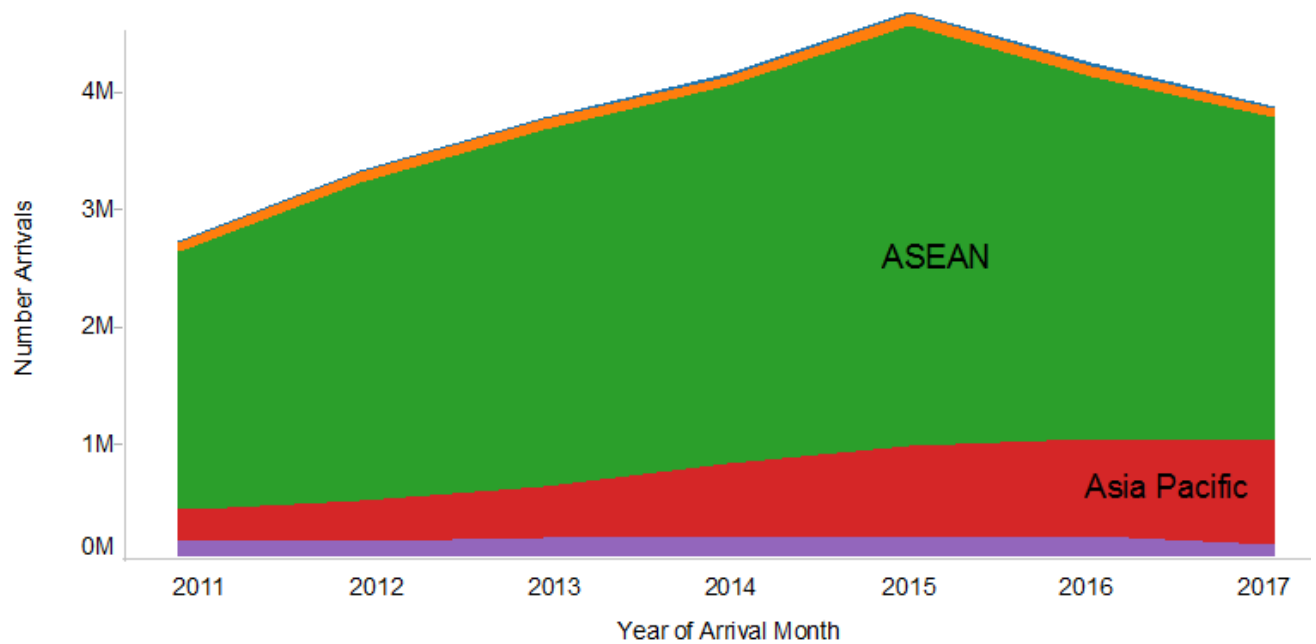


Greatest % Increase in visitors from 2016 to 2017



Greatest % Fall in visitors from 2016 to 2017



Graph 5: Visitor Arrivals by Regions**Visitor Arrivals by Region**

Region	2011	2012	2013	2014	2015	2016	2017
ASEAN	2,191,224	2,712,478	3,041,233	3,224,080	3,588,538	3,083,383	2,747,096
Asia Pacific	273,427	348,637	431,878	630,361	778,942	836,282	884,875
Europe	181,539	185,802	212,566	209,331	217,307	221,908	161,194
Americas	69,990	75,851	85,899	86,027	88,987	86,211	64,227
Africa and Middle East	7,384	7,304	7,914	8,920	10,655	11,263	11,446
Grand Total	2,723,564	3,330,072	3,781,503	4,158,719	4,684,429	4,239,047	3,868,838

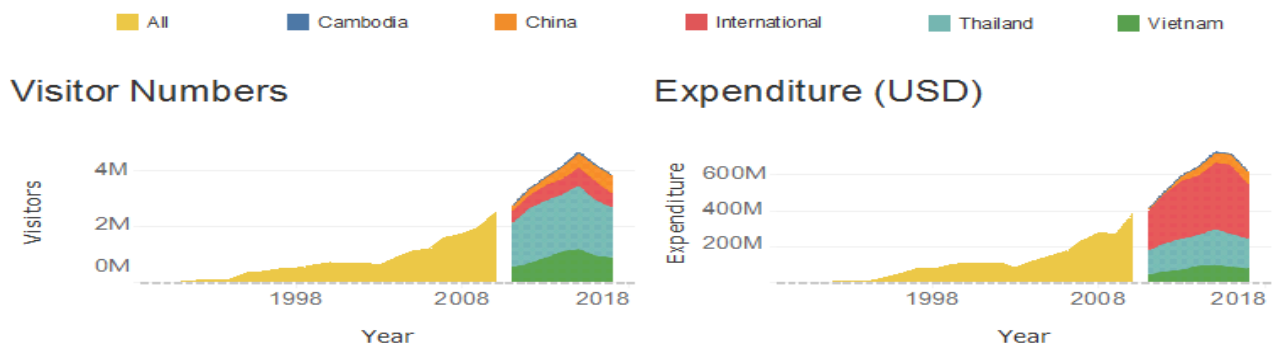
Market Share of Visitor Arrivals by Region

Region	2011	2012	2013	2014	2015	2016	2017
ASEAN	80.45%	81.45%	80.47%	77.53%	76.61%	72.74%	71.01%
Asia Pacific	10.04%	10.47%	11.43%	15.16%	16.63%	19.73%	22.87%
Europe	6.67%	5.58%	5.62%	5.03%	4.64%	5.23%	4.17%
Americas	2.57%	2.28%	2.27%	2.07%	1.90%	2.03%	1.66%
Africa and Middle East	0.27%	0.22%	0.21%	0.21%	0.23%	0.27%	0.30%
Grand Total	100%	100%	100%	100%	100%	100%	100%

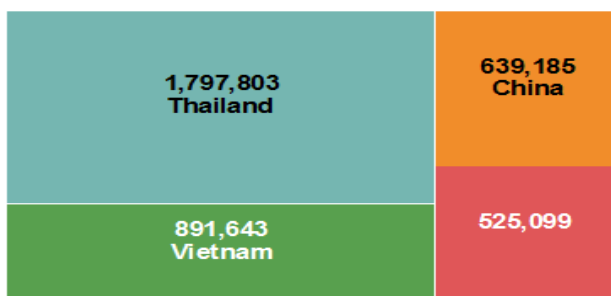
% Change over Previous Year Visitor Arrivals by Regions

Region	11/10	12/11	13/12	14/13	15/14	16/15	17/16
ASEAN	10%	24%	12%	6%	11%	-14%	-11%
Asia Pacific	2%	28%	24%	46%	24%	7%	6%
Europe	2%	2%	14%	-2%	4%	2%	-27%
Americas	4%	8%	13%	0.15%	3%	-3%	-26%
Africa and Middle East	2%	-1%	8%	13%	19%	6%	2%
Grand Total	8%	22%	13%	10%	13%	-10%	-8.73%

Graph 6: Growth in Visitor Number and Expenditure from Regional



Visitor Numbers in 2017



Expenditure in 2017



Expenditure

Origin	1/1/14	1/1/15	1/1/16	1/1/17
Cambodia	1,149,978	1,558,290	1,308,840	1,178,292
China	46,656,510	53,779,305	59,329,845	67,509,795
International	329,400,513	368,956,822	388,948,126	337,467,475
Thailand	171,864,592	204,053,624	184,361,348	165,738,140
Vietnam	92,565,066	97,017,504	84,439,524	76,173,306

Visitor Days

	1/1/14	1/1/15	1/1/16	1/1/17
Cambodia	40,108	54,235	45,008	40,672
China	1,019,772	1,194,514	1,303,233	1,497,287
International	4,493,868	4,822,965	5,064,429	3,975,000
Thailand	3,970,076	4,639,390	4,129,741	3,706,363
Vietnam	3,140,770	3,310,058	2,856,316	2,571,951

% of Total Expenditure Table (Down)

Origin	1/1/14	1/1/15	1/1/16	1/1/17
Cambodia	0%	0%	0%	0%
China	7%	7%	8%	11%
International	51%	51%	54%	50%
Thailand	27%	28%	26%	27%
Vietnam	14%	13%	12%	12%

% of Total Visitor Days along Table (Down)

	1/1/14	1/1/15	1/1/16	1/1/17
Cambodia	0%	0%	0%	0%
China	8%	9%	10%	13%
International	35%	34%	38%	34%
Thailand	31%	33%	31%	31%
Vietnam	25%	24%	21%	22%

% Difference in Expenditure from the Previous Year of Year

Origin	1/1/14	1/1/15	1/1/16	1/1/17
Cambodia	43%	36%	-16%	-10%
China	91%	15%	10%	14%
International	2%	12%	5%	-22%
Thailand	0%	19%	-10%	-10%
Vietnam	22%	5%	-13%	-10%
Vietnam	22%	5%	-13%	-10%

% Difference in Visitor Days from the Previous Year of Year

	1/1/14	1/1/15	1/1/16	1/1/17
Cambodia	38%	35%	-17%	-10%
China	84%	17%	9%	15%
International	-3%	7%	5%	-22%
Thailand	0%	17%	-11%	-10%
Vietnam	22%	5%	-14%	-10%
Vietnam	22%	5%	-14%	-10%

Table 2: Number of Tourist Arrivals to Laos by Category, 2016-2017

Category	Border Pass		Border Pass		Passport		Total	
	Day tripper	Stay Overnight	2016	2017	2016	2017	2016	2017
	2017							
Grand Total	611,992	496,228	1,184,151	1,108,220	3,054,896	2,760,618	4,239,047	3,868,838
International Tourist					681,294	525,099	681,294	525,099
Regional Tourist	611,992	496,228	1,184,151	1,108,220	2,373,602	2,235,519	3,557,753	3,343,739
Thailand	506,114	337,409	949,536	843,523	1,060,069	954,280	2,009,605	1,797,803
Vietnam	20,895	31,343	69,441	52,238	928,959	839,405	998,400	891,643
China	84,053	126,080	162,874	210,133	370,342	429,052	533,216	639,185
Cambodia	930	1,396	2,300	2,326	14,232	12,782	16,532	15,108

Table 3: Revenue from Tourism by Category, 2017

Category	Number of Tourist Arrivals (person)	Average Length of Stay (days)	Average Expenditure per Person per day (dollars)	Revenue from Tourism in 2017 (dollars)
Total	3,868,838	5.2	52.11	648,067,008
International Tourist	525,099	8.39	76.6	337,467,475
Regional Tourist	3,343,739			310,599,533
Thai (Passport)	954,280	3	52	148,867,680
Thai (Border pass)	843,523	1	20	16,870,460
Vietnam (Passport)	839,405	3	30	75,546,450
Vietnam (Day Tripper)	52,238	1	12	626,856
China (Passport)	429,052	3	50	64,357,800
China (Day Tripper)	210,133	1	15	3,151,995
Cambodia (Passport)	12,782	3	30	1,150,380
Cambodia (Border pass)	2,326	1	12	27,912

**Table 4: Tourist Arrivals to Laos by Nationality
(Percent Increase) 2012-2017**

Region	Country	2012	2013	2014	2015	2016	2017	% ▽
Grand Total		3,330,072	3,779,490	4,158,719	4,684,429	4,239,047	3,868,838	-8.73
ASEAN		2,712,478	3,041,233	3,224,080	3,588,538	3,083,383	2,747,096	-11
	Brunei	533	582	564	865	484	342	-29
	Cambodia	15,140	12,180	15,342	20,625	16,536	15,108	-9
	Indonesia	4,256	4,888	4,812	6,019	5,010	3,241	-35
	Malaysia	22,785	26,035	24,312	24,095	24,391	19,114	-22
	Myanmar	1,730	1,947	2,157	2,661	3,695	2,848	-23
	Philippines	14,281	16,318	15,179	16,709	16,750	10,168	-39
	Singapore	10,545	9,685	9,621	8,258	8,512	6,829	-20
	Thailand	1,937,612	2,059,434	2,043,761	2,321,352	2,009,605	1,797,803	-11
	Vietnam	705,596	910,164	1,108,332	1,187,954	998,400	891,643	-11
Asia and Pacific		348,637	431,878	630,361	778,942	836,282	884,875	6
	Australia	33,878	35,450	44,964	34,665	33,077	20,886	-37
	China	199,857	245,033	422,440	511,436	545,493	639,185	17
	India	3,275	4,551	4,547	5,492	8,249	4,343	-47
	Japan	42,026	48,644	44,877	43,826	49,191	32,064	-35
	Korea	53,829	81,799	96,085	165,328	173,260	170,571	-2
	New Zealand	5,418	5,451	5,200	4,798	4,787	3,202	-33
	Taiwan	3,996	4,771	5,478	6,131	14,005	4,329	-69
	Others	6,358	6,179	6,770	7,266	8,220	10,295	25
Europe		185,802	212,566	209,331	217,307	221,908	161,194	-27
	Austria	2,860	3,339	3,835	3,910	5,324	2,874	-46
	Belgium	6,284	6,046	5,343	5,289	5,682	4,371	-23
	Denmark	5,054	4,586	5,065	4,491	4,479	3,198	-29
	Finland	2,962	2,735	3,751	3,013	3,218	2,023	-37
	France	46,903	52,411	52,146	55,151	54,953	36,760	-33
	Germany	23,417	29,250	29,800	31,897	34,018	23,776	-30
	Greece	366	433	498	878	593	481	-19
	Italy	6,289	8,822	9,710	8,990	10,052	7,537	-25
	Netherlands	9,283	10,899	8,683	8,429	7,004	5,500	-21
	Norway	3,307	3,531	3,606	3,499	4,018	2,334	-42
	Russia	8,642	11,649	13,340	12,532	13,033	10,986	-16
	Spain	4,208	5,127	5,219	4,856	5,461	4,589	-16
	Sweden	6,676	5,194	5,804	5,465	5,795	3,483	-40
	Switzerland	10,096	10,586	9,064	9,777	10,603	7,956	-25
	United Kingdom	35,694	41,741	39,061	41,508	39,170	27,723	-29
	Others	13,761	16,217	14,406	17,622	18,505	17,603	-5
Americas		75,851	85,899	86,027	88,987	86,211	64,227	-26
	Canada	16,744	17,132	19,096	19,785	19,315	13,467	-30
	USA	53,380	61,608	61,460	63,058	58,094	38,765	-33
	Others	5,727	7,159	5,471	6,144	8,802	11,995	36
Africa and Middle East		7,304	7,914	8,920	10,655	11,263	11,446	2
	Israel	3,241	3,364	4,068	4,163	3,593	2,128	-41
	Others	4,063	4,550	4,852	6,492	7,670	9,318	21

Table 5: Tourist Arrivals to Laos by Nationality (Market Share) 2013-2017

Region	Country	2013		2014		2015		2016		2017	
Grand Total		3,779,490	100%	4,158,719	100%	4,684,429	100%	4,239,047	100%	3,868,838	100%
ASEAN		3,041,233	80.47	3,224,080	77.53	3,588,538	76.61	3,083,383	72.74	2,747,096	71.01
	Brunei	582	0.02	564	0.01	865	0.02	484	0.01	342	0.01
	Cambodia	12,180	0.32	15,342	0.37	20,625	0.44	16,536	0.39	15,108	0.39
	Indonesia	4,888	0.13	4,812	0.12	6,019	0.13	5,010	0.12	3,241	0.08
	Malaysia	26,035	0.69	24,312	0.58	24,095	0.51	24,391	0.58	19,114	0.49
	Myanmar	1,947	0.05	2,157	0.05	2,661	0.06	3,695	0.09	2,848	0.07
	Philippines	16,318	0.43	15,179	0.36	16,709	0.36	16,750	0.40	10,168	0.26
	Singapore	9,685	0.26	9,621	0.23	8,258	0.18	8,512	0.20	6,829	0.18
	Thailand	2,059,434	54.49	2,043,761	49.14	2,321,352	49.55	2,009,605	47.41	1,797,803	46.47
	Vietnam	910,164	24.08	1,108,332	26.65	1,187,954	25.36	998,400	23.55	891,643	23.05
Asia and Pacific		431,878	11.43	630,361	15.16	778,942	16.63	836,282	19.73	884,875	22.87
	Australia	35,450	0.94	44,964	1.08	34,665	0.74	33,077	0.78	20,886	0.54
	China	245,033	6.48	422,440	10.16	511,436	10.92	545,493	12.87	639,185	16.52
	India	4,551	0.12	4,547	0.11	5,492	0.12	8,249	0.19	4,343	0.11
	Japan	48,644	1.29	44,877	1.08	43,826	0.94	49,191	1.16	32,064	0.83
	Korea	81,799	2.16	96,085	2.31	165,328	3.53	173,260	4.09	170,571	4.41
	New Zealand	5,451	0.14	5,200	0.13	4,798	0.10	4,787	0.11	3,202	0.08
	Taiwan	4,771	0.13	5,478	0.13	6,131	0.13	14,005	0.33	4,329	0.11
	Others	6,179	0.16	6,770	0.16	7,266	0.16	8,220	0.19	10,295	0.27
Europe		212,566	5.62	209,331	5.03	217,307	4.64	221,908	5.23	161,194	4.17
	Austria	3,339	0.09	3,835	0.09	3,910	0.08	5,324	0.13	2,874	0.07
	Belgium	6,046	0.16	5,343	0.13	5,289	0.11	5,682	0.13	4,371	0.11
	Denmark	4,586	0.12	5,065	0.12	4,491	0.10	4,479	0.11	3,198	0.08
	Finland	2,735	0.07	3,751	0.09	3,013	0.06	3,218	0.08	2,023	0.05
	France	52,411	1.39	52,146	1.25	55,151	1.18	54,953	1.30	36,760	0.95
	Germany	29,250	0.77	29,800	0.72	31,897	0.68	34,018	0.80	23,776	0.61
	Greece	433	0.01	498	0.01	878	0.02	593	0.01	481	0.01
	Italy	8,822	0.23	9,710	0.23	8,990	0.19	10,052	0.24	7,537	0.19
	Netherlands	10,899	0.29	8,683	0.21	8,429	0.18	7,004	0.17	5,500	0.14
	Norway	3,531	0.09	3,606	0.09	3,499	0.07	4,018	0.09	2,334	0.06
	Russia	11,649	0.31	13,340	0.32	12,532	0.27	13,033	0.31	10,986	0.28
	Spain	5,127	0.14	5,219	0.13	4,856	0.10	5,461	0.13	4,589	0.12
	Sweden	5,194	0.14	5,804	0.14	5,465	0.12	5,795	0.14	3,483	0.09
	Switzerland	10,586	0.28	9,064	0.22	9,777	0.21	10,603	0.25	7,956	0.21
	United Kingdom	41,741	1.10	39,061	0.94	41,508	0.89	39,170	0.92	27,723	0.72
	Others	16,217	0.43	14,406	0.35	17,622	0.38	18,505	0.44	17,603	0.45
Americas		85,899	2.27	86,027	2.07	88,987	1.90	86,211	2.03	64,227	1.66
	Canada	17,132	0.45	19,096	0.46	19,785	0.42	19,315	0.46	13,467	0.35
	USA	61,608	1.63	61,460	1.48	63,058	1.35	58,094	1.37	38,765	1.00
	Others	7,159	0.19	5,471	0.13	6,144	0.13	8,802	0.21	11,995	0.31
Africa and Middle East		7,914	0.21	8,920	0.21	10,655	0.23	11,263	0.27	11,446	0.30
	Israel	3,364	0.09	4,068	0.10	4,163	0.09	3,593	0.08	2,128	0.06
	Others	4,550	0.12	4,852	0.12	6,492	0.14	7,670	0.18	9,318	0.24

Market Situation 2017

Overall Trends

In 2016 there was a fall in overall number of visitors, but this was driven by reduction in numbers from Thailand (-13%) and Vietnam (-16%), while all other markets showed some growth in 2016. In fact, excluding Thailand and Vietnam, visitor numbers increased by 4.5% in 2016.

However, in 2017 we see a drop in visitors from every market, with the only exception being China, with a 17.2% increase in visitors compared to 2016.

We should not focus on just the number of visitors – the length they stay and how much they spend per day are important measures. Looking at the number of visitor days (the number of visitors multiplied by the average length of stay), we see that the biggest market is still the international visitors, comprising 34% of all visitor days. Taking average expenditure into account, the international visitor group is even more significant, accounting for 50% of all estimated expenditure.

China accounts for 16.6% of all visitors and 11% of estimated expenditure in 2017, compared to only 6.5% of visitors and 4% of expenditure five years ago.

Visitors from South Korea had grown extremely quickly up to 2015, moderated in 2016, and has fallen slightly (-1.6%) in 2017. Despite this, the overall market share of South Korea rose to 4.4% in 2017.

Seasonality

There has been a gradual shift in the low season from month of May in 2015, to June/July in 2016, and September in 2017 recording the lowest number of visitors. This may reflect the growth in Visitors from China, and the reduction in visitors from Europe and the Americas.

There are also significant differences in seasonality in different markets, probably reflecting the reason for travel to Laos. Wattay Airport show the high season to be October to December, whereas Luang Prabang airport is January to March. For European, North American and Korean visitors the high season is November to April. There is less seasonality in visitors from ASEAN, but the high season is February to June. Holidays such as Tet show and increase in visitors from Vietnam, and from China during Chinese New Year.

Seasonality is important to consider in marketing Laos overseas and also for Tourism and Hospitality business and even Immigration to plan their staff needs.

Please see the online version of the Statistical Report on Tourism in Laos for more detailed information.

Table 6: Tourist Arrivals to Laos by Month in 2017

Region	Country	2017												Total
		Jan	Feb	Mar	Apr	May	Jun	Jul	Aug	Sep	Oct	Nov	Dec	
Grand Total		339,768	350,344	355,217	346,559	314,344	298,306	278,971	280,983	262,464	325,574	358,997	357,311	3,868,838
ASEAN		228,823	240,090	254,493	249,711	249,284	234,255	208,481	218,007	196,090	217,733	227,063	223,066	2,747,096
	Brunei	47	38	30	39	15	20	23	11	16	15	31	57	342
	Cambodia	815	969	1,209	1,368	1,567	727	1,465	1,094	989	1,786	1,755	1,364	15,108
	Indonesia	194	317	261	320	269	213	274	208	221	291	390	283	3,241
	Malaysia	1,100	1,967	1,146	1,567	1,184	1,231	1,248	1,163	1,080	2,097	2,448	2,883	19,114
	Myanmar	164	280	275	419	281	178	256	161	150	210	285	189	2,848
	Philippines	789	1,009	633	1,048	821	930	867	808	776	812	901	774	10,168
	Singapore	682	682	436	544	487	493	407	349	299	568	899	983	6,829
	Thailand	153,531	158,321	152,647	169,708	172,102	164,274	126,001	136,101	128,019	141,127	149,459	146,513	1,797,803
	Vietnam	71,501	76,507	97,856	74,698	72,558	66,189	77,940	78,112	64,540	70,827	70,895	70,020	891,643
Asia and Pacific		85,047	80,640	79,199	74,833	51,437	48,462	56,311	49,540	55,337	90,118	104,263	109,688	884,875
	Australia	2,766	2,518	1,637	1,815	993	793	1,175	1,118	938	1,782	2,733	2,618	20,886
	China	54,644	50,220	63,541	55,927	39,115	35,177	42,896	34,563	44,763	67,246	74,564	76,529	639,185
	India	448	432	279	455	302	256	278	289	210	365	518	511	4,343
	Japan	3,855	4,008	2,447	2,636	1,971	1,898	1,791	2,575	1,983	2,504	3,232	3,164	32,064
	Korea	21,488	21,600	9,779	12,414	7,761	8,987	9,313	9,768	6,330	16,751	21,423	24,957	170,571
	New Zealand	456	318	267	302	194	169	249	227	195	360	235	230	3,202
	Taiwan	421	433	343	437	297	269	243	334	204	392	448	508	4,329
	Others	969	1,111	906	847	804	913	366	666	714	718	1,110	1,171	10,295
Europe		18,681	21,190	15,138	14,705	8,933	10,189	9,472	9,286	7,515	11,781	18,832	15,472	161,194
	Austria	346	313	288	233	140	278	153	157	137	171	359	299	2,874
	Belgium	510	517	346	339	180	274	369	225	240	344	618	409	4,371
	Denmark	312	438	411	353	202	243	180	151	183	210	263	252	3,198
	Finland	281	260	159	173	139	142	108	107	95	127	221	211	2,023
	France	3,918	4,679	3,240	3,192	1,889	2,218	2,191	2,347	1,630	2,850	4,901	3,705	36,760
	Germany	2,539	3,225	2,281	1,961	1,327	1,504	1,357	1,343	1,234	1,917	2,829	2,259	23,776
	Greece	47	42	72	42	13	26	21	21	18	25	64	90	481
	Italy	1,000	1,167	861	772	286	392	389	415	294	468	746	747	7,537
	Netherlands	695	536	535	640	273	355	348	380	212	380	631	515	5,500
	Norway	241	405	227	243	115	177	134	98	98	133	263	200	2,334
	Russia	1,592	1,588	1,142	1,022	560	575	474	503	480	920	1,014	1,116	10,986
	Spain	612	541	581	372	227	256	304	299	228	330	526	313	4,589
	Sweden	573	523	334	321	145	210	134	145	118	221	356	403	3,483
	Switzerland	1,290	1,146	684	681	326	407	432	351	273	464	1,022	880	7,956
	United Kingdom	2,816	3,276	2,522	3,110	1,862	1,907	1,783	1,653	1,362	2,044	2,920	2,468	27,723
	Others	1,909	2,534	1,455	1,251	1,249	1,225	1,095	1,091	913	1,177	2,099	1,605	17,603
Americas		6,299	7,343	5,450	6,162	3,866	4,525	3,903	3,413	2,707	4,954	7,677	7,928	64,227
	Canada	1,447	1,804	1,398	1,356	907	955	772	704	518	863	1,413	1,330	13,467
	USA	3,893	4,097	2,932	3,707	1,943	2,682	2,291	1,892	1,455	3,165	5,075	5,633	38,765
	Others	959	1,442	1,120	1,099	1,016	888	840	817	734	926	1,189	965	11,995
Africa and Middle East		918	1,081	937	1,148	824	875	804	737	815	988	1,162	1,157	11,446
	Israel	274	367	191	111	39	95	36	44	159	231	290	291	2,128
	Others	644	714	746	1,037	785	780	768	693	656	757	872	866	9,318

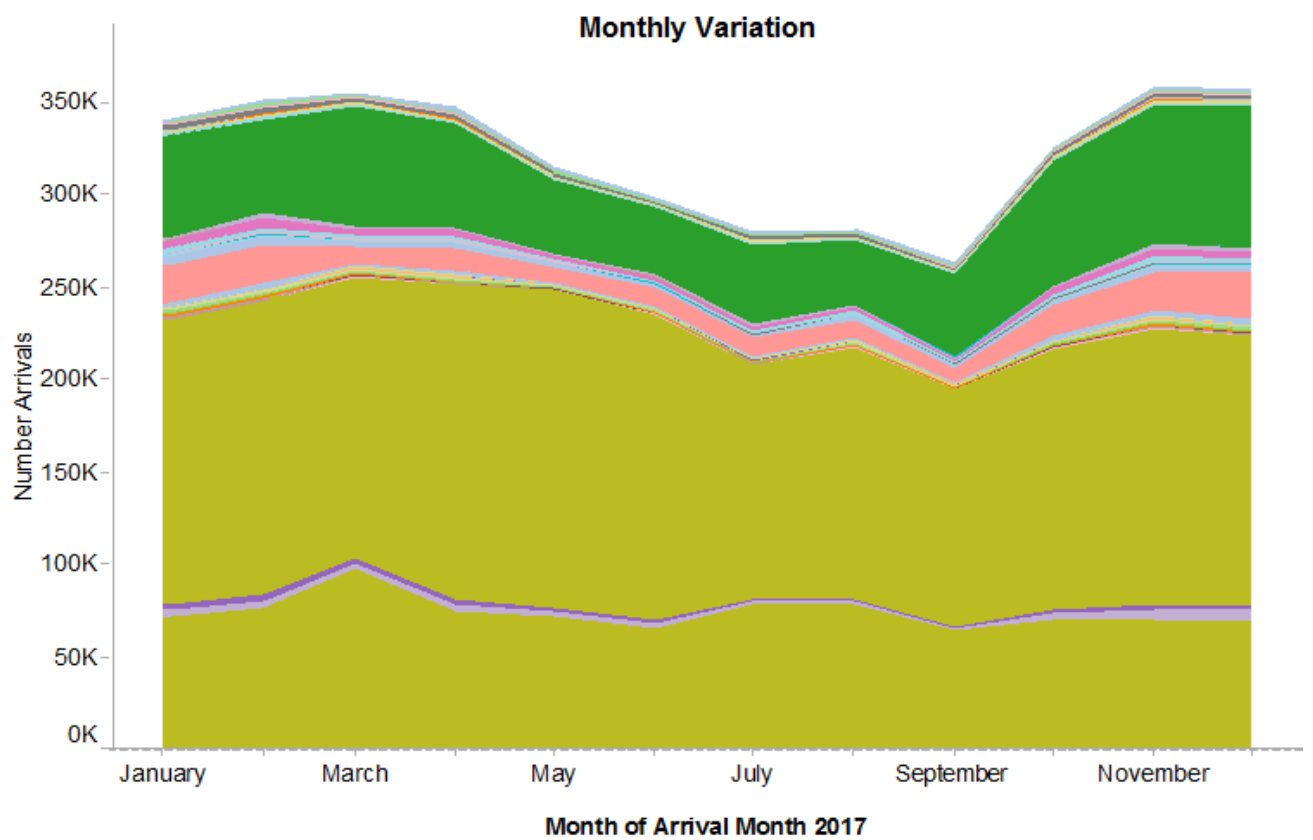
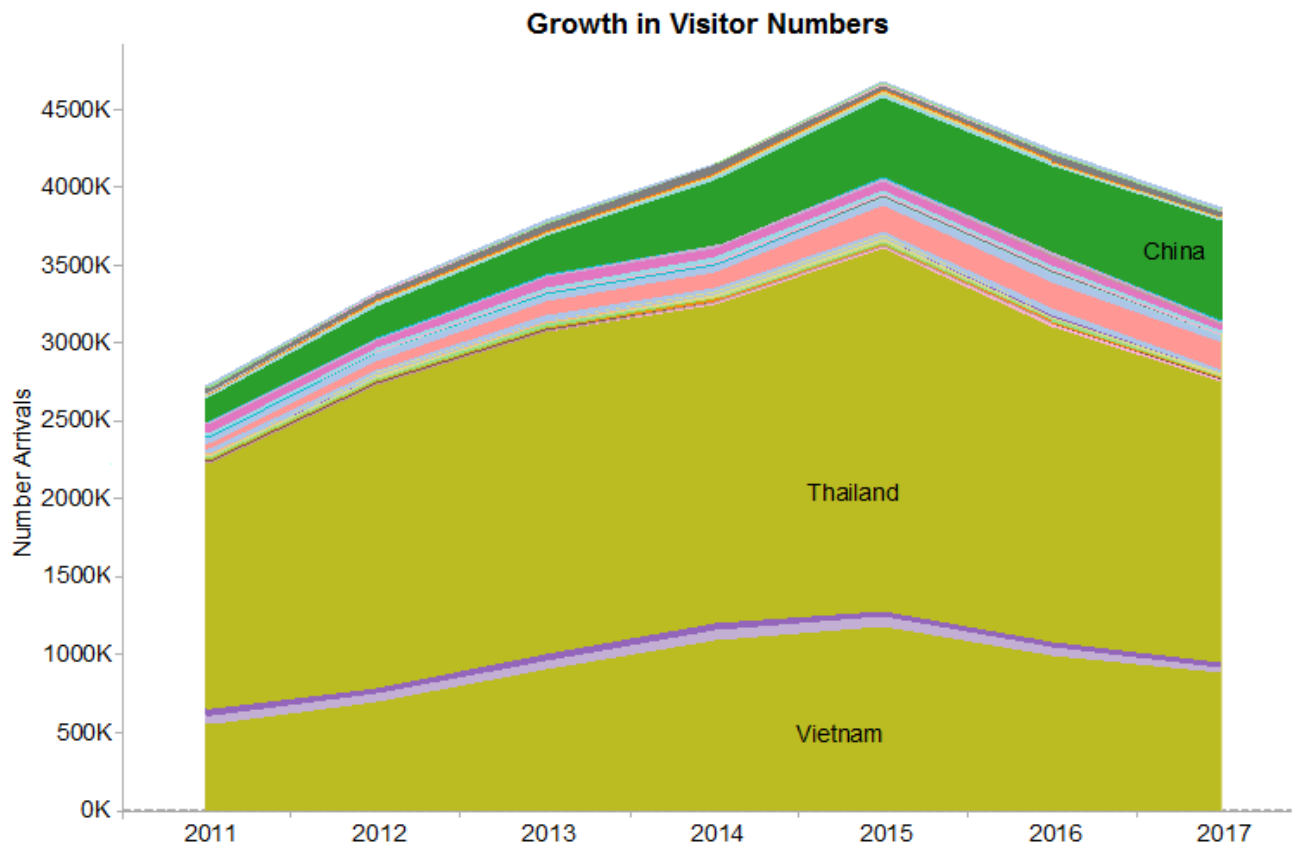
Table 7: Arrivals of non – resident visitors at national borders, by month

Months	2013	2014	2015	2016	2017
Grand Total	3,779,490	4,158,719	4,684,429	4,239,047	3,868,838
1st QUARTER	1,003,579	1,113,319	1,284,896	1,248,017	1,045,329
January	345,411	367,980	436,358	400,140	339,768
February	349,459	384,664	426,697	450,902	350,344
March	308,709	360,675	421,841	396,975	355,217
2nd QUARTER	901,807	938,590	1,040,693	1,002,972	959,209
April	331,717	366,610	416,628	363,538	346,559
May	296,938	339,580	325,095	343,162	314,344
June	273,152	232,400	298,970	296,272	298,306
3rd QUARTER	887,478	990,022	1,158,084	922,826	822,418
July	297,239	316,631	337,805	296,242	278,971
August	308,065	304,725	358,358	323,603	280,983
September	282,174	368,666	461,921	302,981	262,464
4th QUARTER	986,626	1,116,788	1,200,756	1,065,232	1,041,882
October	326,479	382,064	400,054	336,863	325,574
November	331,423	365,824	420,650	367,964	358,997
December	328,724	368,900	380,052	360,405	357,311

Table 8: Tourist Arrivals by Month through Category, 2014-2017

Months	2014	2015	2016	2017			% ▽
				International	Regional	Total	17/16
Grand Total	4,158,719	4,684,429	4,239,047	525,099	3,343,739	3,868,838	-8.73
January	367,980	436,358	400,140	59,275	280,493	339,768	-15.09
February	384,664	426,697	450,902	64,327	286,017	350,344	-22.30
March	360,675	421,841	396,975	39,964	315,253	355,217	-10.52
April	366,610	416,628	363,538	44,858	301,701	346,559	-4.67
May	339,580	325,095	343,162	29,002	285,342	314,344	-8.40
June	232,400	298,970	296,272	31,939	266,367	298,306	0.69
July	316,631	337,805	296,242	30,669	248,302	278,971	-5.83
August	304,725	358,358	323,603	31,113	249,870	280,983	-13.17
September	368,666	461,921	302,981	24,153	238,311	262,464	-13.37
October	382,064	400,054	336,863	44,588	280,986	325,574	-3.35
November	365,824	420,650	367,964	62,324	296,673	358,997	-2.44
December	368,900	380,052	360,405	62,887	294,424	357,311	-0.86

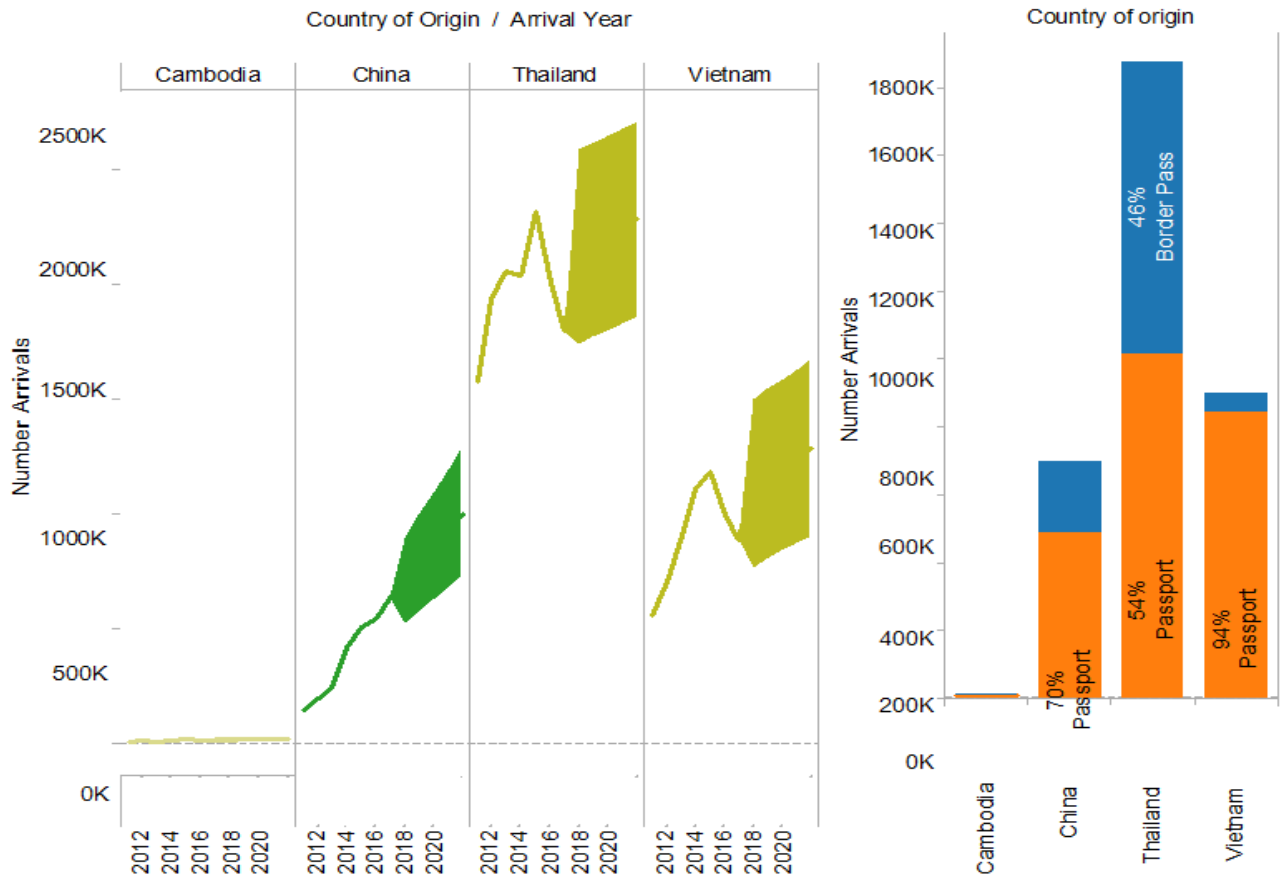
Graph 7: Origin and Growth in Visitors



Graph 8: Top Generating Markets

Top Markets (regional visitors) with forecast

Entry by Border Pass or Passport



Top Markets (excluding regional visitors) with forecast

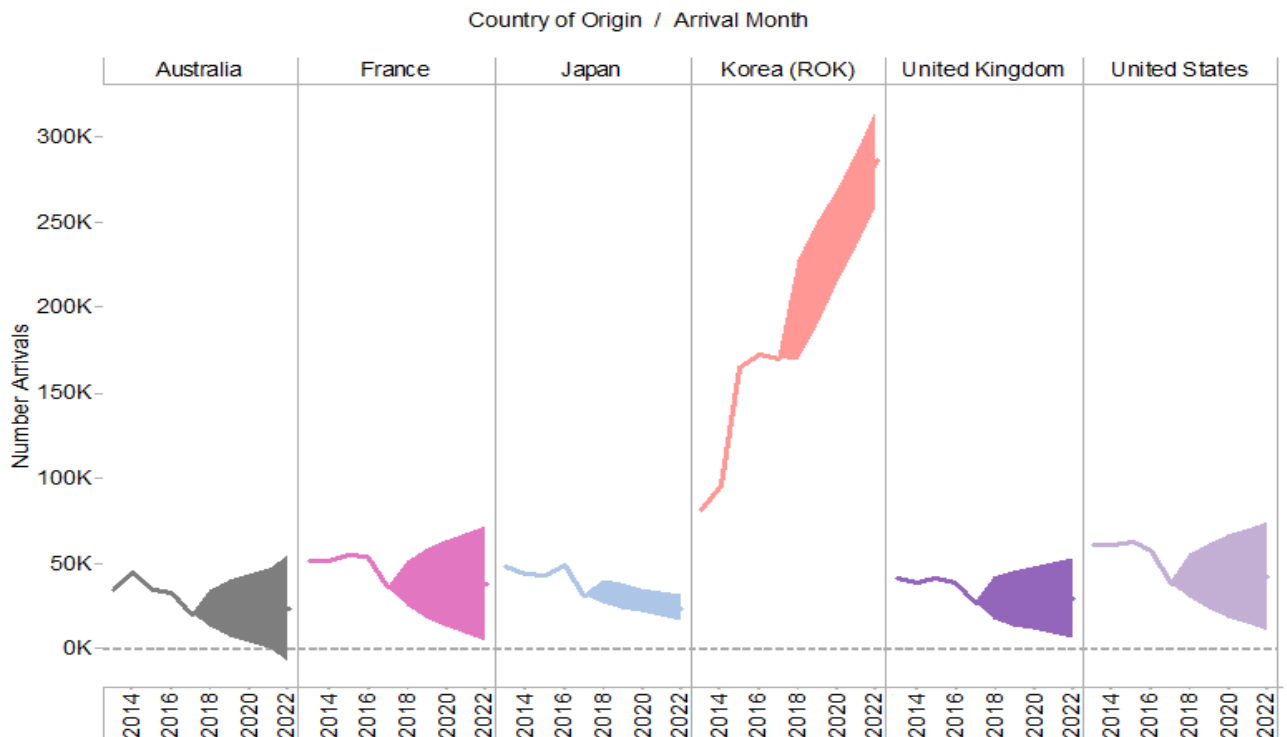


Table 9: Ranks Country by Tourist Expenditures, Not Total Arrivals.

Rank	2016	Number	% Δ	2017	Number	% Δ
1	Thailand	2,009,605	47	Thailand	1,797,803	46
2	Vietnam	998,400	24	Vietnam	891,643	23
3	Korea	173,260	4	China	639,185	17
4	China	545,493	13	Korea	170,571	4
5	USA	58,094	1	USA	38,765	1
6	France	54,953	1	France	36,760	1
7	Japan	49,191	1	Japan	32,064	1
8	UK	39,170	1	UK	27,723	1
9	Germany	34,018	1	Germany	23,776	1
10	Australia	33,077	1	Australia	20,886	1
11	Other	243,786	6	Other	189,662	5

Table 10: Tourist Arrivals by Port of Entry through Category, 2013-2017

Port of Entry	2013	2014	2015	2016	2017	Regional Visitors	Percent Share	Percent Change
Grand Total	3,779,490	4,158,719	4,684,429	4,239,047	3,868,838	2,914,263	% 100	% 17/16
Wattay Airport	303,601	381,127	387,586	421,792	364,714	-	8.60	-13.53
Savannakhet Airport	4,118	5,890	3,487	3,113	3,709	-	0.09	19.15
Pakse Airport	9,400	6,195	6,865	13,422	12,378	-	0.29	-7.78
Luang Prabang Airport	104,469	106,478	122,585	140,598	139,375	-	3.29	-0.87
Friendship Bridge I	1,051,560	1,149,706	1,222,595	1,035,911	863,642	719,037	22.32	-16.63
Thanaleng Railway Station	3,963	3,672	3,902	4,283	4,047	1,799	0.10	-5.51
Boten	203,957	278,228	373,026	385,264	493,308	476,922	12.75	28.04
Houei Xay	164,370	141,262	188,939	177,042	174,160	75,750	4.50	-1.63
Friendship Bridge II	824,670	797,290	787,506	637,295	517,903	486,325	13.39	-18.73
Dane Savanh	275,931	317,920	328,880	226,167	208,626	187,111	5.39	-7.76
Vang Tao	152,842	144,488	245,400	229,133	181,587	149,456	4.69	-20.75
Nong Nok Khian	19,018	18,404	24,579	37,370	28,915	8,077	0.75	-22.63
Nam Phao	117,408	167,807	245,793	207,546	168,933	161,812	4.37	-18.60
Pakxan	18,397	21,642	28,123	24,309	28,294	27,135	0.73	16.39
Friendship Bridge III	108,898	123,256	121,961	141,193	153,076	118,904	3.96	8.42
Thakek	27,722	43,147	46,709	44,299	30,681	30,681	0.79	-30.74
Naphao	135,644	153,466	175,348	178,995	141,574	135,268	3.66	-20.91
Nam Heuang Friendship Bridge	35,961	48,604	44,980	46,645	42,857	40,708	1.11	-8.12
Nam Ngeun	51,785	46,970	50,952	44,474	50,303	48,081	1.30	13.11
Phou dou	-	-	7,261	12,849	15,849	15,724	0.41	23.35
Nam Kanh	26,787	34,524	34,187	71,338	73,406	70,698	1.90	2.90
Nam Souy	15,547	14,733	16,171	17,327	16,943	15,334	0.44	-2.22
Pang Hok	20,968	18,744	20,387	25,865	33,983	27,157	0.88	31.39
Lam Tuai	-	-	3,067	12,277	6,420	6,407	0.17	-47.71
Phoukeua	102,474	135,166	194,140	100,540	64,044	62,109	1.66	-36.30
Lalai	-	-	-	-	50,109	49,769	1.30	100.00

Graph 9: Arrivals Year Border Point

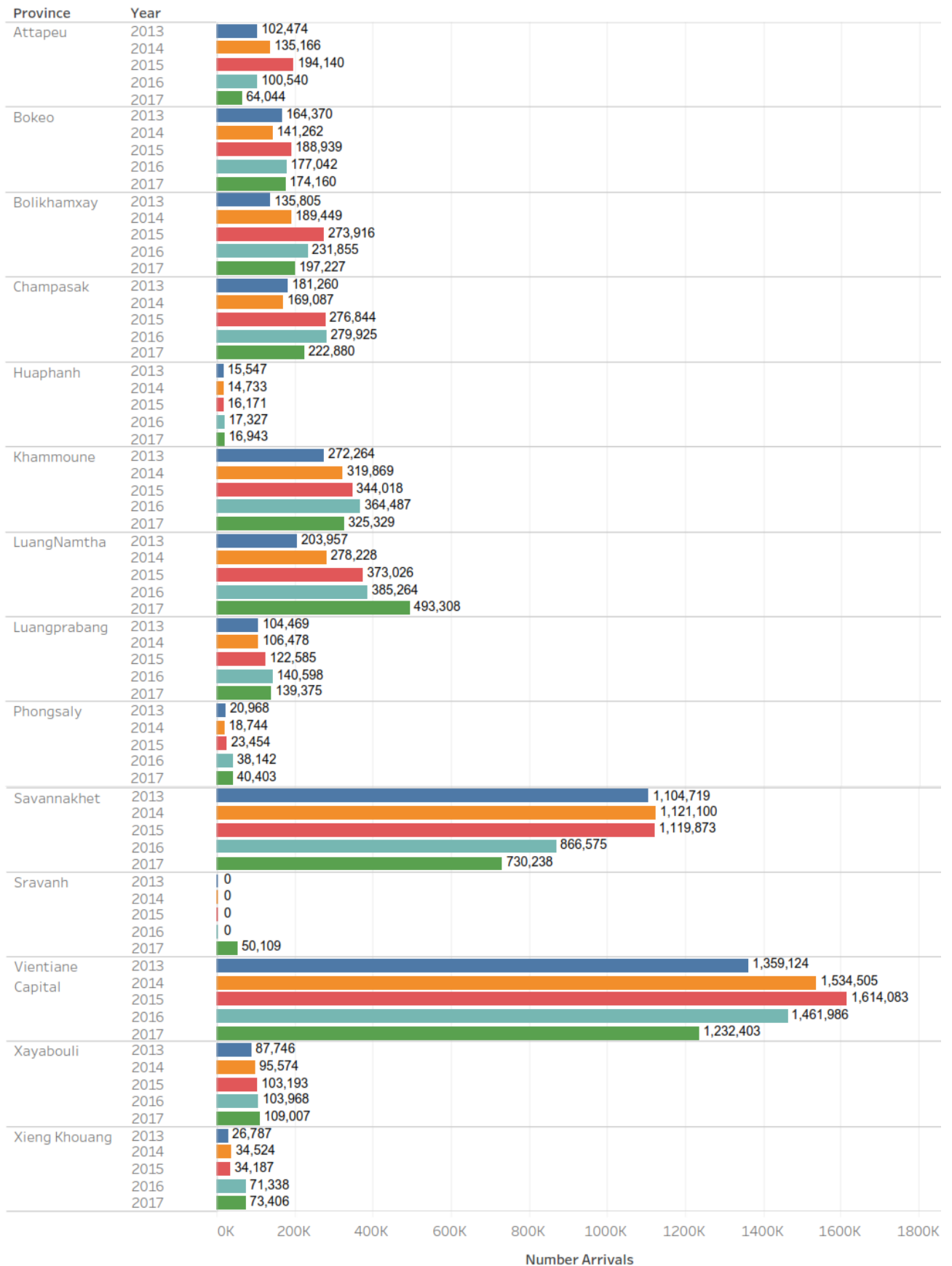


Table 11: Tourist Arrivals to Laos by Port of Entry in 2017

Region	Country	Port of Entry											
		Attapeu	Bokeo	Bolikhamsay		Champasak			Huaphanh	Khammoune			Luang Prabang
		Phou Keua	Houei Xay	Pakxan	Namphao	Vang Tao	Pakse Airport	Nong Nok Khian	Nam Souy	Mittha phab Bridge III	Thakhek	Naphao	Luang Prabang Airport
Grand Total		64,044	174,160	28,294	168,933	181,587	12,378	28,915	16,943	153,076	30,681	141,574	139,375
ASEAN		62,730	83,901	28,161	164,039	165,126	2,868	19,459	15,410	148,075	30,681	141,274	13,724
	Brunei	-	-	5	3	2	-	-	-	-	-	-	46
	Cambodia	27	156	80	37	970	135	8,077	6	178	-	-	86
	Indonesia	58	102	-	27	43	46	88	3	48	-	-	74
	Malaysia	8	1,594	100	57	449	105	105	6	403	-	2	222
	Myanmar	20	101	2	94	77	23	18	-	41	-	-	44
	Philippines	8	227	47	336	227	65	194	26	129	-	13	156
	Singapore	6	383	6	13	94	102	44	6	97	-	226	342
	Thailand	494	75,750	27,135	1,660	149,456	490	290	29	118,904	30,681	5,765	10,710
	Vietnam	62,109	5,588	786	161,812	13,808	1,902	10,643	15,334	28,275	-	135,268	2,044
Asia and Pacific		739	63,344	92	1,264	6,358	3,104	2,923	622	1,855	-	198	39,842
	Australia	28	1,725	-	121	552	677	499	83	256	-	3	5,387
	China	507	57,413	4	394	1,261	606	1,475	428	787	-	144	11,598
	India	74	110	-	65	240	163	71	10	105	-	4	216
	Japan	30	1,190	61	245	1,468	515	221	19	404	-	28	4,012
	Korea	56	1,705	25	285	2,160	512	313	46	209	-	5	11,205
	New Zealand	1	618	-	29	113	80	65	18	26	-	-	913
	Taiwan	23	157	1	66	71	198	80	17	44	-	4	793
	Others	20	426	1	59	493	353	199	1	24	-	10	5,718
Europe		448	22,044	34	2,899	7,039	4,091	5,330	709	2,059	-	83	53,227
	Austria	10	506	-	35	173	120	212	11	80	-	-	686
	Belgium	5	766	-	43	247	207	205	16	66	-	8	874
	Denmark	-	677	-	43	119	82	150	16	23	-	2	935
	Finland	26	210	-	38	114	17	83	4	44	-	5	650
	France	103	3,587	14	363	2,545	1,221	1,369	165	611	-	13	9,843
	Germany	85	2,983	6	500	1,333	510	781	174	483	-	31	9,767
	Greece	-	50	-	37	4	43	5	1	-	-	-	186
	Italy	14	840	-	60	274	157	278	23	85	-	-	3,646
	Netherlands	2	1,828	1	196	137	54	273	50	92	-	1	881
	Norway	7	333	-	43	147	36	47	2	37	-	-	708
	Russia	71	334	-	126	95	31	92	35	46	-	6	3,807
	Spain	19	957	-	71	102	122	320	18	34	-	7	1,781
	Sweden	6	633	-	62	190	51	110	8	72	-	1	717
	Switzerland	20	1,927	10	58	518	198	293	21	163	-	-	756
	United Kingdom	7	3,408	2	986	674	651	860	106	167	-	6	10,300
	Others	73	3,005	1	238	367	591	252	59	58	-	3	7,690
Americas		108	4,038	7	573	2,755	2,166	868	196	1,021	-	19	25,666
	Canada	12	872	2	183	458	487	294	33	187	-	2	6,290
	USA	72	2,539	5	273	2,144	1,376	406	115	797	-	12	10,702
	Others	24	627	-	117	153	303	168	48	37	-	5	8,674
Africa and Middle East		19	833	-	158	309	149	335	6	66	-	-	6,916
	Israel	14	444	-	69	136	46	166	2	13	-	-	513
	Others	5	389	-	89	173	103	169	4	53	-	-	6,403

Port of Entry														
Luang Namtha	Phongsaly		Savannakhet			Sravanh	Vientiane			Xayabouli		Xieng Khouang	Total	
Boten	Lam Tuai	Pang Hok	Mittha phab Bridge II	Dane Savanh	Savanh Airport	Lalai	Mittha phab Bridge I	Thanaleng Railway Station	Wattay Airport	Nam Heuang Bridge	Nam Ngeun	Phou dou	Nam Kanh	2017
493,308	6,420	33,983	517,903	208,626	3,709	50,109	863,642	4,047	364,714	42,857	50,303	15,849	73,406	3,868,838
14,197	-	27,708	504,881	203,259	1,192	49,940	820,229	2,400	71,194	41,251	48,711	15,818	70,868	2,747,096
37	-	12	-	-	-	-	133	-	104	-	-	-	-	342
9	-	22	853	26	16	3	2,111	11	2,181	100	10	7	7	15,108
8	-	28	97	19	11	1	881	31	1,654	1	18	1	2	3,241
671	-	13	981	101	100	1	4,570	82	9,323	111	96	4	10	19,114
78	-	42	99	58	11	-	1,212	70	833	5	16	1	3	2,848
7	-	55	988	326	24	-	4,152	309	2,741	48	48	-	42	10,168
93	-	40	142	62	41	1	1,136	70	3,882	13	25	1	4	6,829
13,177	-	339	486,325	15,556	924	165	719,037	1,799	34,502	40,708	48,081	15,724	102	1,797,803
117	-	27,157	15,396	187,111	65	49,769	86,997	28	15,974	265	417	80	70,698	891,643
477,639	6,412	1,081	4,481	2,007	1,178	120	31,167	968	237,475	745	606	13	642	884,875
105	-	199	737	252	113	-	1,268	26	8,689	67	57	1	41	20,886
476,922	6,407	81	622	743	407	27	3,968	58	74,569	209	391	4	160	639,185
6	-	64	71	87	101	1	657	12	2,256	6	12	-	12	4,343
220	-	121	1,400	284	412	7	6,298	480	14,351	83	83	3	129	32,064
190	-	126	1,180	509	44	58	18,039	328	132,972	342	49	3	210	170,571
18	-	205	175	41	26	-	84	5	746	3	2	2	32	3,202
147	5	21	87	45	60	26	235	5	2,176	32	5	-	31	4,329
31	-	264	209	46	15	1	618	54	1,716	3	7	-	27	10,295
906	-	4,217	5,982	2,408	816	34	9,409	495	36,328	533	540	16	1,545	161,194
17	-	187	77	30	4	-	29	17	596	13	23	-	48	2,874
30	-	118	155	39	37	-	278	15	1,204	19	17	-	22	4,371
4	-	142	165	44	21	-	74	4	641	17	11	-	28	3,198
23	-	77	134	61	19	2	36	8	409	11	8	-	44	2,023
227	-	1,052	1,278	681	324	19	1,635	134	11,009	133	157	2	275	36,760
177	-	522	635	359	67	8	119	47	4,687	121	115	9	257	23,776
4	-	60	-	-	-	-	6	-	64	-	2	-	19	481
32	-	200	130	62	16	-	145	7	1,459	11	33	-	65	7,537
28	-	220	195	90	72	-	100	13	1,156	30	20	-	61	5,500
4	-	72	240	18	7	-	26	5	567	9	2	-	24	2,334
86	-	207	390	125	7	-	4,246	64	1,157	11	11	-	39	10,986
18	-	144	46	64	14	-	24	11	777	6	12	-	42	4,589
14	-	78	265	50	15	-	159	32	942	24	11	-	43	3,483
77	-	162	289	95	60	4	1,202	47	1,950	25	33	5	43	7,956
97	-	522	1,609	504	91	1	621	53	6,528	92	63	-	375	27,723
68	-	454	374	186	62	-	709	38	3,182	11	22	-	160	17,603
514	7	732	2,320	803	500	14	2,512	148	18,218	320	439	2	281	64,227
99	-	214	285	271	65	3	410	29	3,012	26	169	1	63	13,467
379	-	219	1,966	516	431	11	1,899	115	14,100	280	261	1	146	38,765
36	7	299	69	16	4	-	203	4	1,106	14	9	-	72	11,995
52	1	245	239	149	23	1	325	36	1,499	8	7	-	70	11,446
18	-	129	28	30	1	-	22	7	422	4	-	-	64	2,128
34	1	116	211	119	22	1	303	29	1,077	4	7	-	6	9,318

Table 12: Number of Domestic Tourists, 2013-2017

Province	2013	2014	2015	2016	2017
Grand Total	2,027,642	2,077,718	2,313,339	1,986,738	2,236,914
Attapeu	14,032	16,811	45,408	27,571	28,840
Bokeo	24,237	25,463	34,089	42,561	48,565
Bolikhamxay	54,102	55,885	58,957	60,875	60,950
Champasak	254,971	318,760	379,375	399,692	479,838
Houaphanh	14,669	11,160	13,525	12,642	17,707
Khammouane	154,851	159,232	160,882	163,799	135,516
Luang Prabang	125,354	152,328	161,712	173,733	182,470
Luang Namtha	192,388	119,300	170,506	14,754	242,883
Oudomxay	74,143	85,190	88,383	78,148	71,597
Phongsaly	79,497	79,554	75,416	40,063	60,807
Saravanh	56,950	64,486	64,100	65,025	66,700
Savannakhet	459,673	426,246	448,411	335,279	341,364
Sekong	6,115	11,369	15,595	13,121	10,764
Vientiane Capital	303,980	300,878	136,222	65,680	55,953
Vientiane Province	126,976	136,088	345,772	363,061	353,874
Xaisomboun	N/A	20,144	17,192	19,022	15,272
Xaiyabouli	78,492	85,598	86,150	99,892	15,928
Xieng Khouang	7,212	9,226	11,644	11,820	47,886

Table 13: International Visitors by Province, 2013-2017

Province	2013	2014	2015	2016	2017
Grand Total	5,567,702	5,963,491	6,947,930	6,783,874	6,372,514
Attapeu	113,151	153,846	160,212	130,773	71,924
Bokeo	207,786	168,696	260,123	219,603	207,864
Bolikhamxay	139,031	184,658	279,605	231,920	181,710
Champasak	493,180	535,413	611,244	621,870	831,779
Houaphanh	32,315	27,848	34,493	50,039	50,154
Khammouane	427,918	472,906	519,451	538,027	464,584
Luang Prabang	342,661	378,999	531,327	643,319	472,942
Luang Namtha	305,608	380,473	543,542	531,366	600,369
Oudomxay	172,731	102,050	215,448	192,496	186,351
Phongsaly	57,143	69,836	82,103	103,583	144,012
Saravanh	69,524	78,534	86,420	88,325	92,550
Savannakhet	1,167,154	1,078,334	1,120,021	866,630	724,243
Sekong	25,175	26,509	30,382	34,024	38,429
Vientiane Capital	1,445,345	1,630,516	1,737,979	1,643,692	1,347,866
Vientiane Province	445,636	504,049	561,855	589,948	592,650
Xaisomboun	N/A	22,259	22,137	26,465	15,831
Xaiyabouli	87,776	96,131	99,928	197,628	218,995
Xieng Khouang	35,568	52,434	51,660	74,166	130,261

Graph 10: Out-going Laos Travelers

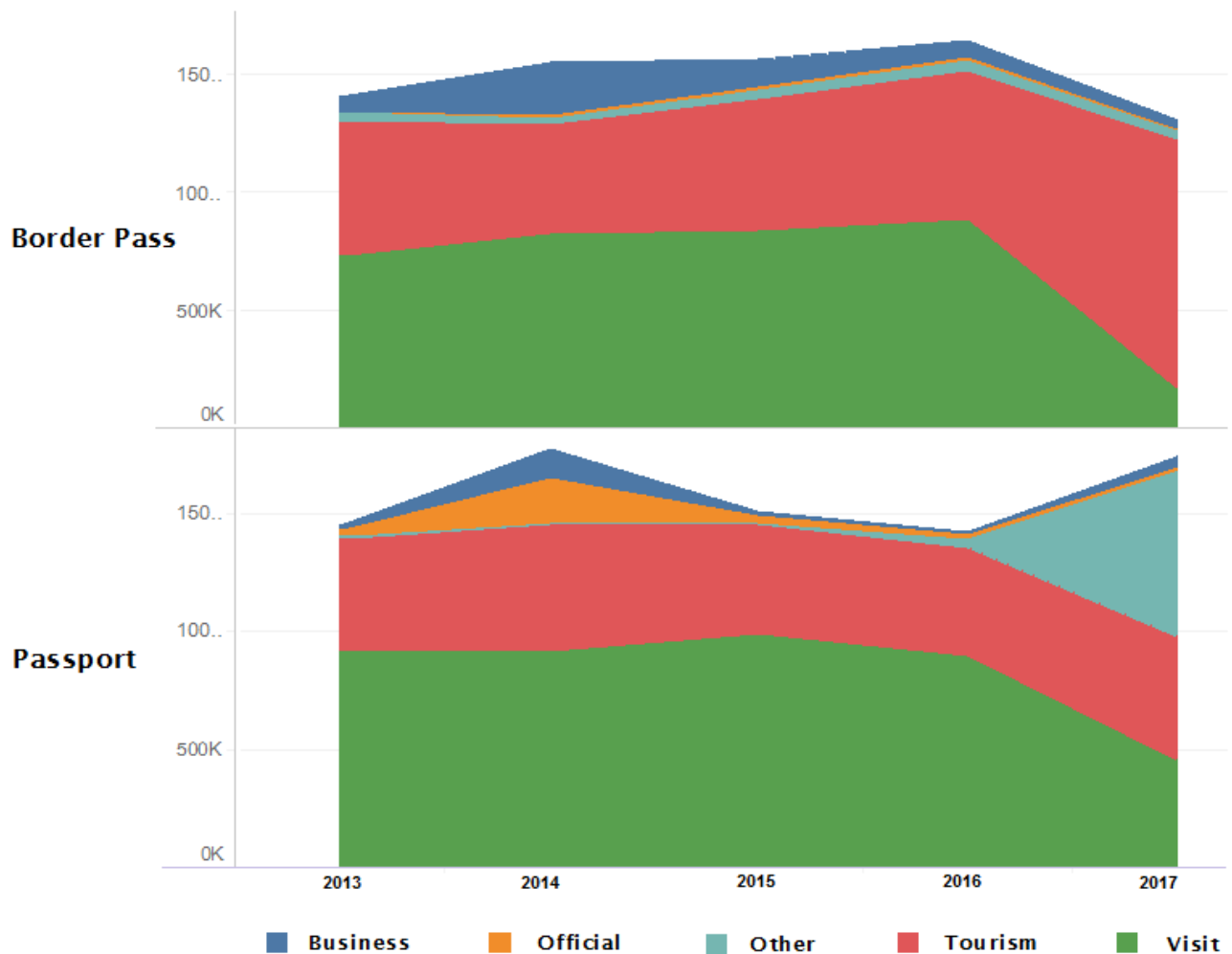


Table 14: Out-going Lao Travelers, 2013-2017

Border Check Point	2013	2014	2015	2016	2017	% ▽
Grand Total	2,857,345	3,319,702	3,066,525	3,058,815	3,049,152	-0.32%
Attapeu	4,391	1,727	7,497	5,249	5,569	6%
Bokeo	47,189	26,558	34,576	54,223	43,222	-20%
Bolikhamstay	71,540	93,157	102,043	105,683	103,780	-2%
Champasak	118,425	107,131	157,069	216,080	260,246	20%
Huaphanh	7,519	3,737	3,957	5,617	2,293	-59%
Khammouane	459,345	438,942	495,225	495,540	393,197	-21%
Luangnamtha	223,741	129,883	162,989	130,575	113,235	-13%
Luangprabang	2,708	1,960	1,998	1,890	1,801	-5%
Phongsaly	2,541	1,906	3,967	4,756	4,721	-1%
Sravanh					11,384	
Savannakhet	368,805	846,053	347,932	329,345	389,178	18
Friendship bridge I	1,405,251	1,534,970	1,570,894	1,543,693	1,535,634	-1%
Xayabouli	140,987	121,991	170,153	159,343	174,752	10%
Xiengkhouang	4,903	11,687	8,225	6,821	10,140	49%

Table 15: Room Occupancy Rates by Province, 2010-2017

Province	2010	2011	2012	2013	2014	2015	2016	2017
Average	54%	56%	57%	55%	54%	57%	51%	54%
Attapeu	48%	44%	46%	49%	43%	52%	39%	41%
Bokeo	56%	62%	63%	65%	44%	56%	47%	50%
Bolikhamxay	57%	55%	52%	46%	42%	45%	42%	45%
Champassak	63%	68%	62%	60%	55%	56%	45%	56%
Houaphanh	50%	55%	54%	48%	45%	51%	43%	46%
Khammouane	52%	50%	51%	71%	75%	71%	75%	72%
Luang Namtha	55%	56%	54%	49%	57%	56%	30%	48%
Luang Prabang	63%	68%	69%	70%	71%	73%	75%	71%
Oudomxay	58%	55%	58%	53%	50%	56%	52%	54%
Phongsaly	60%	55%	56%	44%	40%	46%	39%	44%
Saravanh	50%	56%	57%	52%	48%	53%	65%	69%
Savannakhet	68%	60%	58%	58%	69%	71%	53%	54%
Sekong	49%	53%	51%	41%	55%	48%	47%	52%
Vientiane Capital	65%	63%	67%	72%	73%	74%	56%	59%
Vientiane province	60%	64%	62%	63%	60%	65%	62%	65%
Xaisomboun	N/A	N/A	N/A	N/A	49%	48%	45%	43%
Xayabouli	52%	57%	53%	43%	41%	47%	44%	46%
Xieng Khouang	54%	56%	58%	57%	54%	56%	53%	57%

Table 16: Number of Hotels, Guesthouses, Resorts, Restaurants and Entertainment Establishments, 2016-2017

Province	Type								Total 2016	Total 2017
	Hotel		GH, Resort		Restaurant		Entertainment			
	2016	2017	2016	2017	2016	2017	2016	2017		
Total	545	569	2,452	2,165	2,969	2,360	365	249	6,331	5,343
Attapeu	12	12	58	47	60	46	14	14	144	119
Bokeo	16	16	82	69	136	39	60	5	294	129
Bolikhamxay	35	35	116	91	150	154	16	19	317	299
Champasack	59	62	229	173	40	44	10	9	338	288
Houaphanh	10	10	68	58	225	122	2	3	305	193
Khammouane	20	20	126	115	308	171	17	11	471	317
Luang Namtha	9	8	98	99	147	161	11	17	265	285
Luang Prabang	49	53	287	260	457	290	27	19	820	622
Oudomxay	21	19	92	88	265	209	18	6	396	322
Phongsaly	7	9	56	62	173	198	11	9	247	278
Saravanh	4	4	46	50	112	48	4	2	166	104
Savannakhet	45	45	199	160	143	158	8	8	395	371
Sekong	11	10	40	42	36	53	22	28	109	133
Vientiane Capital	207	218	426	241	93	111	83	42	809	612
Vientiane Province	20	23	267	289	271	274	26	32	584	618
Xaisomboun	1	1	38	37	83	121	0	1	122	160
Xaiyabouli	7	7	116	174	77	58	20	18	220	257
Xieng Khouang	12	17	108	110	193	103	16	6	329	236

Table 17: Number of Accommodation Establishments, and Rooms 2011-2017

Province	Number of Establishments							Number of Rooms						
	2011	2012	2013	2014	2015	2016	2017	2011	2012	2013	2014	2015	2016	2017
Grand Total	1,926	2,030	2,359	2,426	2,449	2,527	2,734	32,960	35,857	37,808	44,714	48,386	46,513	50,600
Attapeu	28	31	42	50	58	58	59	484	521	609	760	703	930	960
Bokeo	49	50	66	74	77	80	85	630	654	853	1,049	1,084	1,273	1,332
Bolikhamxay	56	56	105	108	113	120	126	955	1,509	1,665	2,011	2,160	2,248	2,388
Champasack	203	215	225	241	232	224	235	3,250	3,215	4,072	4,260	3,602	3,788	4,059
Houaphanh	49	49	59	61	66	67	68	486	486	730	691	827	877	883
Khammouane	85	90	91	111	127	127	135	1,230	1,321	1,119	1,726	2,798	1,960	2,174
Luang Namtha	77	75	82	94	97	98	107	1,086	1,001	1,269	1,349	1,384	1,614	1,545
Luang Prabang	279	296	380	312	299	297	313	3,241	3,529	4,126	5,634	5,005	4,844	5,368
Oudomxay	77	77	82	89	90	101	107	1,124	1,124	1,396	1,598	1,619	1,764	1,906
Phongsaly	44	46	49	54	57	64	71	381	444	506	571	624	720	746
Saravane	32	33	51	50	46	47	54	420	504	555	441	373	373	517
Savannakhet	142	175	180	189	196	204	205	2,702	3,690	1,662	4,268	4,351	4,512	4,521
Sekong	15	15	38	38	40	40	52	242	242	609	540	456	456	628
Vientiane Capital	392	398	423	430	427	429	459	10,948	11,416	11,497	11,923	12,028	12,704	13,030
Vientiane Province	272	288	275	285	265	269	312	4,081	4,369	4,395	4,952	8,153	4,321	5,592
Xaisomboun	N/A	N/A	N/A	36	38	38	38	N/A	N/A	N/A	152	337	336	336
Xaiyabouli	97	107	114	106	113	150	181	1,208	1,340	1,437	1,384	1,388	1,846	2,257
Xieng Khouang	29	29	97	98	108	114	127	492	492	1,308	1,405	1,494	1,947	2,358

Table 18: Number of Hotels, Guest Houses, Rooms and Beds, in 2017

Province	Hotels			Guest Houses and Resort			Total		
	No	Room	Bed	No	Room	Bed	No	Room	Beds
Total	569	21,836	30,104	2,165	28,764	36,142	2,734	50,600	66,246
Attapeu	12	457	660	47	503	646	59	960	1,306
Bokeo	16	531	747	69	801	976	85	1,332	1,723
Bolikhamxay	35	1055	1490	91	1333	1716	126	2,388	3,206
Champasack	62	2299	3714	173	1760	2162	235	4,059	5,876
Houaphanh	10	220	298	58	663	880	68	883	1,178
Khammouane	20	735	977	115	1439	1818	135	2,174	2,795
Luang Namtha	8	278	458	99	1267	1661	107	1,545	2,119
Luang Prabang	53	2504	3426	260	2864	4203	313	5,368	7,629
Oudomxay	19	779	1115	88	1127	1503	107	1,906	2,618
Phongsaly	9	219	337	62	527	796	71	746	1,133
Saravane	4	84	130	50	433	618	54	517	748
Savannakhet	45	2031	2831	160	2490	2992	205	4,521	5,823
Sekong	10	247	312	42	381	441	52	628	753
Vientiane Capital	218	8383	10572	241	4647	5259	459	13,030	15,831
Vientiane Province	23	1080	1663	289	4512	5712	312	5,592	7,375
Xaisomboun	1	17	28	37	319	342	38	336	370
Xaiyabouli	7	236	326	174	2021	2270	181	2,257	2,596
Xieng Khouang	17	681	1020	110	1677	2147	127	2,358	3,167

Table 19: Visitor Arrivals to Luang Prabang Province

Region	Country	2014		2015		2016		2017		%
Grand Total		531,327		607,584		643,319		655,412		2
Laos		152,328		161,712		173,733		182,470		5
Foreigner		378,999	100%	445,872	100%	469,586	100%	472,942	100%	1
ASEAN		65,163	17.19	67,979	15.25	70,458	15.00	73,719	15.59	5
	Brunei	326	0.09	28	0.01	47	0.01	56	0.01	19
	Cambodia	563	0.15	618	0.14	708	0.15	737	0.16	4
	Indonesia	527	0.14	12	0.00	36	0.01	146	0.03	306
	Malaysia	2,241	0.59	36	0.01	97	0.02	124	0.03	28
	Myanmar	346	0.09	426	0.10	437	0.09	454	0.10	4
	Philippines	1,326	0.35	121	0.03	146	0.03	153	0.03	5
	Singapore	3,350	0.88	46	0.01	143	0.03	162	0.03	13
	Thailand	52,120	13.75	61,201	13.73	61,406	13.08	64,372	13.61	5
	Vietnam	4,364	1.15	5,491	1.23	7,438	1.58	7,515	1.59	1
Asia and Pacific		98,468	25.98	133,355	29.91	139,039	29.61	136,530	28.87	-2
	Australia	18,482	4.88	19,542	4.38	21,672	4.62	15,883	3.36	-27
	China	36,923	9.74	60,793	13.63	63,290	13.48	66,392	14.04	5
	India	425	0.11	89	0.02	143	0.03	247	0.05	73
	Japan	18,042	4.76	19,149	4.29	18,072	3.85	17,930	3.79	-1
	Korea	17,732	4.68	33,582	7.53	34,178	7.28	34,578	7.31	1
	New Zealand	3,528	0.93	124	0.03	482	0.10	257	0.05	-47
	Taiwan	689	0.18	64	0.01	1,167	0.25	1,189	0.25	2
	Others	2,647	0.70	12	0.00	35	0.01	54	0.01	54
Europe		153,226	40.43	171,884	38.55	178,134	37.93	178,784	37.80	0
	Austria	3,164	0.83	3,738	0.84	3,741	0.80	3,415	0.72	-9
	Belgium	795	0.21	963	0.22	1,035	0.22	1,127	0.24	9
	Denmark	3,839	1.01	3,851	0.86	3,869	0.82	3,582	0.76	-7
	Finland	5,382	1.42	5,397	1.21	5,462	1.16	4,530	0.96	-17
	France	28,590	7.54	29,936	6.71	31,330	6.67	31,468	6.65	0
	Germany	27,094	7.15	28,891	6.48	30,144	6.42	30,749	6.50	2
	Greece	683	0.18	994	0.22	843	0.18	859	0.18	2
	Italy	9,640	2.54	12,935	2.90	12,958	2.76	13,156	2.78	2
	Netherlands	7,336	1.94	8,416	1.89	8,497	1.81	8,953	1.89	5
	Norway	3,264	0.86	4,316	0.97	4,364	0.93	4,382	0.93	0
	Russia	10,742	2.83	14,261	3.20	14,605	3.11	14,874	3.14	2
	Spain	4,247	1.12	6,292	1.41	6,893	1.47	7,147	1.51	4
	Sweden	3,592	0.95	4,670	1.05	4,851	1.03	4,899	1.04	1
	Switzerland	7,961	2.10	8,994	2.02	9,246	1.97	9,367	1.98	1
	United Kingdom	31,649	8.35	32,258	7.23	33,568	7.15	33,965	7.18	1
	Others	5,248	1.38	5,972	1.34	6,728	1.43	6,311	1.33	-6
Americas		55,296	14.59	64,762	14.52	72,780	15.50	74,407	15.73	2
	Canada	18,648	4.92	20,642	4.63	21,856	4.65	21,937	4.64	0
	USA	25,859	6.82	27,594	6.19	28,560	6.08	29,178	6.17	2
	Others	10,789	2.85	16,526	3.71	22,364	4.76	23,292	4.92	4
Africa and Middle East		6,846	1.81	7,892	1.77	9,175	1.95	9,502	2.01	4
	Israel	4,734	1.25	5,198	1.17	5,214	1.11	5,324	1.13	2
	Others	2,112	0.56	2,694	0.60	3,961	0.84	4,178	0.88	5

Part II: International Visitor Survey

The results in this section of the report relate to information obtained from 2,591 international visitors surveyed during the period April-December 2017 at Wattay International Airport, Friendship Bridge, Luangprabang and Champassack Provinces. The international visitors who were randomly interviewed represent all tourist arrivals to Laos.

Table 20: Profile of International Tourist Arrivals to Laos, 2012 to 2017

CHARACTERISTIC	2012	2013	2014	2015	2016	2017
MODE OF ARRIVAL	100%	100%	100%	100%	100%	100%
Air	43	32.4	29.3	28.4	25.8	26.4
Land	57	67.6	70.7	71.6	74.2	73.6
SEX	100%	100%	100%	100%	100%	100%
Male	46	49.6	55	54.3	53.4	56.7
Female	54	50.4	45	45.7	46.6	43.3
AGE GROUP	100%	100%	100%	100%	100%	100%
15 to 19	2.6	4.7	3.5	1.1	4.9	4.4
20 to 29	21.8	43.6	35.3	27	28.5	29.5
30 to 39	23.73	20.7	23.6	26.1	22.4	23.5
40 to 49	17.36	11.6	12.4	16.3	13	12.5
50 to 59	17.1	11.9	13.1	14.3	12.7	11.1
60 and above	17.4	7.4	12.1	15.2	18.5	19
OCCUPATION	100%	100%	100%	100%	100%	100%
Government	17.54	13.1	10	10.4	10.1	13
Private company	30.43	35.5	37.2	32.2	35	33.2
Student	10.28	23.6	19.2	19.1	13.8	14.2
Housewife	4.3	1.4	2.1	1	3	3
Retired	16.56	5.1	8.1	13.8	13.1	13.9
Self-employed	15.93	7.3	8.4	9.9	8.6	9.2
Others	4.96	13.9	15	13.6	16.4	13.5
PURPOSE OF VISIT	100%	100%	100%	100%	100%	100%
Business	2.66	7	4.6	3.5	8.8	12.4
Holiday	74.9	83.6	89.6	91.1	80.3	76.8
Visit family	9.4	5.5	2.1	1.4	4.2	5.1
Official, convention and seminar	4.83	1.7	1.6	2.4	2.2	2.1
Education						1.6
En Route / In transit						0.3
Others	8.21	2.1	2.1	1.6	4.5	1.7
TYPE OF ACCOMMODATION	%	%	%	%	%	%
Hotel	58.86	54.5	62.5	66.7	61.3	60.8
Guest House	34.08	42.5	42.4	41.3	39.9	39.4
Home Stay						4
Private house	3.3	1.5	5.5	3.9	7.9	5.9
Others	3.76	1.6	2.8	2.6	5.4	4.6
PERSONS ACCOMPANIED WITH	100%	100%	100%	100%	100%	100%
Alone	12.87	26.2	24.2	13.8	20.9	25.8
Spouse/partner	32.58	32.2	42	42.3	35.9	37.9
Child	7.7	3.2	5	11.4	7.6	6.6
Colleague	38.6	2.8	2.1	3.8	4.1	4.9
Friend	6.8	32.4	25.3	29.4	25.7	22.6
Others	1.45	3.2	7.9	4.2	5.8	5.1
TYPE OF TRANSPORTATION IN LAO PDR	%	%	%	%	%	%
Airplane						51.4
Bus						43.9
Boat						23.4
Tuk-Tuk						45.5
Taxi						26.4
Car						24.4
Bicycle						16.6
Others						13.4

Continue

CHARACTERISTIC	2011	2012	2013	2014	2015	2016	2017
FREQUENCY OF VISIT	100%	100%	100%	100%	100%	100%	100%
None	38.3	25.8	41.1	36.7	4	0.1	0.2
First visit	43.8	53.7	40.3	45.7	79.9	78.2	72.8
Second visit	8.2	12.3	6.8	6.8	8.2	10.6	11.1
Third visit	9.7	8.2	11.8	10.8	7.9	2.7	7.7
More than 3						8.4	8.2
SOURCE OF INFORMATION ABOUT LAOS	%	%	%	%	%	%	%
Book or magazine	32.1	30.8	41.1	34	13.8	16.2	17.7
TV or radio	4.7	2.7	4.9	22	12	5.6	5.1
Friend	58.3	45.9	26.3	25.8	23.8	28	23.1
Travel Agency/Tour Operator	11.4	8.3	16.2	17.9	16.5	16.3	17.2
Internet	54.3	32.7	30.6	30	63.4	63.8	34
Guide Book	21	24	32	23	30	22	11.7
Facebook							14.8
Other	14.3	14.1	5.6	4.3	7.5	9.3	7.1
MAIN INTERESTS	%	%	%	%	%	%	%
Nature	66	53.3	70.4	69.2	66.8	66.9	65.5
Historical Tourism							30.3
Culture	74.4	52	79.4	74.2	74	70.1	67.5
Heritage Tourism							17.8
Community Base Tourism							6.6
Eco-Tourism							10.8
Ethnic Group							10.5
Adventure							11.5
Agri-Tourism							4
Temple and monuments	65.3	41.7	61.7	62.3	69.2	62	44.1
Minority people	28.7	20.4	26.3	24.6	33.9	28.7	5.8
Food	27	22.9	37.4	36.5	48.7	36.4	33.2
Shopping	21.8	9.6	17.3	14.9	15.3	14.2	15.2
New destination	34.9	23.5	39.8	42	34.5	36.2	22.4
Other	14.6	5.5	9.8	13	13.5	12.4	9.5
PROVINCES VISITED	%	%	%	%	%	%	%
Attapeu	1	1	1.2	1.3	1.7	0.3	0.9
Bokeo	26	23.8	23	21.2	17.5	6	5.9
Bolikhamxay	15.9	14.2	13.1	11	9.7	1.2	2.1
Champassak	49.8	46	52.8	56.2	58	5.7	9.8
Huapanh	5.4	5.2	4.5	3.8	3.5	0.9	1.9
Khammouane	22.4	21.1	19.2	18.5	17.4	1.5	2.1
Luang Namtha	20.9	18.2	19.7	18.2	14.8	3	3.4
Luang Prabang	65.3	61	78.9	81	82.8	73.6	80.4
Oudomsay	5	4.4	3.6	3.1	3.6	3.5	3.2
Phong Saly	4.8	4.1	3.9	3.3	3	2	1.6
Saravanh	3.4	3.1	2.5	2.2	2.7	0.5	0.8
Savannakhet	8.7	6.2	9.4	8.4	9.1	4.4	4
Sekong	1	1	2.4	1.4	1.1	1.1	1.7
Vientiane Capital	67.2	53	78.5	72.9	75.9	77.3	58.2
Vientiane Province	36.1	31.1	39.4	36.9	33.1	42.5	30.1
Xaisomboun	0	0	0	1.3	0	1.2	1.8
Xaiyabouli	4.5	4.1	5.2	6	5.2	1	1.9
Xieng Khouang	25.9	22.4	20	16	10.5	7.1	5.8
COUNTRIES VISITED ON THESE TRIPS	%	%	%	%	%	%	%
Only Lao PDR	25.7	29.6	22.6	24.2	37.4	34.5	25.6
Thailand	76.2	43.2	60.1	52.2	52.5	56.1	49.9
Cambodia or China or Vietnam	47.5	36.7	52.6	54.7	62	41.4	42.4
Other Southeast Asian countries	40.1	31.1	17.7	17.6	16	20.5	23.6
None of above							3.4
SATISFACTION OF YOUR VISIT COMPARED WITH YOUR EXPECTATION	100%	100%	100%	100%	100%	100%	100%
Much higher							29.4
Higher							39.2
Same							25.1
Lower							4.8
Much lower							1.5
AVERAGE LENGTH OF STAY (DAYS)	7	7.2	8.4	7.9	7.5	7.57	8.39
AVERAGE EXPENDITURE PER DAY PER PERSON (US Dollars)	72	81	69.5	73.3	76.5	76.8	76.6

Part III: Tourism Projections

Table 21: Tourist Arrivals to Laos, Revenue from Tourism, Average Length of Stay by Time Trend from 1993-2025

Year	Number of Tourist Arrivals	Revenue from Tourism (Dollars)	Average Length of Stay (Days) for international tourists	Remark
1993	102,946	6,280,000	3.5	
1994	146,155	7,557,600	5.1	
1995	346,460	24,738,480	4.3	
1996	403,000	43,592,263	4.1	
1997	463,200	73,276,904	5.0	
1998	500,200	79,960,145	5.0	
1999	614,278	97,265,324	5.5	
2000	737,208	113,898,285	5.5	
2001	673,823	103,786,323	8.0	
2002	735,662	113,409,883	6.5	
2003	636,361	87,302,412	6.0	
2004	894,806	118,947,707	6.5	
2005	1,095,315	146,770,074	7.0	
2006	1,215,106	173,249,896	7.0	
2007	1,623,943	233,304,695	7.0	
2008	1,736,787	275,515,758	6.5	
2009	2,008,363	267,700,224	7.0	
2010	2,513,028	381,669,031	7.0	
2011	2,723,564	406,184,338	7.0	
2012	3,330,072	506,022,586	7.2	
2013	3,779,490	595,909,127	8.4	
2014	4,158,719	641,636,543	7.9	
2015	4,684,429	725,365,681	7.5	
2016	4,239,047	724,191,957	7.57	
2017	3,868,838	648,067,008	8.39	
2018	4,929,858	820,999,343	8.4	Estimated
2019	5,220,782	876,382,689	8.6	Estimated
2020	5,511,705	931,766,034	8.7	Estimated
2021	5,802,628	987,149,380	8.9	Estimated
2025	6,966,322	1,208,682,762	9.4	Estimated

Table 22: Tourist Arrivals Forecast by Season from 2018 to 2025

Year	Jan	Feb	Mar	Apr	May	Jun	Jul	Aug	Sep	Oct	Nov	Dec	Total
2005	77,093	81,766	113,722	100,477	83,665	96,140	67,878	85,940	77,694	99,437	100,217	111,286	1,095,315
2006	111,917	112,520	104,675	99,928	94,017	85,016	79,525	93,045	86,762	108,720	111,747	127,234	1,215,106
2007	150,853	140,238	137,463	117,805	141,771	117,741	121,541	127,687	126,071	152,366	139,478	150,929	1,623,943
2008	158,776	149,744	140,256	142,321	150,314	149,299	133,355	122,636	128,427	134,943	158,673	168,043	1,736,787
2009	186,668	176,596	154,059	101,288	117,754	140,929	161,055	156,239	178,194	191,697	190,132	253,752	2,008,363
2010	229,032	196,746	210,337	224,753	179,168	140,929	182,876	201,273	195,318	220,925	237,692	265,613	2,484,662
2011	265,367	237,554	257,454	221,854	266,080	237,153	244,181	219,440	209,259	182,671	192,683	189,868	2,723,564
2012	298,227	283,945	285,583	314,494	287,100	267,306	213,953	238,725	228,186	275,948	347,212	289,393	3,330,072
2013	345,411	350,459	308,847	331,717	297,038	273,152	297,439	308,065	280,235	326,579	331,823	328,725	3,779,490
2014	367,980	384,664	360,675	366,610	339,580	232,400	316,631	304,725	368,666	382,064	365,824	368,900	4,158,719
2015	436,358	426,697	421,841	416,628	325,095	298,970	337,805	358,358	461,921	400,054	420,650	380,052	4,684,429
2016	400,140	450,902	396,975	363,538	343,162	296,272	296,242	323,603	302,981	336,863	367,964	360,405	4,239,047
2017	339,764	350,380	355,217	346,559	314,344	298,306	278,971	280,983	262,464	325,574	358,997	357,280	3,868,838
2018	446,892	478,933	453,033	451,863	395,107	341,513	350,602	366,529	385,181	412,281	440,955	406,970	4,929,858
2019	472,516	511,210	482,506	482,515	419,254	361,251	368,964	386,693	406,945	436,018	466,635	426,276	5,220,782
2020	498,140	543,487	511,980	513,167	443,402	380,988	387,325	406,856	428,710	459,754	492,316	445,581	5,511,705
2021	523,764	575,764	541,453	543,818	467,549	400,726	405,686	427,019	450,474	483,491	517,996	464,887	5,802,628
2025	626,260	704,871	659,347	666,425	564,139	479,677	479,132	507,673	537,532	578,438	620,717	542,109	6,966,322

Table 23: Number of Lao Travel Agents from 2011-2017

Province	Number of Travel Agents							Number of Branch Travel Agents						
	2011	2012	2013	2014	2015	2016	2017	2011	2012	2013	2014	2015	2016	2017
Total	236	275	290	342	368	381	422	74	75	75	68	55	51	45
Attapeu	3	3	3	3	2	3	3	0	0	0	1	0	0	0
Bokeo	12	14	15	15	17	16	17	3	4	4	1	3	1	1
Bolikhamxay	2	2	2	2	1	2	4	0	0	0	5	0	0	0
Champasack	23	22	24	28	29	27	30	16	12	14	0	10	7	7
Houaphanh	2	2	2	2	1	1	2	0	0	0	0	0	0	0
Khammouane	6	4	4	4	3	3	5	2	4	4	4	1	2	2
Luang Namtha	3	5	5	5	5	6	7	3	3	3	28	1	1	1
Luang Prabang	35	39	42	49	57	61	67	25	27	25	0	24	23	20
Oudomxay	2	3	3	3	4	3	3	0	0	0	2	0	0	0
Phongsaly	0	0	0	0	0	0	1	1	1	1	9	1	1	1
Saravane	1	1	1	3	3	0	2	1	1	1	0	0	0	0
Savannakhet	11	12	12	12	10	10	11	4	4	4	4	0	0	0
Sekong	1	2	2	2	0	0	0	0	0	0	10	0	0	0
Vientiane Capital	127	157	162	197	216	218	238	9	9	9	0	9	9	8
Vientiane Province	2	4	6	6	9	17	18	2	2	2	0	2	2	2
Xaisomboun	0	0	0	0	0	0	0	0	0	0	0	0	0	0
Xaiyabouli	5	4	4	5	5	7	8	0	0	0	4	0	0	0
Xieng Khouang	1	1	3	6	6	7	6	8	8	8	0	4	5	3

Table 24: Number of Tourist Sites in Laos in 2017

Province	Natural sites	Cultural sites	Historical sites	Garand Total
Total	1184	632	278	2094
Attapeu	31	18	10	59
Bokeo	71	22	6	99
Bolikhamxay	89	12	3	104
Champasak	116	60	40	216
Houaphanh	51	66	35	152
Khammouane	139	29	29	197
Luang Namtha	53	56	14	123
Luang Prabang	108	86	34	228
Oudomxay	54	40	12	106
Phongsaly	27	74	4	105
Saravanh	52	37	6	95
Savannakhet	74	29	13	116
Sekong	20	6	9	35
Vientiane Capital	13	10	14	37
Vientiane Province	133	15	5	153
Xaisomboun	37	4	9	50
Xaiyabouli	29	12	6	47
Xieng Khouang	87	56	29	172

**Table 25: International visitor arrivals by mode of transport
And purpose of visit, 2014-2017**

Year	2014	2015	2016	2017
Grand Total	4,158,719	4,684,429	4,239,047	3,868,838
By mode of transport				
By air	499,690	520,523	578,925	520,176
By land	3,659,029	4,163,906	3,660,122	3,348,662
By purpose of visit				
Business	191,301	163,955	373,036	479,735
Holiday	3,726,212	4,267,515	3,403,955	2,816,509
Visit	87,333	65,582	178,039	352,064
Official, Convention	66,540	112,426	93,259	81,245
Education				61,902
En Route/ In transit				11,606
Others	87,333	74,951	190,758	65,777

Table 26: Revenue from Tourism and Major Exports, 2013-2017

Note: Revenue in Millions of US Dollars

Product	2017		2016		2015		2014		2013	
	Revenue	Rank	Revenue	Rank	Revenue	Rank	Revenue	Rank	Revenue	Rank
Tourism	648.0	4	724.1	4	725.3	3	641.6	2	595.9	2
Garments	182.3	6	88.8	6	199.3	6	219.5	6	232.7	5
Electricity	1,280.3	3	940.7	3	495.5	4	586.1	3	592.3	3
Wood Products	48.6	8	39.0	7	144.6	7	159.9	7	83.5	7
Coffee	105.1	7	59.9	8	54.7	8	48.4	8	79.7	8
Agricultural Products	582.5	5	584.2	5	319.8	5	238.2	4	290.1	4
Minerals	1,390.5	1	1,314.0	1	1,292.4	1	1,325.2	1	1,982.0	1
Handicrafts	3.20	9	0.97	9	2.1	9	5.3	9	0.94	9
Other Industries	1,295.0	2	1,312.1	2	917.2	2	237.6	5	133.0	6

Source: Ministry of Industry and Commerce.

Ministry of Information, Culture and Tourism Tourism Development Department

Head Office:

P.O. Box: 3556
Lane Xang Avenue
Vientiane, Lao PDR
Tel: (856 21) 212 251, 212 769, 217910, 252961.
Fax: (856 21) 217910.

Website:

<http://www.tourismlaos.org>
<http://www.ecotourismlaos.com>
<http://www.laotourismdevelopment.com>

Provincial Offices: Country code: 856.

Attapeu	Tel: (036) 211 056	Fax: (036) 211 014
Bokeo	Tel: (084) 211 162	Fax: (084) 211 162
Bolikhamxay	Tel: (054) 212 667	Fax: (054) 212 667
Champasack	Tel: (031) 212 021	Fax: (031) 212 021
Houaphanh	Tel: (064) 312 567	Fax: (064) 312 567
Khammouane	Tel: (051) 212 512	Fax: (051) 212 512
Luang Namtha	Tel: (086) 312 047	Fax: (086) 312 047
Luang Prabang	Tel: (071) 212 487	Fax: (071) 252 904
Oudomxay	Tel: (081) 211 797	Fax: (081) 212 482
Phongsaly	Tel: (088) 210 098	Fax: (088) 210 098
Saravanh	Tel: (034) 211 528	Fax: (034) 211 528
Savannakhet	Tel: (041) 212 755	Fax: (041) 212 755
Sekong	Tel: (038) 211 361	Fax: (038) 211 013
Vientiane Capital	Tel: (021) 222 971	Fax: (021) 212 926
Vientiane Province	Tel: (023) 211 629	Fax: (023) 211 629
Xaisomboun	Tel: (026) 210 030	Fax: (026) 210 030
Xaiyabouli	Tel: (030) 5180095	Fax: (074) 211 183
Xieng Khouang	Tel: (061) 312 217	Fax: (061) 312 217

Advisors:

Dr. Aloun BOUNMIXAY	Director General of Tourism Development Department
Mr. Thavipheth OULA	Deputy Director General of Tourism Development Department
Mrs. Phonemaly INTHAPHOM	Deputy Director General of Tourism Development Department

Editors:

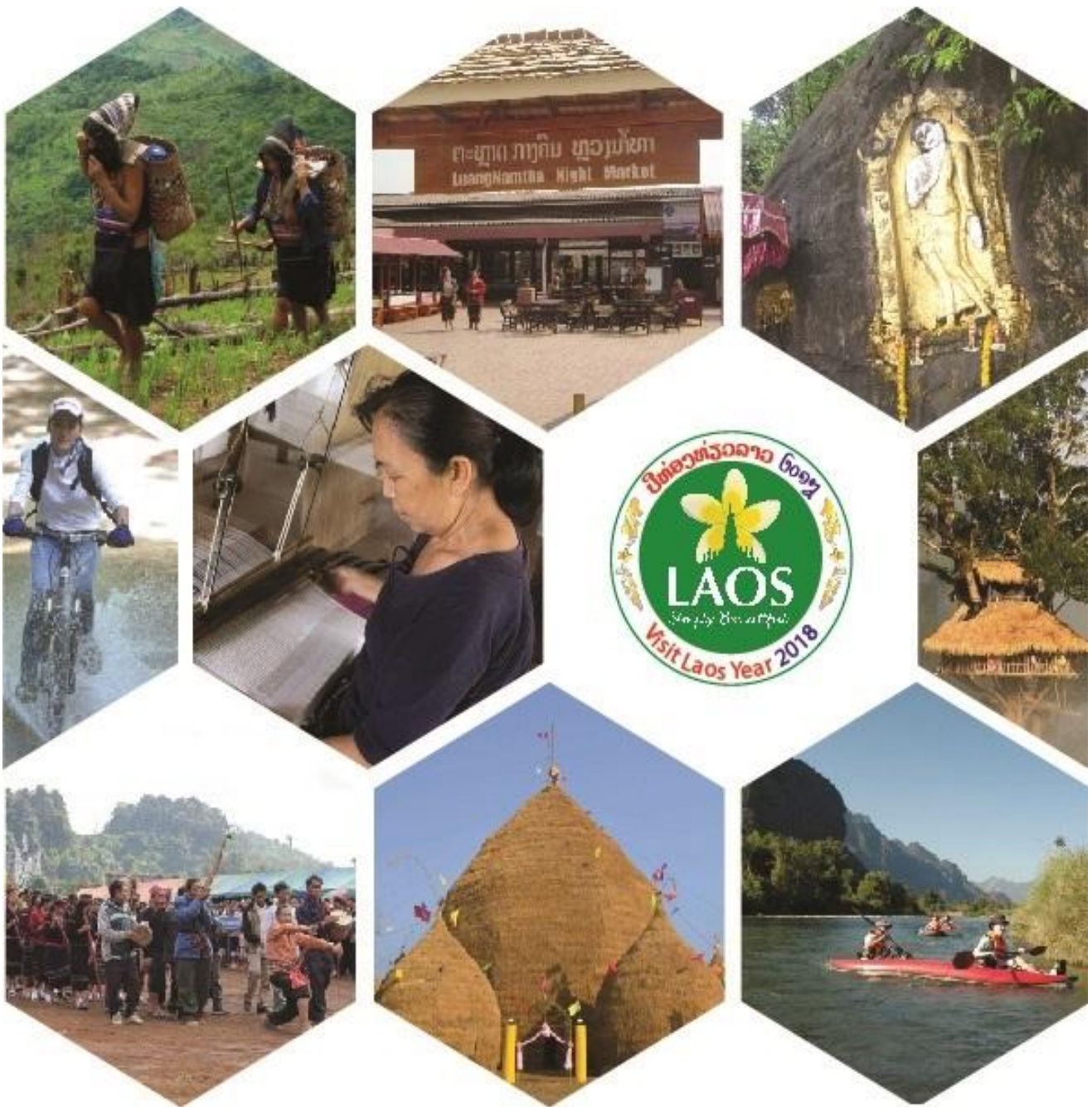
Mr. Sophab SOMSOUK	Director Tourism Research & Administrative Division
Mr. Bounthavy SISAVA	Deputy Director Tourism Research & Administrative Division
Mr. Xaynalong BOUNTA	Deputy Director Tourism Research & Administrative Division

Assistants:

Mr. Vongphet XAYYALATH	Technical Tourism Research & Administrative Division
Mr. Daochan SINGKHAMYONG	Technical Tourism Research & Administrative Division
Ms. Ketmanyvone BUAKHAMSITH	Technical Tourism Research & Administrative Division
Mr. Souphalak MATHMANIVONG	Technical Tourism Research & Administrative Division

Provincial Coordinators:

Ms. Vatsana BONGKHAMTAN	Attapeu	Provincial Information, Cultural and Tourism Department
Mr. Soulisit SOMSY	Bokeo	Provincial Information, Cultural and Tourism Department
Mr. Bounkham PHOMNOUIN	Bolikhamxay	Provincial Information, Cultural and Tourism Department
Mr. Sonepasert SOUKKASERM	Champassak	Provincial Information, Cultural and Tourism Department
Ms. Melavanh CHIENGTHEVA	Huaphanh	Provincial Information, Cultural and Tourism Department
Ms. Bounthavay DAMLUESA	Khammouane	Provincial Information, Cultural and Tourism Department
Mr. Linthon SOUVANTHONG	Luangnumtha	Provincial Information, Cultural and Tourism Department
Mr. Vanphaeng ITYHIPHON	Luangprabang	Provincial Information, Cultural and Tourism Department
Ms. Davone KHAMSAVAT	Oudomxay	Provincial Information, Cultural and Tourism Department
Mr. Sombat CHANTHALUNGSY	Phongsaly	Provincial Information, Cultural and Tourism Department
Ms. Souchinda CHAMPAKHAM	Saravanh	Provincial Information, Cultural and Tourism Department
Mr. Chanthanchak KITTAVONG	Savannaket	Provincial Information, Cultural and Tourism Department
Mr. Khanpheng SIPASERT	Sekong	Provincial Information, Cultural and Tourism Department
Ms. Putmany KOEVITHONE	Vientiane Capital	Provincial Information, Cultural and Tourism Department
Ms. Tatsaly MILATTANAPHENG	Vientiane Province	Provincial Information, Cultural and Tourism Department
Mr. Khamphan AOUTHSIBOUNMY	Xaisomboun	Provincial Information, Cultural and Tourism Department
Ms. Vilaiphone CHANDA	Xaiyabuli	Provincial Information, Cultural and Tourism Department
Mr. Souksavanh VONGMACHANH	Xiengkhoung	Provincial Information, Cultural and Tourism Department



Ministry Of Information, Culture and Tourism
Tourism Development Department
Tourism Research Division